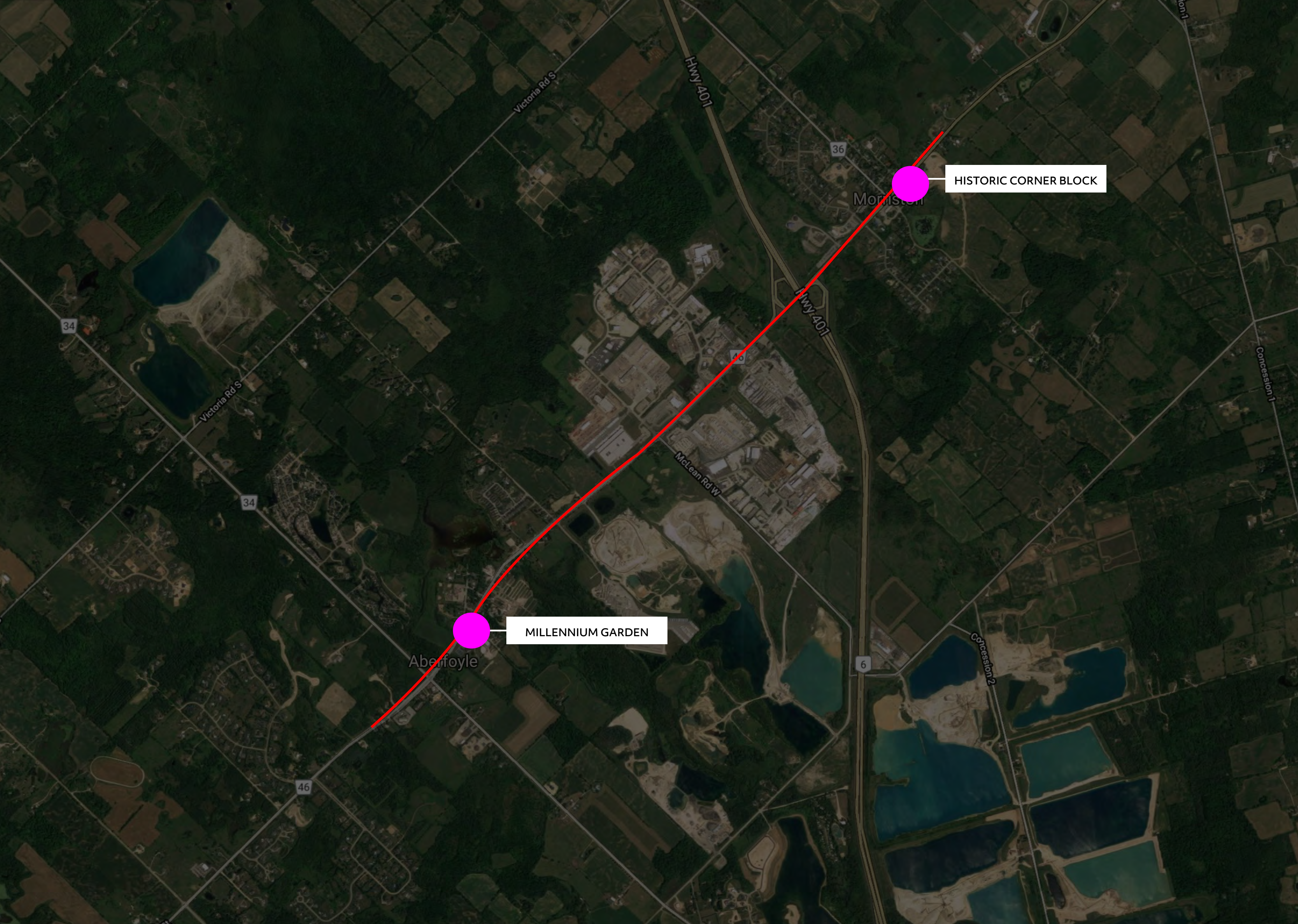






Township of Puslinch Experience Signage

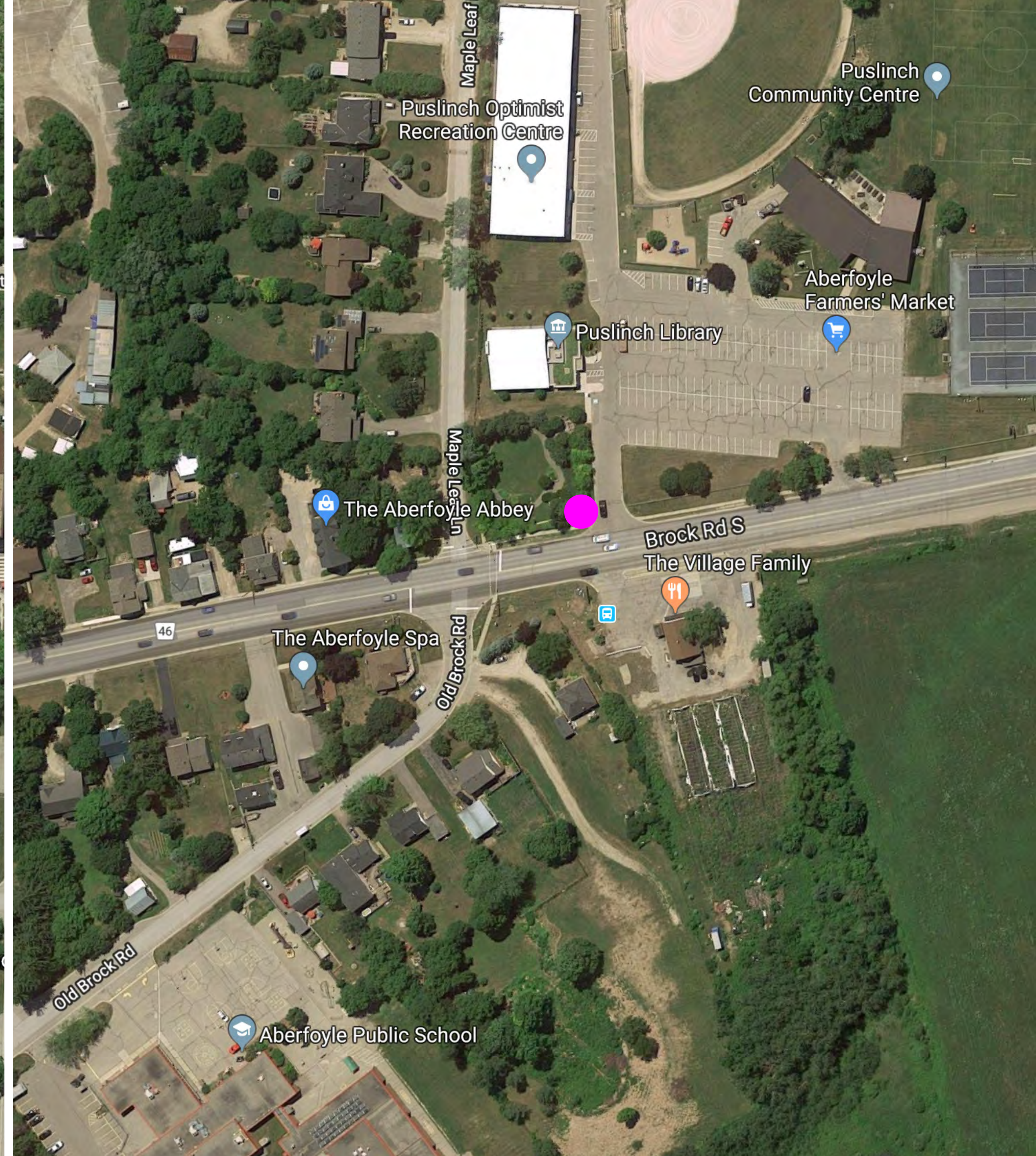
Aubs&Mugg

Millennium Garden & Historic Corner Block

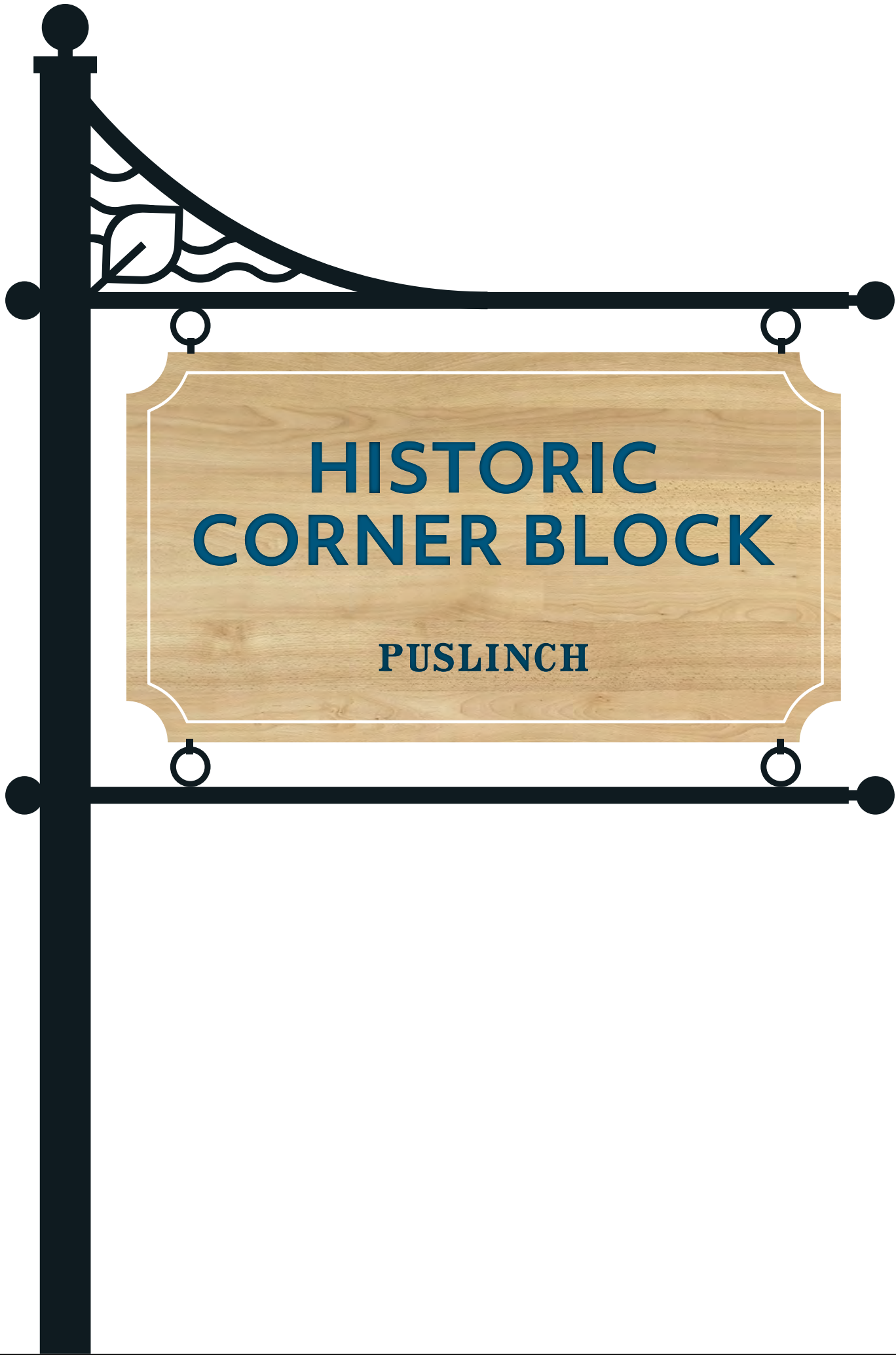
Aubs&Mugg



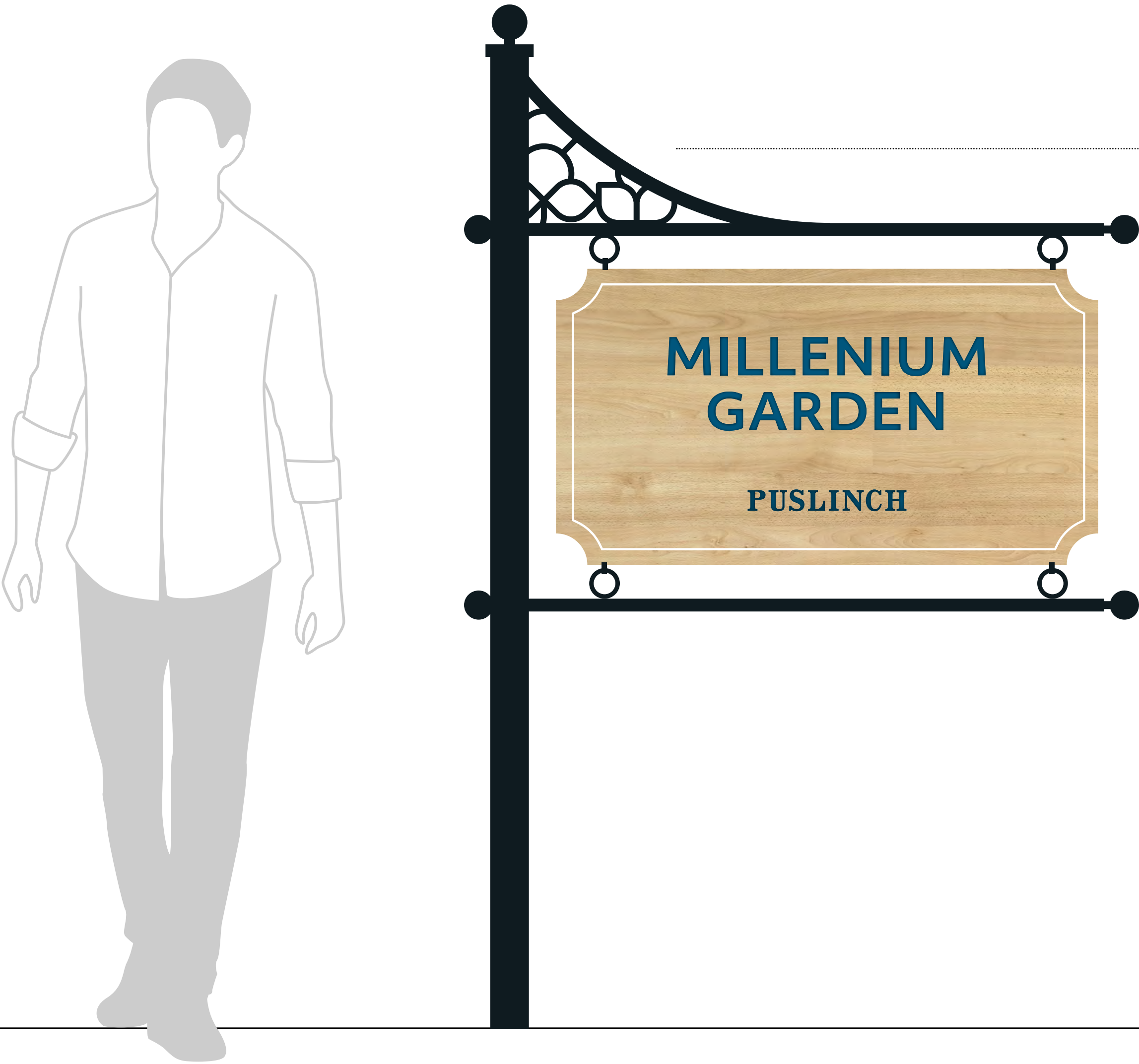
-  ACTIONABLE AREA
-  JOURNEY ENTRANCES
-  BANNER LOCATION
-  SIGN LOCATION











NEW LOGO DETAIL



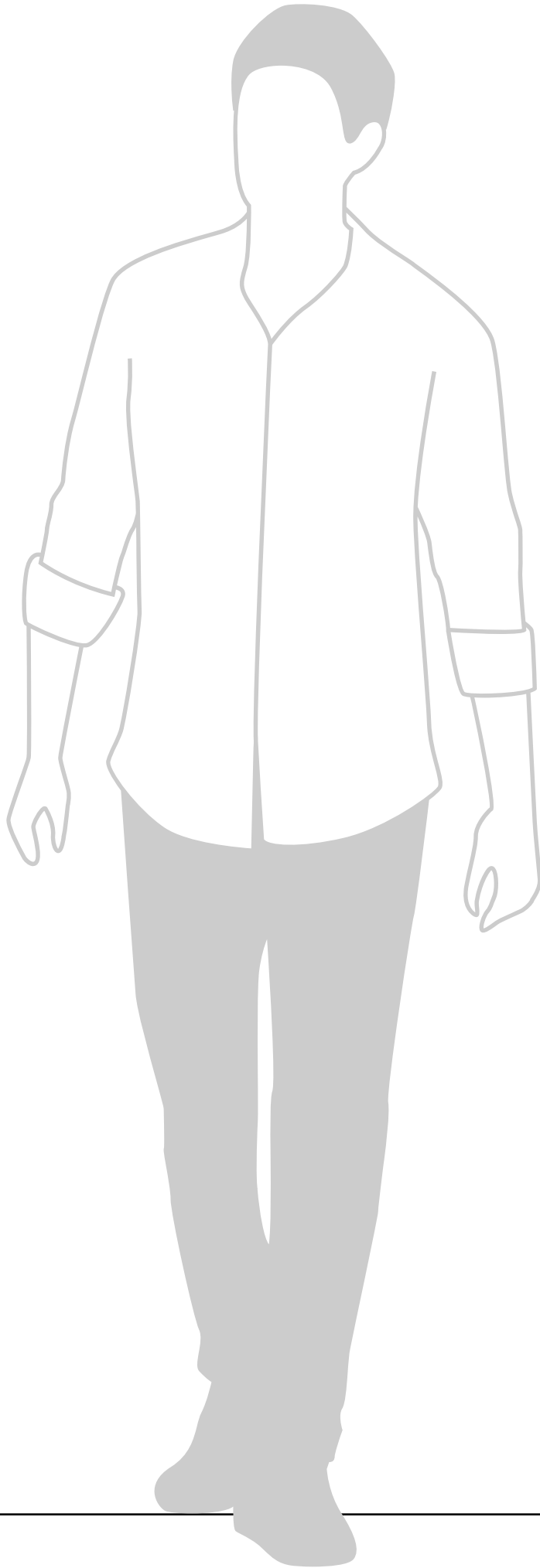
**HISTORIC
CORNER BLOCK**

PUSLINCH



Fox Run Trail

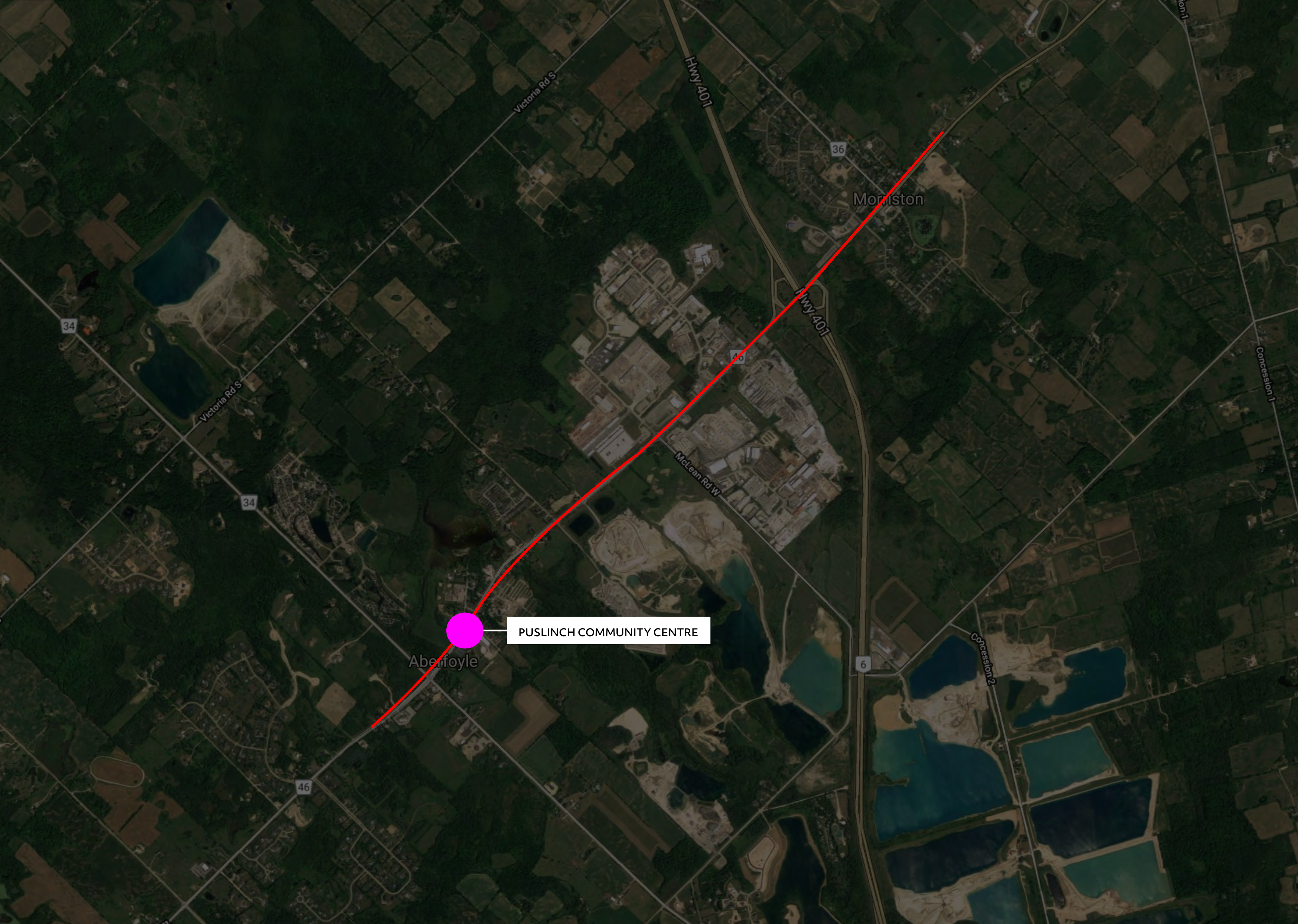
Aubs&Mugg







PRINTED SURFACE

Puslinch Community Centre

Aubs&Mugg



-  ACTIONABLE AREA
-  JOURNEY ENTRANCES
-  BANNER LOCATION
-  SIGN LOCATION



Aberfoyle
Antique Market

Puslinch Optimist
Recreation Centre

Puslinch
Community Centre

Aberfoyle
Farmers' Market

Puslinch Library

The Aberfoyle Abbey

Brock Rd S
The Village Family

The Aberfoyle Spa

Aberfoyle
Snomobiles Limited

Aberfoyle Public School





MILLENNIUM
GARDEN
PARK



MILLENNIUM
GARDEN
PARKING

FENCE REMAINS FOR COMMUNITY PARTNER SIGNS

COMMUNITY CENTRE GROUNDS

NOTE: NAMING IS TBD



LOGO DETAIL

BLACKENED STEEL

RAISED LETTERING

Inspired by
carpentry details

BASE MATERIAL
TBD WITH
FABRICATOR



MILLENNIUM
GARDEN
PARKWAY





PUSLINCH
COMMUNITY
CENTRE
GROUNDS

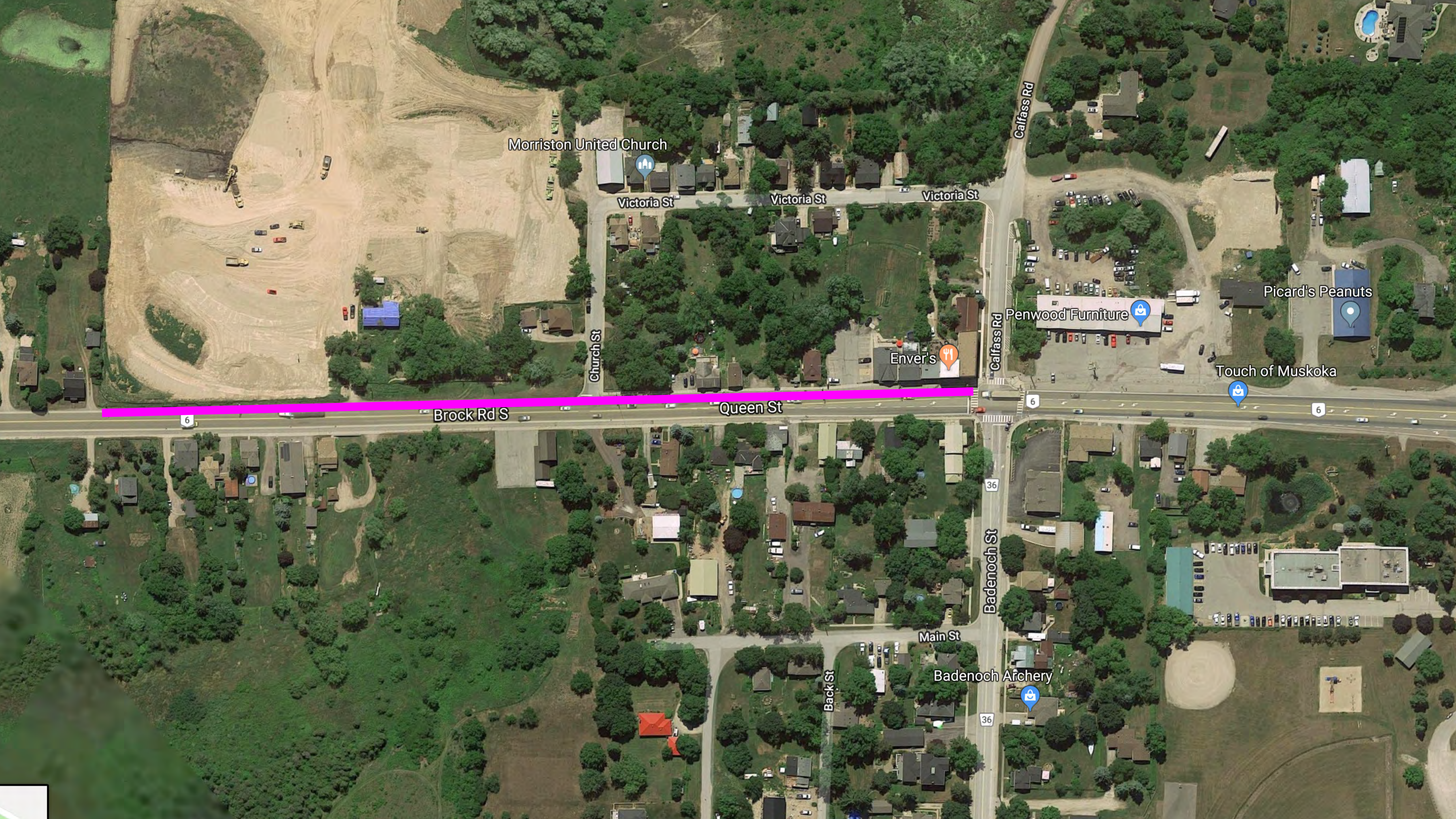
Gateway Banners

Aubs&Mugg

Approach



-  ACTIONABLE AREA
-  JOURNEY ENTRANCES
-  BANNER LOCATION
-  SIGN LOCATION



Morriston United Church

Victoria St

Victoria St

Victoria St

Church St

Calfass Rd

Enver's

Penwood Furniture

Picard's Peanuts

Touch of Muskoka

Brock Rd S

Queen St

Badenoch St

Main St

Badenoch Archery

Back St











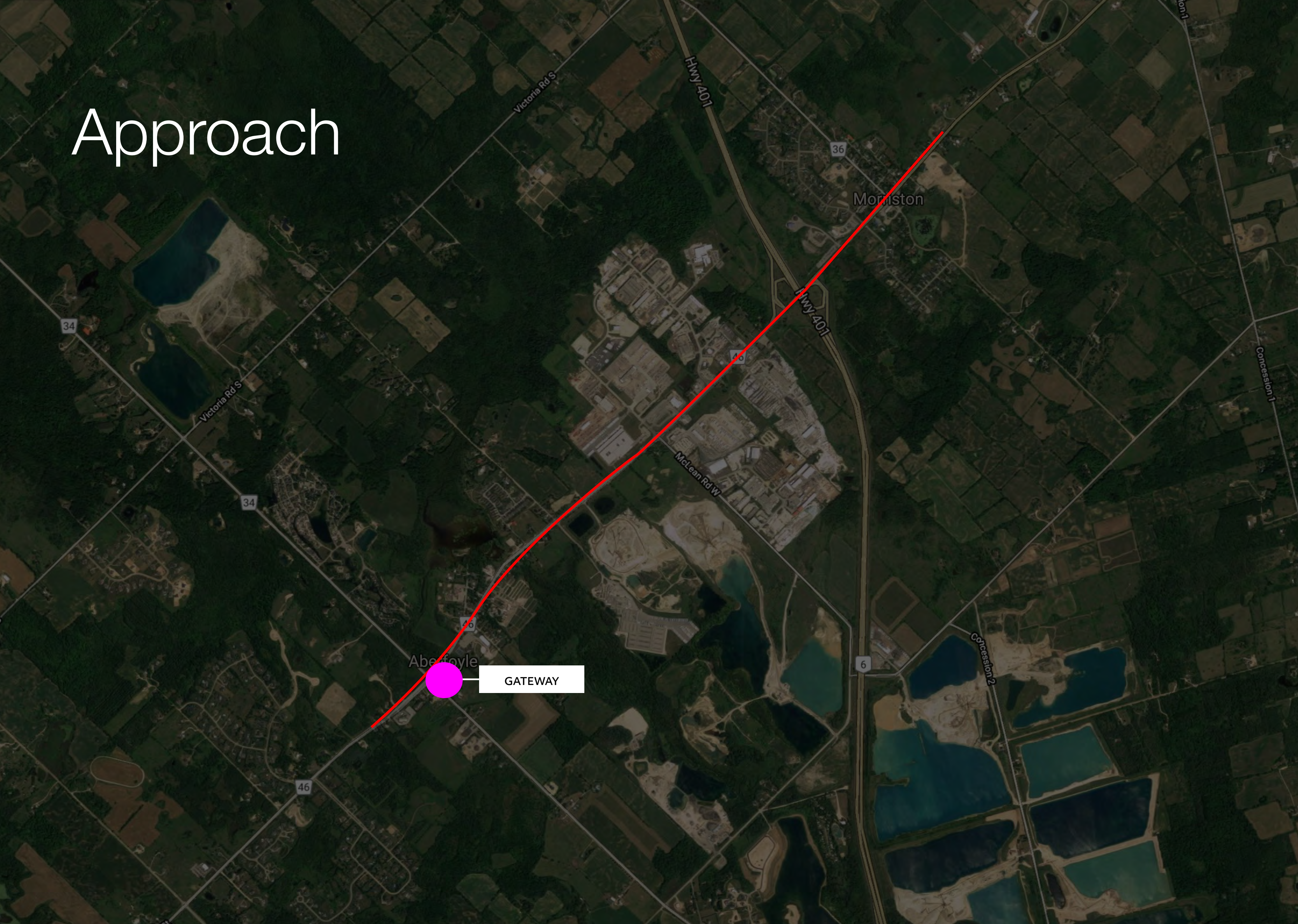
HISTORIC
CORNER BLOCK
PUSLINCH







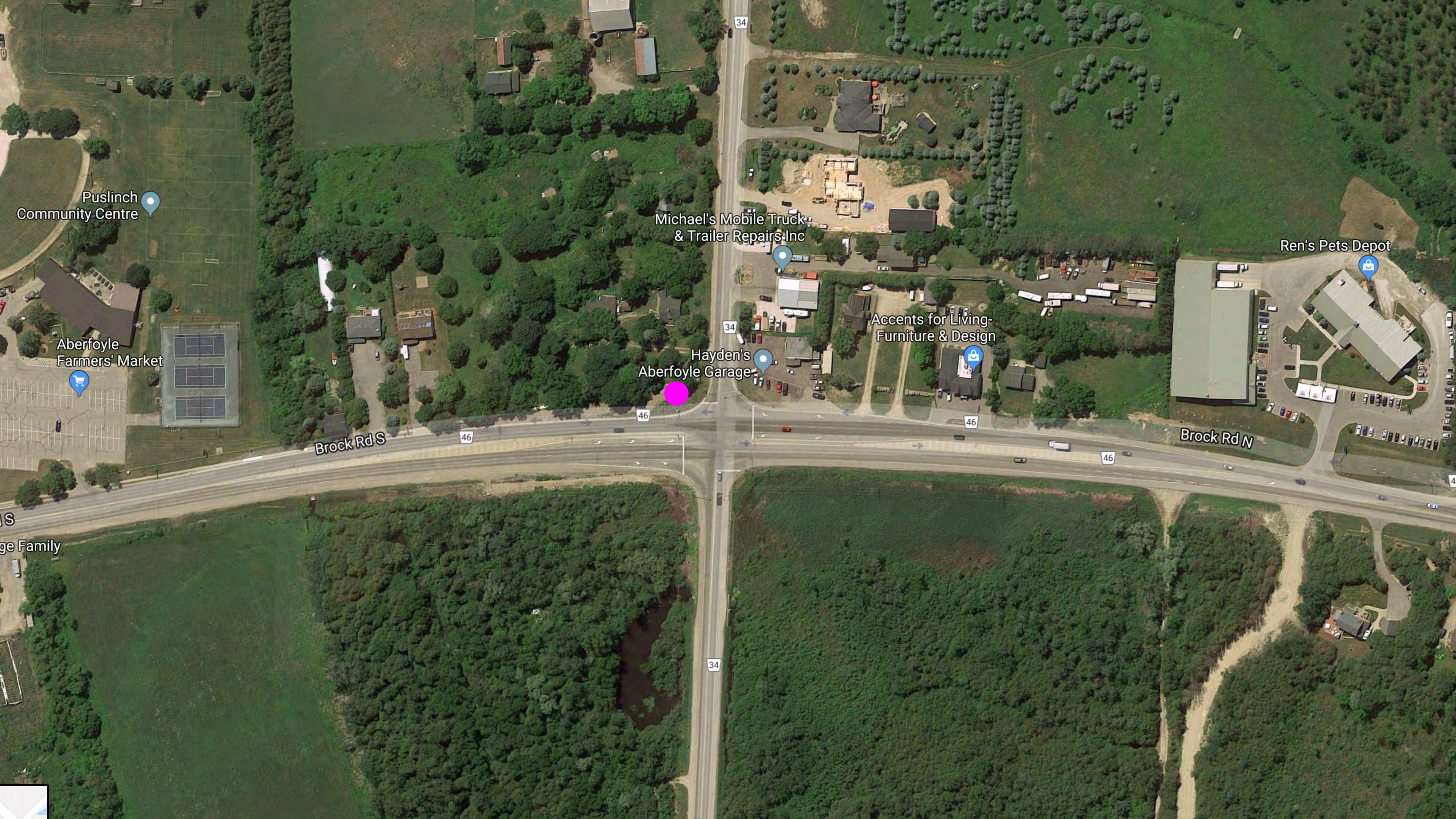
Gateway Sign

Aubs&Mugg

Approach



-  ACTIONABLE AREA
-  JOURNEY ENTRANCES
-  BANNER LOCATION
-  SIGN LOCATION



Puslinch
Community Centre

Aberfoyle
Farmers' Market

Michael's Mobile Truck
& Trailer Repairs Inc

Hayden's
Aberfoyle Garage

Accents for Living
Furniture & Design

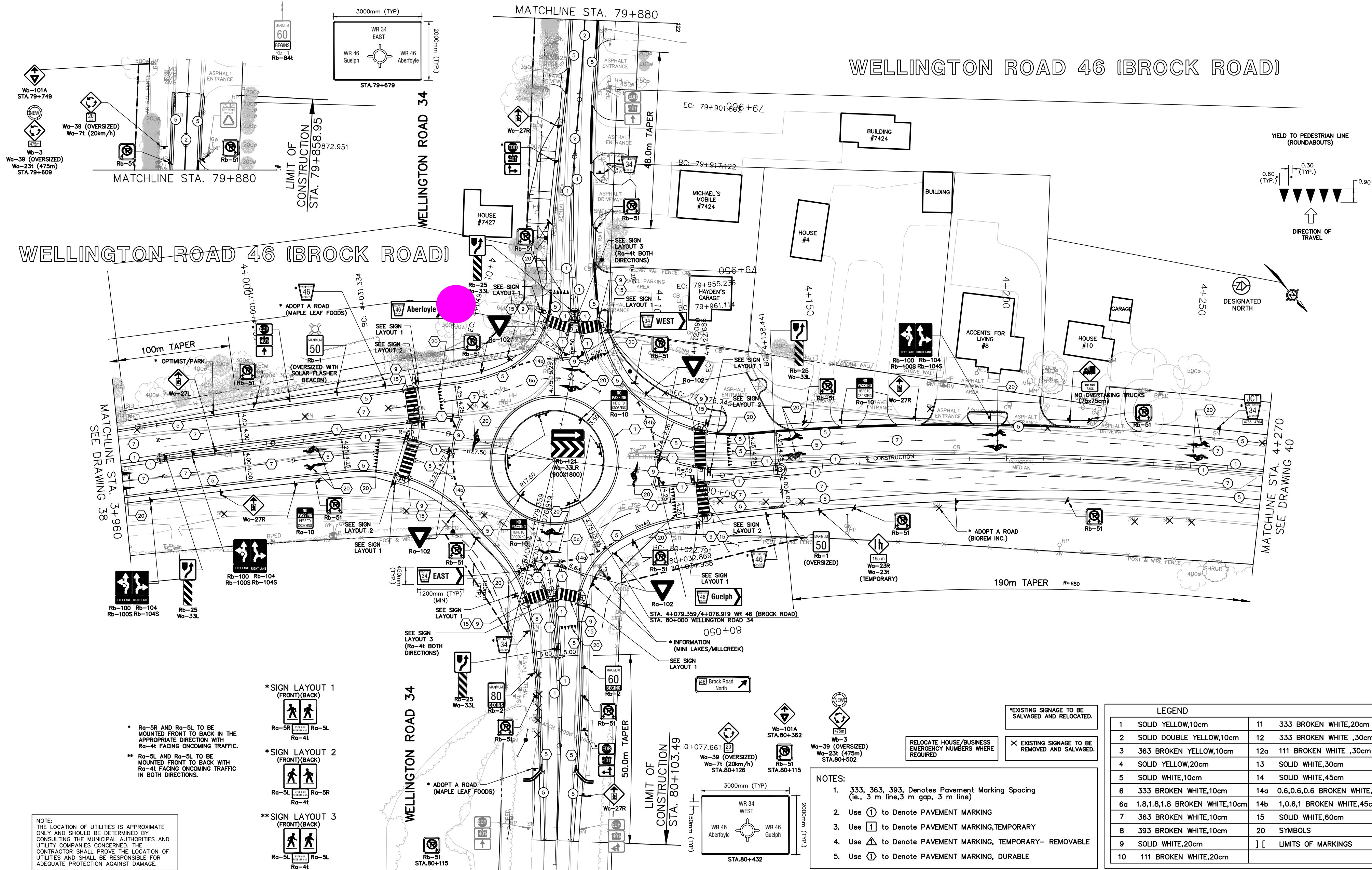
Ren's Pets Depot

Brock Rd S

Brock Rd N

S
ge Family





NOTE:
THE LOCATION OF UTILITIES IS APPROXIMATE ONLY AND SHOULD BE DETERMINED BY CONSULTING THE MUNICIPAL AUTHORITIES AND UTILITY COMPANIES CONCERNED. THE CONTRACTOR SHALL PROVE THE LOCATION OF UTILITIES AND SHALL BE RESPONSIBLE FOR ADEQUATE PROTECTION AGAINST DAMAGE.

- * Ra-5R AND Ra-5L TO BE MOUNTED FRONT TO BACK IN THE APPROPRIATE DIRECTION WITH Ra-4t FACING ONCOMING TRAFFIC.
- ** Ra-5L AND Ra-5R TO BE MOUNTED FRONT TO BACK WITH Ra-4t FACING ONCOMING TRAFFIC IN BOTH DIRECTIONS.

* SIGN LAYOUT 1 (FRONT)(BACK)



* SIGN LAYOUT 2 (FRONT)(BACK)



** SIGN LAYOUT 3 (FRONT)(BACK)



NOTES:

- 333, 363, 393, Denotes Pavement Marking Spacing (ie., 3 m line, 3 m gap, 3 m line)
- Use ① to Denote PAVEMENT MARKING
- Use ① to Denote PAVEMENT MARKING, TEMPORARY
- Use ① to Denote PAVEMENT MARKING, TEMPORARY- REMOVABLE
- Use ① to Denote PAVEMENT MARKING, DURABLE

*EXISTING SIGNAGE TO BE SALVAGED AND RELOCATED.

RELOCATE HOUSE/BUSINESS EMERGENCY NUMBERS WHERE REQUIRED

× EXISTING SIGNAGE TO BE REMOVED AND SALVAGED.

LEGEND

1	SOLID YELLOW,10cm	11	333 BROKEN WHITE,20cm
2	SOLID DOUBLE YELLOW,10cm	12	333 BROKEN WHITE ,30cm
3	363 BROKEN YELLOW,10cm	12a	111 BROKEN WHITE ,30cm
4	SOLID YELLOW,20cm	13	SOLID WHITE,30cm
5	SOLID WHITE,10cm	14	SOLID WHITE,45cm
6	333 BROKEN WHITE,10cm	14a	0.6,0.6,0.6 BROKEN WHITE,45cm
6a	1.8,1.8,1.8 BROKEN WHITE,10cm	14b	1.0,6.1 BROKEN WHITE,45cm
7	363 BROKEN WHITE,10cm	15	SOLID WHITE,60cm
8	393 BROKEN WHITE,10cm	20	SYMBOLS
9	SOLID WHITE,20cm]	[LIMITS OF MARKINGS
10	111 BROKEN WHITE,20cm		

NOTES

No	DATE	REVISION	INITIAL
03	MAY 2019	ISSUED FOR CONSTRUCTION	H.W.W.
02	MAR 2019	ISSUED FOR TENDER	H.W.W.
01	SEPT 2018	ISSUED FOR REVIEW	H.W.W.



RECONSTRUCTION OF
WELLINGTON ROAD 46
FROM
NORTH OF MCLEAN ROAD TO NORTH
OF WELLINGTON ROAD 34

COUNTY OF WELLINGTON
74 WOOLWICH STREET
GUELPH, ONTARIO N1H 3T9

PAVEMENT MARKING & SIGNAGE PLAN
STA. 3+960 TO STA. 4+270

PROJECT No.	CW2019-007
TRITON FILE No.	M6386
DRAWN BY:	K.J.G.
CHECKED BY:	G.J.K.
APPROVED BY:	H.W.W.
DATE:	AUGUST 2017



SCALES
1:500
HORIZONTAL
VERTICAL

DRAWING
NUMBER
39



BLACKENED STEEL

BASE MATERIAL
TBD WITH
FABRICATOR

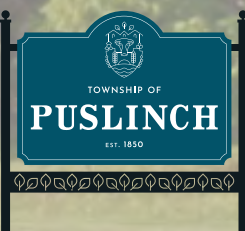
RAISED LETTERING

Inspired by
carpentry details

LASER CUT DETAIL

Inspired by
bargeboard trim

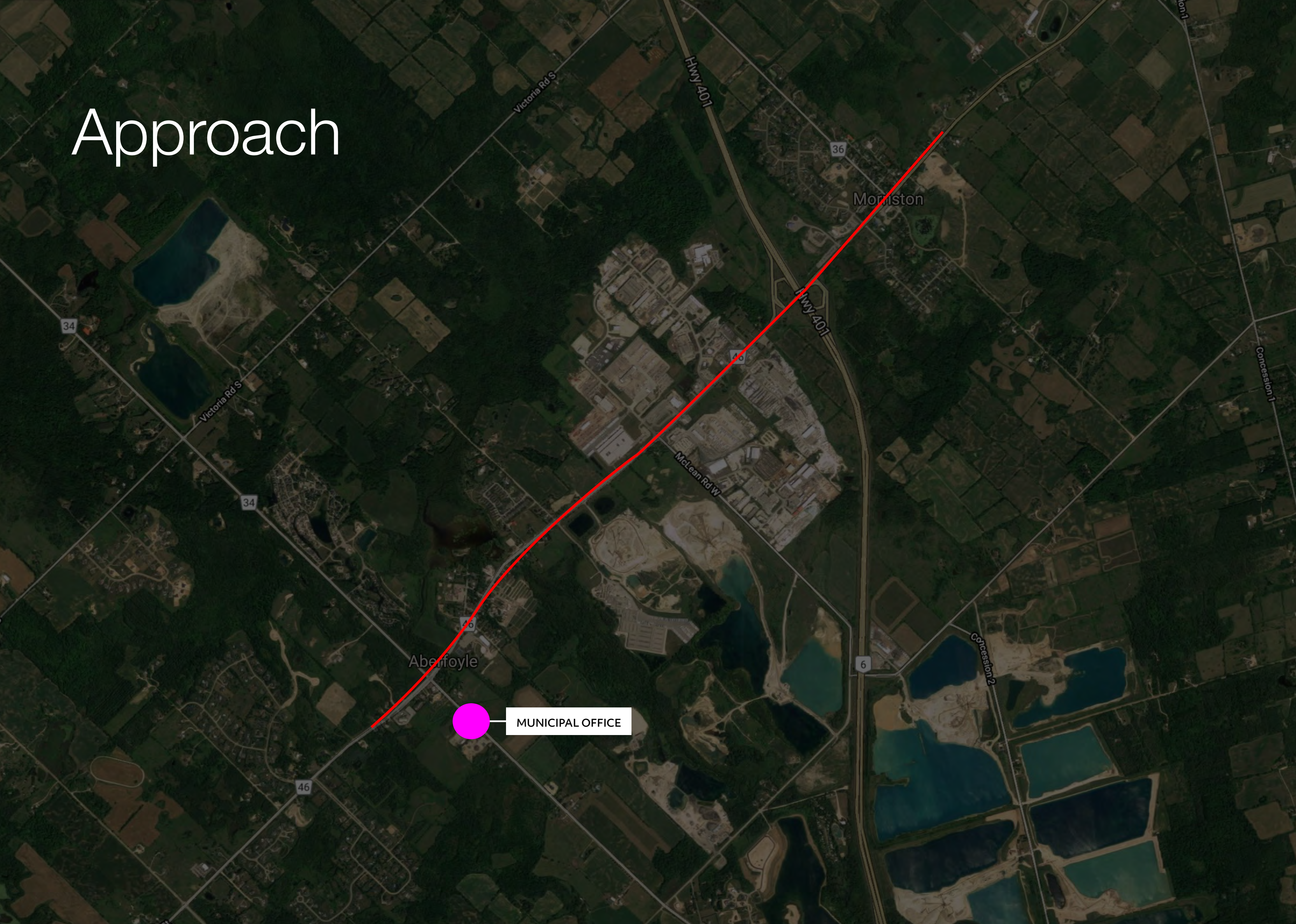








Municipal Office (Exterior)

Aubs&Mugg

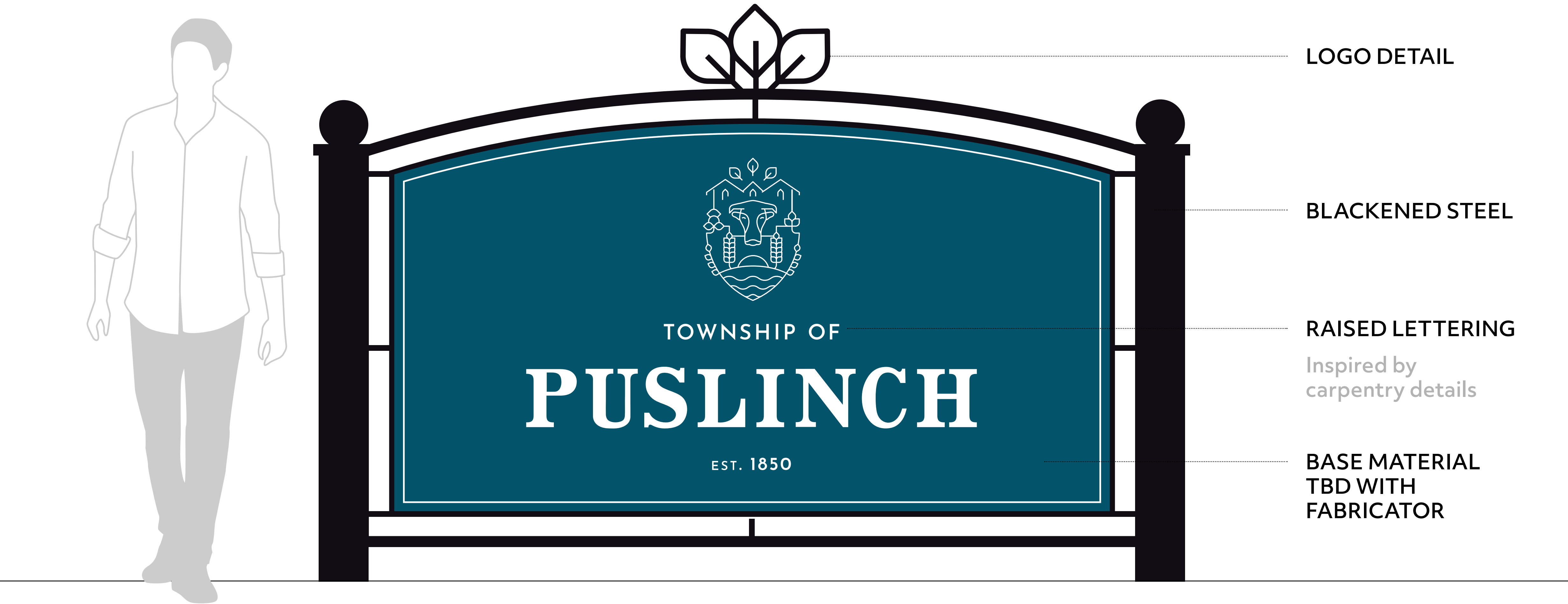
Approach



-  ACTIONABLE AREA
-  JOURNEY ENTRANCES
-  BANNER LOCATION
-  SIGN LOCATION



TOWNSHIP OF PUSLINCH



LOGO DETAIL

BLACKENED STEEL

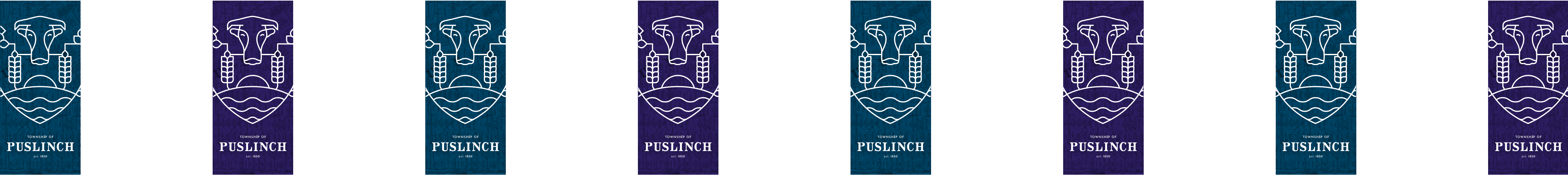
RAISED LETTERING

Inspired by
carpentry details

BASE MATERIAL
TBD WITH
FABRICATOR



COLLECTED





TOWNSHIP OF

PUSLINCH

EST. 1850