



LEGISLATIVE ASSEMBLY OF ONTARIO

RECEIVED

MAR 08 2013

Township of Puslinch

Queen's Park
Toronto, Ontario

March 6, 2013

The Hon. Madeleine Meilleur
Minister of Community Safety and Correctional Services
18th Floor, George Drew Building
25 Grosvenor St.
Toronto, ON
M6A 1Y6

Dear Minister:

I am writing to inform you that the Township of Puslinch and the County of Wellington are considering an application to establish a Community Safety Zone on Highway 6 through the hamlet of Morriston.

This proposal has my unqualified support.

Having been privileged to represent the Township of Puslinch for many years, going back to 1990, I am very familiar with this area. I believe that a Community Safety Zone is needed and would greatly benefit the community.

I have met with local officials and residents many times to discuss this stretch of road, and working with the Council of the Township of Puslinch, we have strongly advocated for the needed bypass around Morriston. In fact, on February 19, the very first day that the House resumed sitting, I tabled a resolution in the Ontario Legislature. If you look at the Order Paper, you'll see that it is the very first Private Members' Notices of Motion listed.

...2



The resolution reads:

That, in the opinion of this House, the Minister of Transportation should prioritize the Highway 6 Morriston Bypass project by placing it on the Southern Highways Program, the Ministry's five-year investment plan in highway construction for Southern Ontario; and in the short term, support immediate measures to calm highway traffic though Morriston in the Township of Puslinch.

We intend to continue to advocate for the Morriston bypass but realize that it won't be built this year. In the meantime, a Community Safety Zone is needed to ensure the safety of the community.

Thank you for your consideration of this matter.

Sincerely,



Ted Arnott, MPP
Wellington-Halton Hills

TA:dr

Cc Mayor Dennis Lever
Karen Landry, CAO, Township of Puslinch
Donna Bryce, Clerk, County of Wellington
William Knetsch



COUNTY OF WELLINGTON

COMMITTEE REPORT

To: Chairman and Members of the Planning and Development Committee
From: Mark Paoli, Senior Policy Planner
Date: March 7, 2013
Subject: Official Plan 5-Year Review – Severance Date Policy (PD2013-11)

1. Background

In response to local municipality and public input, staff have considered options for the effective date for new lots in the Wellington County Official Plan 'Secondary Agricultural Area' designation.

2. Consultation

In June, 2012, Planning Committee directed staff to seek input from those local municipalities that have a 'Secondary Agricultural Area' designation about options to revise the effective date for the lot creation policies. Local Councils were sent excerpts from a planning report showing past severance trends, and passed resolutions expressing preference or support for the date options as set out below:

- Minto - Option 1: Keep the existing policy which is based on the 1999 County Official Plan approval date.
- Erin - Option 2: Change the policy to be based on March 1, 2005 at which point the combined policies of the Provincial Policy Statement, Greenbelt Plan and new Erin Official Plan were all in effect
- Puslinch - Option 3: Change the policy to reflect the date of provincial approval of the County's 5-Year Review Amendment (likely some time in 2013).

At the Open Houses on OPA 81 that were held in September, 2012 and in correspondence, a number of landowners have expressed their view that the severance date should be changed to allow additional lots from parcels that have already had a severance.

Staff also met with the Wellington Federation of Agriculture (WFA) in November to discuss the severance date policy. The WFA suggest that Option 1 should be adhered to, or alternatively that the effective date of lot creation for secondary agricultural areas should be tied to the date in which a Land Evaluation Area Review study or equivalent review is completed and adopted into the official plan for each municipality, and only for properties newly designated as secondary agriculture. The WFA also expressed concern that "Land use policies that promote the proliferation of non-farm residences in prime or secondary agricultural areas diminish our food production capabilities."



3. Discussion

This section discusses trends and growth management considerations to provide context for the 'Secondary Agricultural Area' severance policies in the County, Minto, Erin and Puslinch.

3.1 Wellington County and Provincial Policy Timeline

The following summary is to provide additional context about the key policy trends related to rural residential development since the County Official Plan was approved in 1999.

1999 to 2004

When the Wellington County Official Plan was approved in 1999, all of the municipalities in the County had a 'Prime Agricultural Area' designation. Minto and Puslinch also had a 'Secondary Agricultural Area' designation.

'Prime Agricultural Area'	The County Plan did not allow retirement lots, but allowed 'infilling lots' (a new lot between two existing non-farm residences that were less than 100m apart) as provided for in the 1997 Provincial Policy Statement.
'Secondary Agricultural Area'	Only one new lot for residential purposes may be allowed from a parcel of land existing on the date of provincial approval (April 13, 1999) of the Official Plan. The policies also include criteria, including that the lands have been owned by the applicant for at least 5 years. Once a new residential lot from the parcel has been created, a second residential lot is not allowed from either the severed or retained parcels. These policies have remained unchanged.
'Estate Residential' and 'Lifestyle Community' developments	The County Plan and provincial policy also provided for new estate residential and lifestyle communities in the countryside, if a number of criteria including agricultural and environmental impact could be met.

Summary:

Rural residential development, subject to policy and technical criteria, was possible in a number of areas and in different forms.

2005 to present

Significant changes in the provincial and County policy framework for rural development occurred in late 2004 and during 2005, including: the 2005 Provincial Policy Statement; drafting and approval of the Greenbelt Plan; and consultation on the draft Growth Plan for the Greater Golden Horseshoe. County Council adopted several amendments to the County Official Plan to reflect approval of the new Erin Official Plan, update the growth forecasts, be consistent with the 2005 Provincial Policy Statement, and to conform with the Growth Plan for the Greater Golden Horseshoe which came into effect in 2006.



'Prime Agricultural Area'	'Infilling lots' and retirement lots are no longer permitted under the 2005 Provincial Policy Statement. Redesignation of prime agricultural lands to other uses is not allowed in the Greenbelt Protected Countryside.
'Secondary Agricultural Area'	The new Erin Official Plan added a 'Secondary Agricultural Area'.
'Estate Residential' and 'Lifestyle Community' developments	Not permitted in the Greenbelt. The County Official Plan was amended to not allow new estate residential or lifestyle communities in the rural area County-wide. This was in response to local pressures and anticipated a similar policy in the Growth Plan for the Greater Golden Horseshoe which later did come into effect.

Summary:

The area for potential severances was expanded with the addition of the Erin 'Secondary Agricultural Area', while opportunities for residential development in Prime Agricultural Areas or new estate residential and lifestyle communities were eliminated. The County growth forecasts that were prepared to conform with Places to Grow reflected this change.

3.2 Local Context

Limitations

It should be noted that, where the following sections refer to lot creation potential, the analysis took into account parcel size, environmental constraints, and configuration of existing buildings and structures in considering if a lot could be created. It was not feasible to do Minimum Distance Separation or safe access sight distance calculations. The estimates also rely on an assumption that every landowner will pursue a new lot. Individual landowners may prefer to retain their current lot configuration for a number of reasons.

The discussion of potential re-severances resulting from a date change to 2013 is based on lots created to the start of 2012. It was not possible to assess the re-severance potential of ongoing severance applications in 2012 that had not received final approval. The statistical difference is likely not significant for the purposes of this discussion, in part because lots created in 2012 could also reduce the base of potential lots that meet the current date policy.

Minto

Minto has had a 'Secondary Agricultural Area' designation in the County Official Plan since 1999. Lot creation in this area has been fairly consistent, averaging about 1 per year, with 14 new lots in total. As a result, it would appear that the potential for new lots is constrained by relatively low market pressure, rather than the current severance date policy.

Based on staff analysis of how many lots could be created by re-severing parcels already severed or retained under the current policy, there would be 1 potential re-severance if the date was changed to 2005, and 9 potential re-severances if the date was changed to 2012.



With 143 households forecast for 2011-2031 in the area of Minto outside of urban centres (i.e. outside of Clifford, Hariston and Palmerston), none of the date options would have a large impact on Minto's residential supply. Staff estimate that Minto's forecast and supply are approximately in balance.

Erin

As noted above, Erin did not have a 'Secondary Agricultural Area' designation until 2004. As a result of this change, there were 30 severances in 2006 (lag time between application and final approval is often about a year) 43 severances in 2007, and 10-15/year since 2008. There appears to be a strong market for rural severances in Erin and the area is fairly large, so staff do not anticipate a drop in activity under the current policy.

Based on staff analysis of how many lots could be created by re-severing parcels already severed or retained under the current policy, there would be no potential re-severances if the date was changed to 2005 (as there was no Secondary Agricultural Area until 2004), and 145 potential re-severances if the date was changed to 2013.

Relative to the 473 households forecast for 2011-2031 in the area of Erin outside of urban centres (i.e. outside of Erin Village and Hillsburgh), under current assumptions staff estimate that there is a surplus of about 40 units. The 145 potential re-severances created by the 2013 date would result in a surplus of about 185 units relative to the growth forecast.

Puslinch

Puslinch has had a 'Secondary Agricultural Area' designation in the County Official Plan since 1999. Lot creation in this area trended down from 2000 (40 lots) through 2006 (15), then averaged about 16 per year from 2006 through 2012, with 295 new lots in total since 1999. There appears to be a strong market for rural severances in Puslinch; however, severance activity has been ongoing for 13 years and opportunities are diminishing. This leads to the question as to how much remains of the 'base' of lots that meet the current date policy. To address this, staff undertook a detailed review, and estimate that there are approximately 150 potential severances that could be considered from parcels that have: 'Secondary Agricultural Area' designation; no severance since 1999; at least one acre for both the severed and retained lots; and appropriate zoning.

Based on staff analysis of how many lots could be created by re-severing parcels already severed or retained under the current policy, there would be about 108 potential re-severances if the date was changed to 2005, and about 180 potential re-severances if the date was changed to 2013.

Relative to the 712 households forecast for 2011-2031 in the area of Puslinch outside of urban centres (i.e. outside of Aberfoyle and Morrision), under current assumptions staff estimate that there is a deficit of about 114 units. With the 108 potential re-severances created by the 2005 date, the forecast and supply would be approximately in balance. The 180 potential re-severances created by the 2013 date would result in a surplus of about 66 units relative the growth forecast.



3.3 Agriculture

We have received a comment from the Wellington Federation of Agriculture expressing their view that the severance date should not change. The date change does not affect Prime Agricultural lands and the Secondary Agricultural Area was specifically created to encourage rural land uses to locate on poorer soils. There appear to be opportunities to limit the impact of a date change.

4. Conclusion

With shifts in provincial and County policy, the range of opportunities for rural residential development has narrowed over time. Rural severances continue to be an important part of the growth in some communities, particularly those with constrained urban settlements and poorer farmland, and this is reflected in the County growth forecasts and policies. If the County wants to retain the current severance date, we could adjust the growth forecasts.

In comparing the severance date options against the growth forecasts, it appears that:

- Leaving the date unchanged would not affect Minto or Erin, while Puslinch would run out of lot creation opportunities and not reach its growth forecast;
- Changing the date to 2005 would also not affect Minto or Erin, while Puslinch would have a balance between its supply and growth forecast;
- Changing the date to 2013 would not affect Minto to a large degree, while Erin and Puslinch would have surpluses relative to their growth forecasts.

Therefore, the 2005 date appears to be a reasonable option from a growth management standpoint and to limit the impact of the change.

5. RECOMMENDATION

“THAT Draft OPA 81 be revised to amend the severance date policy to March 1, 2005”

Respectfully submitted,

Mark Paoli,
Senior Policy Planner

Excerpt from the Municipal Act

Meetings open to public

239. (1) Except as provided in this section, all meetings shall be open to the public. 2001, c. 25, s. 239 (1).

Exceptions

- (2) A meeting or part of a meeting may be closed to the public if the subject matter being considered is,
- (a) the security of the property of the municipality or local board;
 - (b) personal matters about an identifiable individual, including municipal or local board employees;
 - (c) a proposed or pending acquisition or disposition of land by the municipality or local board;
 - (d) labour relations or employee negotiations;
 - (e) litigation or potential litigation, including matters before administrative tribunals, affecting the municipality or local board;
 - (f) advice that is subject to solicitor-client privilege, including communications necessary for that purpose;
 - (g) a matter in respect of which a council, board, committee or other body may hold a closed meeting under another Act. 2001, c. 25, s. 239 (2).

Other criteria

(3) A meeting shall be closed to the public if the subject matter relates to the consideration of a request under the *Municipal Freedom of Information and Protection of Privacy Act* if the council, board, commission or other body is the head of an institution for the purposes of that Act. 2001, c. 25, s. 239 (3).

Educational or training sessions

(3.1) A meeting of a council or local board or of a committee of either of them may be closed to the public if the following conditions are both satisfied:

1. The meeting is held for the purpose of educating or training the members.
2. At the meeting, no member discusses or otherwise deals with any matter in a way that materially advances the business or decision-making of the council, local board or committee. 2006, c. 32, Sched. A, s. 103 (1).

Resolution

(4) Before holding a meeting or part of a meeting that is to be closed to the public, a municipality or local board or committee of either of them shall state by resolution,

- (a) the fact of the holding of the closed meeting and the general nature of the matter to be considered at the closed meeting; or
- (b) in the case of a meeting under subsection (3.1), the fact of the holding of the closed meeting, the general nature of its subject-matter and that it is to be closed under that subsection. 2001, c. 25, s. 239 (4); 2006, c. 32, Sched. A, s. 103 (2).

Open meeting

(5) Subject to subsection (6), a meeting shall not be closed to the public during the taking of a vote. 2001, c. 25, s. 239 (5).

Exception

- (6) Despite section 244, a meeting may be closed to the public during a vote if,
- (a) subsection (2) or (3) permits or requires the meeting to be closed to the public; and
 - (b) the vote is for a procedural matter or for giving directions or instructions to officers, employees or agents of the municipality, local board or committee of either of them or persons retained by or under a contract with the municipality or local board. 2001, c. 25, s. 239 (6).

Record of meeting

(7) A municipality or local board or a committee of either of them shall record without note or comment all resolutions, decisions and other proceedings at a meeting of the body, whether it is closed to the public or not. 2006, c. 32, Sched. A, s. 103 (3).

Same

(8) The record required by subsection (7) shall be made by,

(a) the clerk, in the case of a meeting of council; or

(b) the appropriate officer, in the case of a meeting of a local board or committee. 2006, c. 32, Sched. A, s. 103 (3).

Record may be disclosed

(9) Clause 6 (1) (b) of the *Municipal Freedom of Information and Protection of Privacy Act* does not apply to a record of a meeting closed under subsection (3.1). 2006, c. 32, Sched. A, s. 103 (3).

Investigation

239.1 A person may request that an investigation of whether a municipality or local board has complied with section 239 or a procedure by-law under subsection 238 (2) in respect of a meeting or part of a meeting that was closed to the public be undertaken,

(a) by an investigator referred to in subsection 239.2 (1); or

(b) by the Ombudsman appointed under the *Ombudsman Act*, if the municipality has not appointed an investigator referred to in subsection 239.2 (1). 2006, c. 32, Sched. A, s. 104.

Investigator

239.2 (1) Without limiting sections 9, 10 and 11, those sections authorize the municipality to appoint an investigator who has the function to investigate in an independent manner, on a complaint made to him or her by any person, whether the municipality or a local board has complied with section 239 or a procedure by-law under subsection 238 (2) in respect of a meeting or part of a meeting that was closed to the public, and to report on the investigation. 2006, c. 32, Sched. A, s. 104.

Powers and duties

(2) Subject to this section, in carrying out his or her functions under subsection (1), the investigator may exercise such powers and shall perform such duties as may be assigned to him or her by the municipality. 2006, c. 32, Sched. A, s. 104.

Matters to which municipality is to have regard

(3) In appointing an investigator and in assigning powers and duties to him or her, the municipality shall have regard to, among other matters, the importance of the matters listed in subsection (5). 2006, c. 32, Sched. A, s. 104.

Same, investigator

(4) In carrying out his or her functions under subsection (1), the investigator shall have regard to, among other matters, the importance of the matters listed in subsection (5). 2006, c. 32, Sched. A, s. 104.

Same

(5) The matters referred to in subsections (3) and (4) are,

(a) the investigator's independence and impartiality;

(b) confidentiality with respect to the investigator's activities; and

(c) the credibility of the investigator's investigative process. 2006, c. 32, Sched. A, s. 104.

Delegation

(6) An investigator may delegate in writing to any person, other than a member of council, any of the investigator's powers and duties under this Part. 2006, c. 32, Sched. A, s. 104.

Same

(7) An investigator may continue to exercise the delegated powers and duties, despite the delegation. 2006, c. 32, Sched. A, s. 104.

Status

(8) An investigator is not required to be a municipal employee. 2006, c. 32, Sched. A, s. 104.

Application

(9) Subsection 223.13 (6) and sections 223.14 to 223.18 apply with necessary modifications with respect to the exercise of functions described in this section. 2006, c. 32, Sched. A, s. 104.

Report and recommendations

(10) If, after making an investigation, the investigator is of the opinion that the meeting or part of the meeting that was the subject-matter of the investigation appears to have been closed to the public contrary to section 239 or to a procedure by-law under subsection 238 (2), the investigator shall report his or her opinion and the reasons for it to the municipality or local board, as the case may be, and may make such recommendations as he or she thinks fit. 2006, c. 32, Sched. A, s. 104.

Publication of reports

(11) The municipality or local board shall ensure that reports received under subsection (10) by the municipality or local board, as the case may be, are made available to the public. 2006, c. 32, Sched. A, s. 104.



Environmental Registry
Registre environnemental



Ontario

[Government of Ontario](#)

[Site Map](#)

[Français](#)

[About the Registry](#) | [Search](#) | [How do I...?](#) | [MyEBR](#) |
[Advanced Search](#) | [Basic Search](#) | [Court Action](#)

[FAQs](#) | [Links](#) | [Contact Us](#) | [Home](#)

Instrument Proposal Notice:

Proponent: Royal Canin Canada Company
100 Beiber Road
Rural Route Delivery 3
Puslinch Ontario
Canada N1H 6H9

Instrument Type: Permit to take water - OWRA s. 34

EBR Registry Number: 011-8416

Ministry Reference Number: 7526-956NMF

Ministry:
Ministry of the Environment
Date Proposal loaded to the Registry:
February 25, 2013

Keyword(s): Water

Comment Period: 30 days: submissions may be made between February 25, 2013 and March 27, 2013.

Description of Instrument:

This proposal is an amendment to Permit to Take Water Number 2401-7QAPSA. Water will be taken from one (1) well for a pet nutrition products processing plant in the Township of Puslinch.

Details of the water taking are as follows:

Permit type: amendment

Source of water: well

Purpose of taking: pet nutrition processing

Maximum rate per minute (Litres): 333

Maximum number of hours of taking per day: 24

Maximum volume per day (Litres): 240,000

Maximum number of days of taking per year: 365

Period of taking: 10 years

Public Consultation:

This proposal has been posted for a 30 day public review and comment period starting February 25, 2013. If you have any questions, or would like to submit your comments, please do so by March 27, 2013 to the individual listed under "Contact". Additionally, you may submit your comments on-line.

All comments received prior to March 27, 2013 will be considered as part of the decision-making process by the Ministry of the Environment if they are submitted in writing or electronically using the form provided in this notice and reference EBR Registry number 011-8416.

Please Note: All comments and submissions received will become part of the public record. You will not receive a formal response to your comment, however, relevant comments received as part of the public participation process for this proposal will be considered by the decision maker for this proposal.

Contact:

All comments on this proposal must be directed to:

West Central Region
Permit To Take Water Evaluator
Ministry of the Environment
Operations Division
West Central Regional Office
119 King Street West
Floor 12
Hamilton Ontario
L8P 4Y7
Phone: (905) 521-7833
Fax: (905) 521-7820
Toll Free Phone: (800) 668-4557

To submit a comment online, click the submit button below:

[Submit Comment](#)

Location(s) Related to this Instrument:

100 Beiber Road
Lot 28, Concession 8
Township of Puslinch, County of Wellington

TOWNSHIP OF PUSLINCH

Additional Information:

The following government offices have additional information regarding this Proposal. To arrange a viewing of these documents please call the Ministry Contact or the Office listed below.

West Central Regional Office
119 King Street West
Floor 12
Hamilton Ontario
L8P 4Y7
Phone: (905) 521-7640
Toll Free Phone: (800) 668-4557

[Add Notice into My Watch List](#)

The materials on this web site are protected by Crown copyright. You may copy and re-distribute any of the Environmental Bill of Rights information on this web site provided that the contents remain unchanged and the source of the contents is clearly referenced. You are not permitted to alter or add to the contents.

[ONTARIO HOME](#) | [CONTACTS](#) | [HELP](#) | [SITEMAP](#) | [FRANÇAIS](#)



This site is maintained by the Government of Ontario, Canada.

[PRIVACY](#) | [IMPORTANT NOTICES](#)

Copyright information: [© Queen's Printer for Ontario, 1994-2013](#)

Staw 5a



Dufferin Aggregates
2300 Steeles Ave W, 4th Floor
Concord, ON L4K 5X6
Canada

March 13, 2013

RECEIVED
MAR 13 2013
Township of Puslinch

Al Murray
Guelph Area Team Supervisor
Ministry of Natural Resources
Guelph District
1 Stone Road West
Guelph, Ontario
N1G 4Y2

Attention: Mr. Al Murray

**Re: Monthly Monitoring Report
Mill Creek Pit, License #5738
Township of Puslinch, Wellington County**

Please find enclosed the required monitoring data for the month of February 2013. As indicated, there were no exceedences in this month.

If you have any questions, please do not hesitate to call.

Sincerely,

Ron Van Ooteghem
Site Manager

C.c.
Brenda Law (Township of Puslinch)
Sonja Strynatka (GRCA)
Kevin Mitchell (Dufferin Aggregates)
University of Guelph

Monthly Reporting
Mill Creek Aggregates Pit
February 2013

Date	DP21 (mASL)	Threshold Value (mASL)	Exceedance
8-Feb-13	306.05	305.66	NO
13-Feb-13	306.00	305.66	NO
20-Feb-13	305.86	305.66	NO
28-Feb-13	305.75	305.66	NO

Date	BH13 (mASL)	DP21 (mASL)	Head Difference (m)	Threshold Value (m)	Exceedance
8-Feb-13	306.25	306.05	0.20	0.11	NO
13-Feb-13	306.17	306.00	0.17	0.11	NO
20-Feb-13	306.17	305.86	0.31	0.11	NO
28-Feb-13	306.13	305.75	0.38	0.11	NO

Date	DP17 (mASL)	Threshold Value (mASL)	Exceedance
8-Feb-13	305.43	305.17	NO
13-Feb-13	305.28	305.17	NO
20-Feb-13	305.28	305.17	NO
28-Feb-13	305.25	305.17	NO

Date	BH92-12 (mASL)	DP17 (mASL)	Head Difference (m)	Threshold Value (m)	Exceedance
8-Feb-13	305.52	305.43	0.09	0.07	NO
13-Feb-13	305.43	305.28	0.15	0.07	NO
20-Feb-13	305.47	305.28	0.19	0.07	NO
28-Feb-13	305.36	305.25	0.11	0.07	NO

Date	DP3 (mASL)	Threshold Value (mASL)	Exceedance
8-Feb-13	304.73	304.54	NO
13-Feb-13	304.76	304.54	NO
20-Feb-13	304.77	304.54	NO
28-Feb-13	304.77	304.54	NO

Date	DP6 (mASL)	DP3 (mASL)	Head Difference (m)	Threshold Value (m)	Exceedance
8-Feb-13	305.58	304.73	0.85	0.57	NO
13-Feb-13	305.51	304.76	0.75	0.57	NO
20-Feb-13	305.48	304.77	0.71	0.57	NO
28-Feb-13	305.54	304.77	0.77	0.57	NO

Date	DP2 (mASL)	Threshold Value (mASL)	Exceedance
8-Feb-13	304.16	303.65	NO
13-Feb-13	304.16	303.65	NO
20-Feb-13	304.16	303.65	NO
28-Feb-13	304.16	303.65	NO

Date	BH92-27 (mASL)	DP2 (mASL)	Head Difference (m)	Threshold Value (m)	Exceedance
8-Feb-13	305.01	304.16	0.85	0.43	NO
13-Feb-13	304.99	304.16	0.83	0.43	NO
20-Feb-13	304.94	304.16	0.78	0.43	NO
28-Feb-13	304.96	304.16	0.80	0.43	NO

Date	DP1 (mASL)	Threshold Value (mASL)	Exceedance
8-Feb-13	304.34	303.88	NO
13-Feb-13	304.34	303.88	NO
20-Feb-13	304.34	303.88	NO
28-Feb-13	304.34	303.88	NO

Date	BH92-29 (mASL)	DP1 (mASL)	Head Difference (m)	Threshold Value (m)	Exceedance
8-Feb-13	305.21	304.34	0.87	0.29	NO
13-Feb-13	305.20	304.34	0.86	0.29	NO
20-Feb-13	305.11	304.34	0.77	0.29	NO
28-Feb-13	305.18	304.34	0.84	0.29	NO

Date	DP5C (mASL)	Threshold Value (mASL)	Exceedance
8-Feb-13	303.32	302.88	NO
13-Feb-13	303.32	302.88	NO
20-Feb-13	303.32	302.88	NO
28-Feb-13	303.21	302.88	NO

Date	OW5-84 (mASL)	DP5C (mASL)	Head Difference (m)	Threshold Value (m)	Exceedance
8-Feb-13	303.78	303.32	0.46	0.30	NO
13-Feb-13	303.78	303.32	0.46	0.30	NO
20-Feb-13	303.78	303.32	0.46	0.30	NO
28-Feb-13	303.78	303.21	0.57	0.30	NO

Note: DP1 and DP2 frozen all events, DP17 frozen Feb 13 & 20, DP5C frozen Feb 8, 13 & 20.

Monthly Reporting
 Mill Creek Aggregates Pit
 February 2013

								Max. Allowable as per PTTW- Main Pond				
Total Monthly Precipitation (mm):		47.8	Waterloo-Wellington Airport (February Actual)					(Imperial Gallons)				(Litres)
Total Monthly Normal Precipitation (mm):		56	Waterloo-Wellington Airport (30-year Normal)					2,500			per minute	11,365
								1,800,000			per day	8,183,000
Date	Below Water Table Extraction (wet tonnes) Phase 2	Below Water Table Extraction (wet tonnes) Phase 3	Water Pumped from Main Pond (gals)	Water Pumped from Active Silt Pond (gals)	Main Pond Level (mASL)	Exceedance Y/N (BELOW 305.5 mASL)	Phase 2 Pond Level (mASL)	Exceedance Y/N (BELOW 305.0 mASL)	Phase 3 Pond Level (mASL)	Exceedance Y/N (BELOW 303.85 mASL)	SP2 Level (mASL)	Exceedance Y/N (ABOVE 305.5 mASL) or (BELOW 304.5 mASL)
1-Jan-13	0	0	0	0	306.40	NO	305.79	NO	304.97	NO	304.95	NO
2-Jan-13	0	0	0	0	306.40	NO	305.79	NO	304.97	NO	304.95	NO
3-Jan-13	0	0	0	0	306.40	NO	305.79	NO	304.97	NO	304.95	NO
4-Jan-13	0	0	0	0	306.40	NO	305.79	NO	304.97	NO	304.95	NO
5-Jan-13	0	0	0	0	306.40	NO	305.79	NO	304.97	NO	304.95	NO
6-Jan-13	0	0	0	0	306.40	NO	305.79	NO	304.97	NO	304.95	NO
7-Jan-13	0	0	0	0	306.40	NO	305.79	NO	304.97	NO	304.95	NO
8-Jan-13	0	0	0	0	306.40	NO	305.79	NO	304.97	NO	304.95	NO
9-Jan-13	0	0	0	0	306.40	NO	305.79	NO	304.97	NO	304.95	NO
10-Jan-13	0	0	0	0	306.40	NO	305.79	NO	304.97	NO	304.95	NO
11-Jan-13	0	0	0	0	306.40	NO	305.79	NO	304.97	NO	304.95	NO
12-Jan-13	0	0	0	0	306.40	NO	305.79	NO	304.97	NO	304.95	NO
13-Jan-13	0	0	0	0	306.40	NO	305.79	NO	304.97	NO	304.95	NO
14-Jan-13	0	0	0	0	306.40	NO	305.79	NO	304.97	NO	304.95	NO
15-Jan-13	0	0	0	0	306.40	NO	305.79	NO	304.97	NO	304.95	NO
16-Jan-13	0	0	0	0	306.40	NO	305.79	NO	304.97	NO	304.95	NO
17-Jan-13	0	0	0	0	306.40	NO	305.79	NO	304.97	NO	304.95	NO
18-Jan-13	0	0	0	0	306.40	NO	305.79	NO	304.97	NO	304.95	NO
19-Jan-13	0	0	0	0	306.40	NO	305.79	NO	304.97	NO	304.95	NO
20-Jan-13	0	0	0	0	306.40	NO	305.79	NO	304.97	NO	304.95	NO
21-Jan-13	0	0	0	0	306.40	NO	305.79	NO	304.97	NO	304.95	NO
22-Jan-13	0	0	0	0	306.40	NO	305.79	NO	304.97	NO	304.95	NO
23-Jan-13	0	0	0	0	306.40	NO	305.79	NO	304.97	NO	304.95	NO
24-Jan-13	0	0	0	0	306.40	NO	305.79	NO	304.97	NO	304.95	NO
25-Jan-13	0	0	0	0	306.40	NO	305.79	NO	304.97	NO	304.95	NO
26-Jan-13	0	0	0	0	306.40	NO	305.79	NO	304.97	NO	304.95	NO
27-Jan-13	0	0	0	0	306.40	NO	305.79	NO	304.97	NO	304.95	NO
28-Jan-13	0	0	0	0	306.40	NO	305.79	NO	304.97	NO	304.95	NO
29-Jan-13	0	0	0	0	306.40	NO	305.79	NO	304.97	NO	304.95	NO
30-Jan-13	0	0	0	0	306.40	NO	305.79	NO	304.97	NO	304.95	NO
31-Jan-13	0	0	0	0	306.40	NO	305.79	NO	304.97	NO	304.95	NO
Total	0	0	-	-								
Avg./ day	0.0	0.00	-	-	306.40	NO	305.79	NO	304.97	NO	304.95	NO

Note: No exceedances to report, ponds frozen, no pumping.



CAPITAL PAVING INC.

Quality Construction by Quality People
P.O. Box 815 Guelph, Ontario N1H 6L8

Star 5b

March 11, 2013

Township of Puslinch
7404 Wellington Road 34
Guelph ON N1H 6H9

RECEIVED

MAR 13 2013

Township of Puslinch

Attention: Ms. Karen Landry, CAO/Clerk

RE: 2012 Groundwater Monitoring Report
Capital Paving Inc., Wellington Pit, Licence No. 20085
Part Lots 7 and 8, Concession 3, Township of Puslinch

Dear Ms. Landry,

Please find enclosed with this letter, a copy of the 2012 Groundwater Monitoring Summary for Capital Paving's Wellington Pit, prepared by Groundwater Science Corp.

A copy has also been submitted to the Ontario Ministry of Natural Resources, Guelph District office.

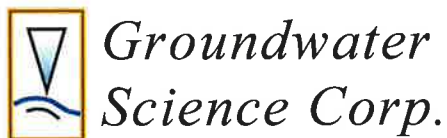
Should you have any questions, please do not hesitate to contact me at (519) 822-4511 or glourenco@capitalpaving.on.ca

Sincerely,

George Lourenco, P.Eng
Resources Manager

C.C. Ministry of Natural Resources, Guelph District





24 Erb Street East,
Waterloo, ON N2J 1L6
Phone: (519) 746-6916
Fax: (519) 884-5996

March 6, 2013

George Lourenco
Resource Manager,
Capital Paving Inc.
P.O. Box 815
Guelph, ON
N1H 6L8

RECEIVED

MAR 13 2013

Township of Puslinch

Dear Mr. Lourenco:

**RE: 2012 Groundwater Monitoring Summary,
Wellington Pit, Licence No. 20085
Part Lots 7 and 8, Concession 3, Township of Puslinch**

This letter is a summary of the results of the 2012 groundwater monitoring program completed for the above reference property. The site location is shown on **Figure 1** (attached).

1.0 Monitoring Program Requirements

The Licence conditions as listed on the Site Plan are summarized as follows:

- *Quarterly (seasonal) groundwater level measurements at locations BH204, BH205, BH213, BH214, BH219, A3, A4, A5, A8, A10, and TP319 for the life of the pit;*
- *Annual reporting of the monitoring data. The report shall include a review of the monitoring program and recommendations regarding future monitoring frequency. It will also include a determination of the "normal" seasonal groundwater table variations that will trigger mitigation measures;*
- *Should groundwater levels at any time be measured above or below the "normal" seasonal groundwater table variations, all below groundwater table extraction will cease immediately and the operator will inform the Ministry of Natural Resources (MNR), Ministry of the Environment (MOE) and the Township of Puslinch.*

2.0 Monitoring Completed

Water level monitoring at the site during the period 1997 to 2010 was completed by Stantec Consulting Ltd. Annual reporting was prepared by Stantec during years of site operation up until 2010 summarizing operational activities and monitoring results. Please refer to those previous reports for specific information. Based on recommendations made by Stantec in the March 30, 2010 report, monitoring was discontinued at that time. The historical data (April 1997 to January 2010) available for the site is incorporated into this (2012) report.

Groundwater Science Corp. was retained in November 2012 to reinstate the monitoring program. As part of that work the monitors were located and measurements obtained on November 26, 2012. At that time drive-point piezometers (A3, A4, A5, A8 and A10) could not be located. During a

subsequent visit on January 29, 2013, locations A3, A8 and A10 were found, however locations A4 and A5 could not be located and it is assumed that the two piezometers had been removed sometime after January 2010. Locations A4 and A5 were reinstalled on January 29, 2013. Based on the installation conditions and water level response, both piezometers are installed in a fine grained till unit and water levels had not recovered to static by the end of the monitoring event.

The monitoring locations are shown on **Figure 1**. Monitor installation details are shown in **Table 1**.

Monitor	Elevations (mAMSL)			
	Ground	Top of Well	Top of Screen	Bottom of Well
BH204	318.71	319.63	305.51	304.01
BH205	315.52	316.57	301.12	299.62
BH213	324.79	325.56	304.69	303.19
BH214	324.30	325.17	316.00	314.50
BH219	330.21	331.21	315.21	313.71
TP319	319.0*	319.9*	317.9*	316.4*
A3	315.6*	316.4*	314.5*	314.2*
A4	316.7*	317.6*	315.6*	315.3*
A5	313.9*	314.8*	312.9*	312.6*
A8	317.0*	317.9*	316.6*	316.3*
A10	315.4*	316.3*	313.7*	313.4*

mAMSL = metres above mean sea level
monitor elevations as per Stantec Consulting Ltd. report March 30, 2010
A3 and A5 elevations revised as per installation notes January 29, 2013
* elevations estimated from Site Plan topographic mapping

Table 1: Monitor Installation Details

Summaries of the water level data available for the site are attached to this letter report, in both tabular and hydrograph formats.

3.0 Discussion of Monitoring Results

For comparison to the hydrographs, a plot of the monthly precipitation and 30-year monthly precipitation normal reported for the Waterloo-Wellington Airport (and overall area) for the years 1994 to 2012 is attached to this report. Missing or incomplete 2007, 2008 and 2010 (November) data for the station was augmented using data reported for the University of Waterloo weather station (<http://weather.uwaterloo.ca/>). In 2012 the estimated total reported precipitation of 655.5 mm is approximately 252.6 mm below the current 30-yr mean value of 908.1 mm.

The data gathered to date indicates that groundwater elevations at the site have been maintained within in similar range under varying climate conditions since 1997 (prior to extraction). As shown on the hydrographs, water levels in late 2012 and early 2013 also remain within the historical range observed. No long-term trends that indicate significant or measurable groundwater level impacts are evident. Therefore both historical and current water level elevations are interpreted to be within the range of “natural” seasonal conditions for the site and immediate area. This is consistent with monitoring results at other nearby sites over the same period.

Theoretically the reduction in runoff associated with the extraction to date has likely led to additional recharge as compared to the original site condition. This effect would tend to slightly increase local seasonal water table fluctuation and average annual groundwater levels. As illustrated by the

hydrographs however, it is likely that the on-going seasonal and annual variation in recharge has a larger influence on local water table elevations, and masks any potential small-scale effect related to the extraction.

The maximum and minimum elevations measured in the period 1997 to 2010 are shown on the data tables and likely represents the “natural” range in fluctuation at the site. No mitigation measures response is recommended as a result of the monitoring data.

4.0 Recommendations

The monitoring program as listed on the Site Plan should continue in 2013.

If you have any questions or require further assistance please do not hesitate to contact me.

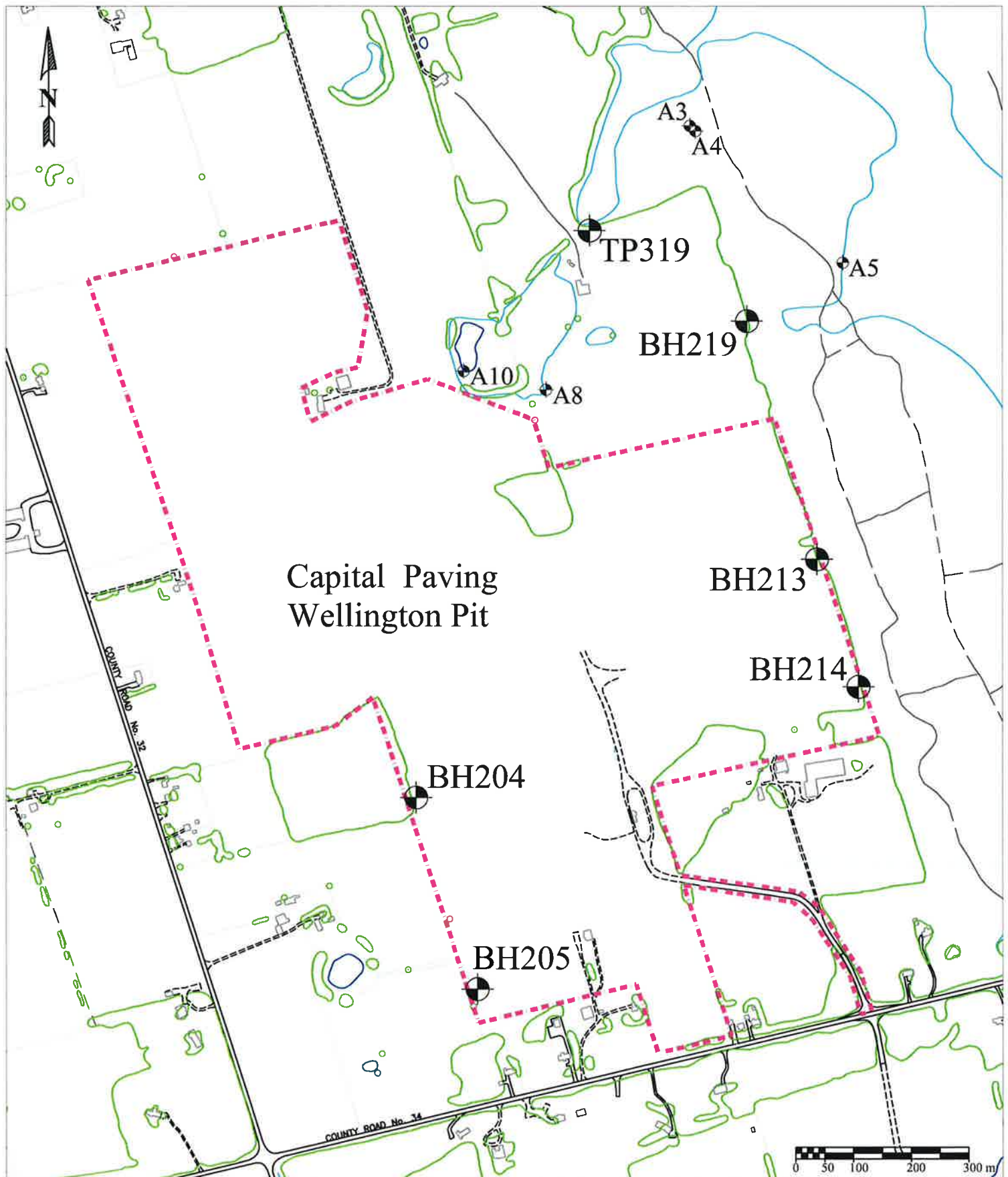
Sincerely,



Andrew Pentney, P.Geo.
Hydrogeologist



Attached: Figure 1 Monitoring Locations
 Water Level Monitoring Data Summary Table
 Hydrograph – Monitoring Well Water Level Data
 Hydrograph – Drive-Point Piezometer Water Level Data
 Precipitation Analysis



monitoring location	scale : as shown March 2013
Licenced boundary (approx.)	
surface water (pond, creek)	
mapped wetlands	

modified from: 1,10,000 OBM Mapping
 UNDER LICENSE, WITHOUT PREJUDICE OR
 ENDORSEMENT FROM THE QUEEN'S PRINTER OF ONTARIO

Figure 1: Monitoring Locations

Annual Monitoring Report
 Capital Paving Inc. Wellington Pit
 Lot 7, Con. 3, Township of Puslinch, County of Wellington

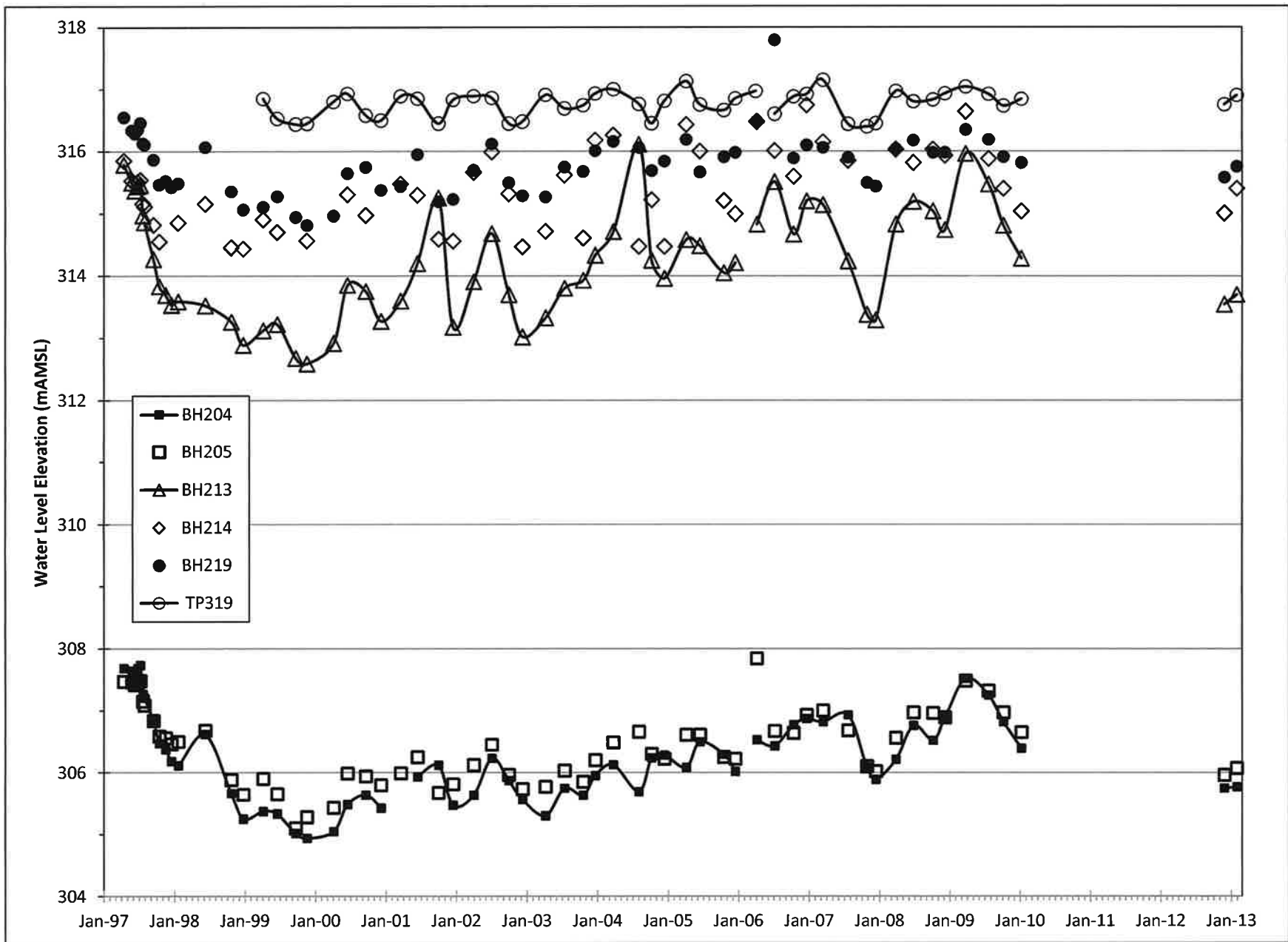
Date	Water Level Elevation (mAMSL)														
	BH204	BH205	BH213	BH214	BH219	TP319	A3 GW	A3 SW	A4 GW	A5 GW	A5 SW	A8 GW	A8 SW	A10 GW	A10 SW
15-Apr-97	307.68	307.47	315.79	315.85	316.55										
26-May-97	307.64	307.46	315.50	315.53	316.34										
11-Jun-97	307.58	307.42	315.37	315.49	316.29										
25-Jun-97	307.68	307.45	315.44	315.51	316.35										
9-Jul-97	307.73	307.48	315.46	315.54	316.46										
22-Jul-97	307.27	307.15	314.98	315.16	316.13										
23-Jul-97								315.62	315.55		313.78	317.27	317.09	314.80	315.50
30-Jul-97	307.21	307.09	314.87	315.11	316.11		314.75	315.59	315.51	313.72	313.76	317.28	317.07	315.43	315.45
15-Sep-97	306.83	306.84	314.27	314.82	315.87		315.53		315.43	313.81	313.84	317.18	317.00	315.19	
15-Oct-97	306.47	306.59	313.83	314.55	315.46		315.58		315.39	313.94	313.88	317.08		315.04	
17-Nov-97	306.37	306.56	313.69		315.52		315.58	315.59	315.46	313.98	313.96	317.05		315.00	
17-Dec-97	306.18	306.46	313.53		315.42		315.00	315.61	315.47	313.97	313.97	316.98		314.89	
21-Jan-98	306.11	306.50	313.59	314.85	315.48				315.62					314.70	
10-Jun-98	306.62	306.68	313.52	315.15	316.07		315.60	315.60	315.54	313.76		317.26	317.07	315.18	
23-Oct-98	305.66	305.88	313.26	314.45	315.35		314.99	dry	dry	313.32	dry	316.60	dry	dry	
24-Dec-98	305.25	305.64	312.89	314.43	315.06		315.08	dry	dry	313.72	dry	316.45	dry	dry	
6-Apr-99	305.37	305.90	313.12	314.90	315.10	316.85	315.66		315.59	314.15	313.94	317.11	dry	314.79	dry
18-Jun-99	305.33	305.65	313.22	314.70	315.27	316.53	315.51	dry	315.39	313.72	dry	316.76	dry	314.13	dry
22-Sep-99	305.02	305.10	312.68		314.94	316.44	dry	dry	dry	dry	dry	316.16	dry	dry	dry
19-Nov-99	304.94	305.28	312.59	314.56	314.81	316.45	316.15	dry	dry	313.84	dry	316.13	dry	dry	dry
5-Apr-00	305.05	305.43	312.92		314.96	316.80	315.53	dry	315.44	313.90	313.87	316.82	dry	dry	dry
16-Jun-00	305.48	305.99	313.85	315.30	315.64	316.93	315.82	315.79	316.71	313.96	313.91	317.24	317.02	dry	dry
19-Sep-00	305.64	305.94	313.75	314.97	315.74	316.58	315.54	dry	315.43	313.68	dry	317.11	dry	314.65	dry
7-Dec-00	305.43	305.80	313.27		315.37	316.50	315.34	dry	dry			316.86	dry	314.24	dry
19-Mar-01		305.99	313.60	315.47	315.43	316.89	dry		315.63	314.13		317.02	dry	315.12	dry
14-Jun-01	305.93	306.25	314.20	315.29	315.95	316.85	315.70	315.69	315.61	313.86	313.85	317.22	dry		dry
1-Oct-01	306.12	305.67	315.25	314.59	315.19	316.45	315.05	dry	dry	313.27	dry		dry	313.71	dry
15-Dec-01	305.47	305.81	313.18	314.56	315.23	316.83	315.56	315.61	315.46	313.88	313.83	317.08	dry	314.48	dry
1-Apr-02	305.63	306.12	313.91	315.66	315.69	316.89	315.73		315.64	313.86	313.94	316.96	dry	315.16	dry
4-Jul-02	306.23	306.45	314.68	315.99	316.12	316.86	315.72	315.71	315.66	313.80	313.79	317.27	317.06		dry
30-Sep-02	305.87	305.96	313.70	315.31	315.49	316.45	315.21	dry	dry	313.31	dry	316.94	dry	314.12	dry
10-Dec-02	305.56	305.73	313.02	314.46	315.28	316.48	315.09	dry	dry	313.51	dry	316.74	dry	313.87	dry
8-Apr-03	305.30	305.77	313.33	314.71	315.26	316.91	315.57		315.53			317.00		315.03	dry
15-Jul-03	305.75	306.03	313.80	315.61	315.74	316.69	315.63	dry	315.54	313.62	dry	317.03	dry	314.90	dry
20-Oct-03	305.63	305.85	313.93	314.60	315.67	316.74	315.55	315.60	315.48	313.77	313.74	316.94	dry	314.33	dry
21-Dec-03	305.95	306.20	314.33	316.18	316.01	316.93			315.65			317.04	dry	315.11	dry

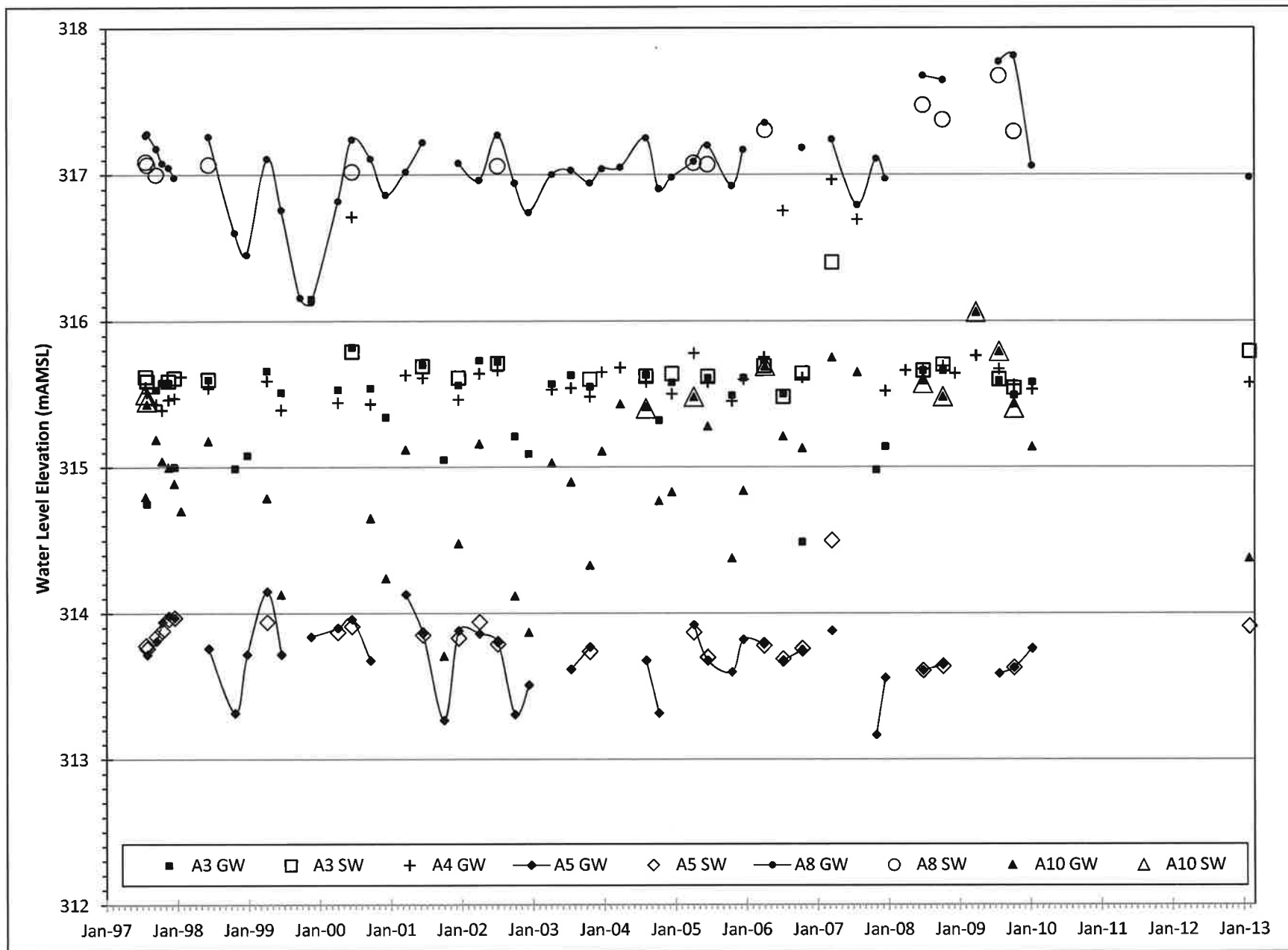
Date	Water Level Elevation (mAMSL)														
	BH204	BH205	BH213	BH214	BH219	TP319	A3 GW	A3 SW	A4 GW	A5 GW	A5 SW	A8 GW	A8 SW	A10 GW	A10 SW
24-Mar-04	306.13	306.49	314.71	316.26	316.16	317.00			315.68			317.05	dry	315.43	
3-Aug-04	305.69	306.66	316.11	314.47	316.06	316.76	315.63	315.62	315.58	313.68	dry	317.25	dry	315.41	315.40
8-Oct-04	306.24	306.30	314.25	315.22	315.69	316.45	315.32	dry	dry	313.32	dry	316.90	dry	314.77	dry
13-Dec-04	306.28	306.22	313.96	314.47	315.84	316.81	315.58	315.64	315.50			316.98	dry	314.83	dry
5-Apr-05	306.08	306.61	314.58	316.43	316.19	317.13			315.78	313.92	313.87	317.09	317.08	315.48	315.48
15-Jun-05	306.50	306.61	314.48	316.00	315.66	316.75	315.61	315.62	315.58	313.68	313.70	317.20	317.07	315.28	dry
17-Oct-05	306.29	306.25	314.05	315.20	315.91	316.66	315.49	dry	315.45	313.60	dry	316.92	dry	314.38	dry
15-Dec-05	306.02	306.22	314.21	314.99	315.98	316.85	315.61		315.60	313.82		317.17	dry	314.84	dry
31-Mar-06						316.97	315.73	315.69	315.75	313.79	313.78				
6-Apr-06	306.53	307.84	314.83	316.47	316.48							317.35	317.30	315.69	315.69
7-Jul-06	306.43	306.67	315.51	316.01	317.79	316.60	315.50	315.48	316.75	313.68	313.69			315.21	dry
13-Oct-06	306.77	306.64	314.67	315.59	315.89	316.88	314.49	315.64	315.61	313.75	313.76	317.18	dry	315.13	dry
20-Dec-06	306.87	306.93	315.20	316.74	316.10	316.92									
15-Mar-07	306.82	307.00	315.14	316.15	316.06	317.15		316.40	316.96	313.88	314.50	317.24	dry	315.75	dry
23-Jul-07	306.93	306.68	314.24	315.85	315.90	316.44	dry	dry	316.69	dry	dry	316.79	dry	315.65	dry
29-Oct-07	306.09	306.10	313.38		315.49	316.40	314.98	dry	dry	313.17	dry	317.11	dry	dry	dry
14-Dec-07	305.89	306.02	313.29		315.43	316.45	315.14		315.52	313.56		316.97		dry	
27-Mar-08	306.21	306.56	314.83	316.03	316.04	316.97			315.66						
26-Jun-08	306.76	306.97	315.19	315.81	316.17	316.80	315.66	315.66	315.67	313.61	313.61	317.67	317.47	315.59	315.57
6-Oct-08	306.52	306.96	315.04	316.03	315.98	316.83	315.66	315.70	315.69	313.65	313.64	317.64	317.37	315.48	315.48
7-Dec-08	306.89	306.89	314.74	315.93	315.98	316.93			315.64						
25-Mar-09	307.52	307.48	315.96	316.63	316.34	317.04			315.76					316.06	316.06
22-Jul-09	307.25	307.32	315.47	315.88	316.18	316.92	315.59	315.60	315.67	313.59	dry	317.77	317.67	315.79	315.79
7-Oct-09	306.82	306.97	314.81	315.40	315.91	316.73	315.49	315.54	315.56	313.63	313.63	317.81	317.29	315.43	315.40
8-Jan-10	306.39	306.65	314.28	315.03	315.81	316.84	315.58		315.53	313.76		317.06		315.14	
26-Nov-12	305.75	305.96	313.55	315.00	315.58	316.75									
29-Jan-13	305.77	306.07	313.70	315.40	315.76	316.90		315.79	315.58		313.91	316.98	dry	314.38	dry

Note: GW = groundwater, SW = surface water
1997 to 2010 data as reported by Stantec

subsequent data as measured by Groundwater Science Corp.

1997 to 2010 Maximum and Minimum Elevations (mAMSL)															
max	307.73	307.84	316.11	316.74	317.79	317.15	316.15	316.40	316.96	314.15	314.50	317.81	317.67	316.06	316.06
min	304.94	305.10	312.59	314.43	314.81	316.40	314.49	315.48	315.39	313.17	313.61	316.13	317.00	313.71	315.40





Precipitation Analysis - Waterloo/Wellington Station Reported Precipitation minus 30-yr Normal

