

6.7(a)

From: Justin Armstrong
Sent: Thursday, August 22, 2013 10:02 PM
To: 'KLandry@puslinch.ca'; DonCreed@puslinch.ca
Cc: George Elliott
Subject: Black Bridge - 2013-08-13 - Discussion Summary

Karen and Don,

Thank you for taking the time to meet with George and I last Tuesday (, August 13th).

I just wanted to provide you with a quick summary of the questions that came out of the meeting that we are hopeful to have comment back from the Township on by September 6th/7th (as discussed), before our pending heritage stakeholders meeting.

1. Black Bridge Area Cultural Heritage Study – Does the Township have comment with respect to –

- The proposed study boundary?
- Developing a Cultural Heritage Landscape Plan complete with an OP amendment?
- Historical practice regarding individual designations? (I.e. Roszell Farm current status)

2. Black Bridge Road Environmental Assessment (EA) – Does the Township have comment with respect to –

- Providing a Letter of Approval-in-Principle to proceed with the EA on Township-owned land (Townline Road from Wellington Road 34 northerly to the intersection at Black Bridge Road/Roszell Road)? OR
- Pursuing a transfer of ownership of the subject Townline Road segment? If so, anticipated/preferred timing for either approach? Would a 0.30m/1' reserve be required along the Township property frontages (E. side of Townline Road)?

In the event I've missed something, or you'd like to add something, please include the same in your response/reply.

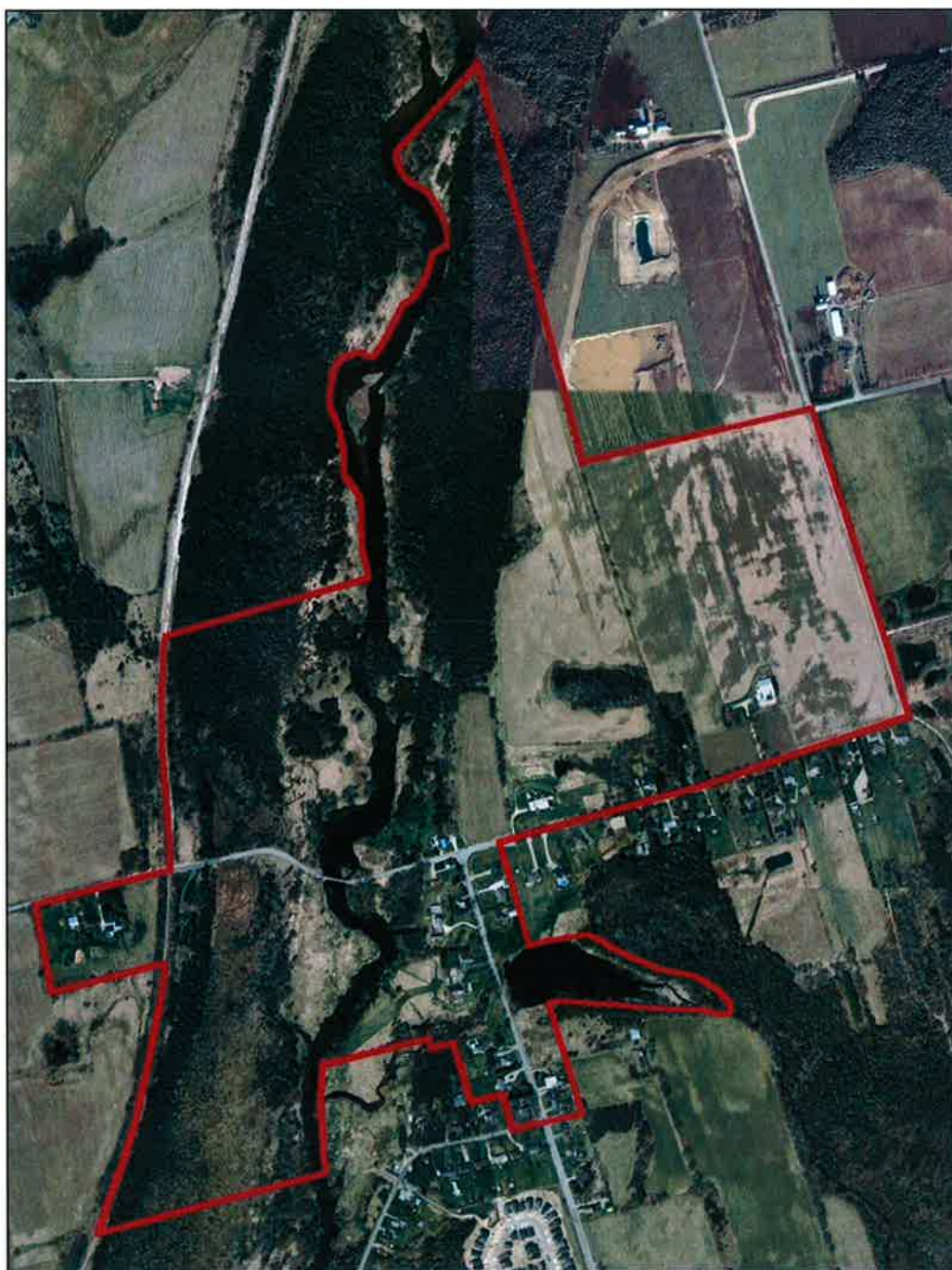
Thanks again, and we look forward to receiving your comments.

Best regards,

Justin Armstrong, P.Eng.

Manager of Design & Construction Engineering

City of Cambridge
50 Dickson Street, 3rd Floor, PO Box 669
Cambridge, ON N1R 5W8



Map 14: Suggested boundary for the Black Bridge Cultural Heritage Landscape.

6.8(a).

From: Kathy Menyes [mailto:kmenyes@hrca.on.ca]
Sent: June-24-13 5:12 PM
To: Karen Landry
Subject: Conservation Halton to Puslinch Council on June 5th - Watershed Report Card

Hi Karen. As you may recall, Mayor Lever asked me a question during my presentation on the Watershed Report Card and I indicated that I would get back to Council with the answer. I'm hoping that as CAO/Clerk, you can help pass the answer onto your Mayor and Council.

The Mayor had asked about a couple of "B" scores in your municipality, why there were a few "B's" and what the Township and the citizens could do to bring the scores up to an "A"? Without getting too technical, the answers are below.

The scores are based on specific criteria and indexing for the 4 indicators (Surface Water Quality, Forest Conditions, Impervious Land Cover, Groundwater Quality) – the criteria and indexing is measured differently for each indicator (i.e. grade criteria and resulting health levels for forest conditions are measured differently than those used to grade surface water quality for example. Simply put, forest conditions are measured by size of forests and surface water quality is measured by levels of nitrogen and chloride in the water.

Also, our 'grading' is conducted on a subwatershed basis. So, a "B" grade in a subwatershed in Puslinch may be the result of a poor condition in Hamilton or Milton at one of the sampling sites. So, the lower grade may have nothing to do with a condition in the Township's boundaries. It's just that you share the noted subwatershed with a neighbouring municipality that may have a poor condition in it that has impacted subwatershed conditions in such a way that the overall grade is a little lower.

Please note, however, that I did not look into the specifics of the "B" grades in Puslinch. I'm meeting with staff in July to discuss our overall watershed conditions and we'll start getting into the specifics, the challenges and the overall solutions at that time. The above is a general answer to why some scores are lower in some areas.

So, my thoughts are that Puslinch and its' citizens are doing a great job in ensuring that the ecological health of its area – its subwatersheds – are in good condition and always improving.

I hope this helps and I hope that you'll be able to pass this info onto the Mayor and Council. Also, please pass my thanks onto them as well for welcoming us to Council. It was a great pleasure, as always, to come and speak to Puslinch Council.

If there are any other questions, please feel free to contact me. Thanks,

kathy

Katherine J. Menyes
Director, Watershed Management Services
Conservation Halton
2596 Britannia Road, Burlington ON L7P 0G3
905-336-1158, ext. 228
kmenyes@hrca.on.ca