



Photo Credit David Galbraith

Bringing **2020** into Focus

From Harbour...
...to Watershed



Hamilton Harbour
Remedial Action Plan
July 2013

Canadian and U.S. Areas of Concern in the Great Lakes–St. Lawrence River Basin



- Legend**
- Canadian AOCs
 - ★ Delisted Canadian AOCs
 - ▲ Canadian Areas in Recovery
 - ◆ Binational AOCs
 - U.S. AOCs
 - ★ Delisted U.S. AOC
 - ▲ U.S. Area in Recovery



2022

2021

2020

2019

2018

2017

2016

2015

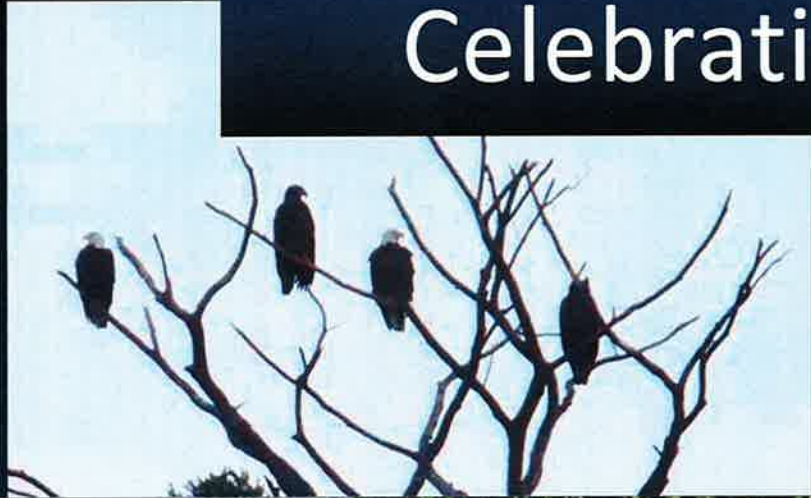
2014

2013

2012 RAP Stakeholder Forum



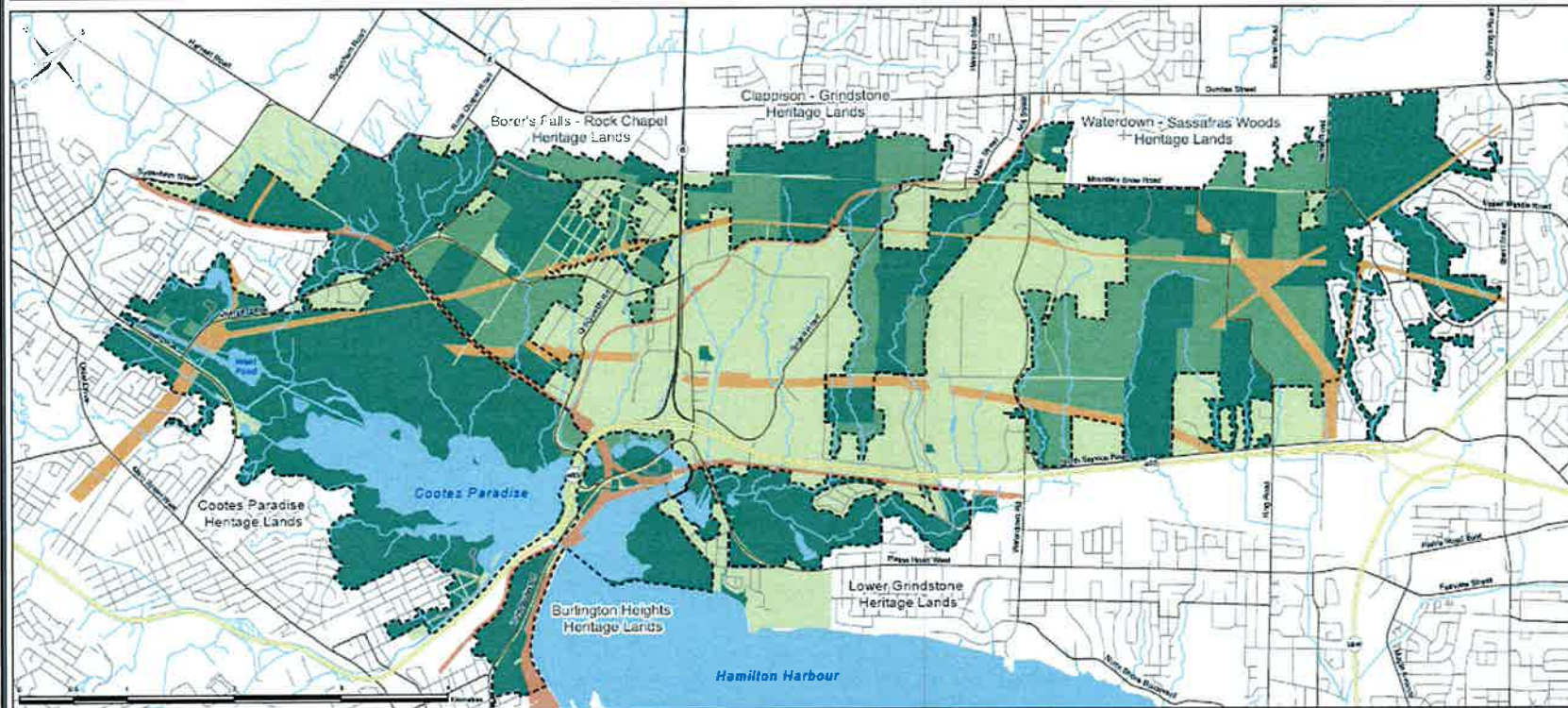
Celebrating the Harbour



Celebrating the Harbour

Cootes to Escarpment EcoPark System Vision Map

June 2013



Legend

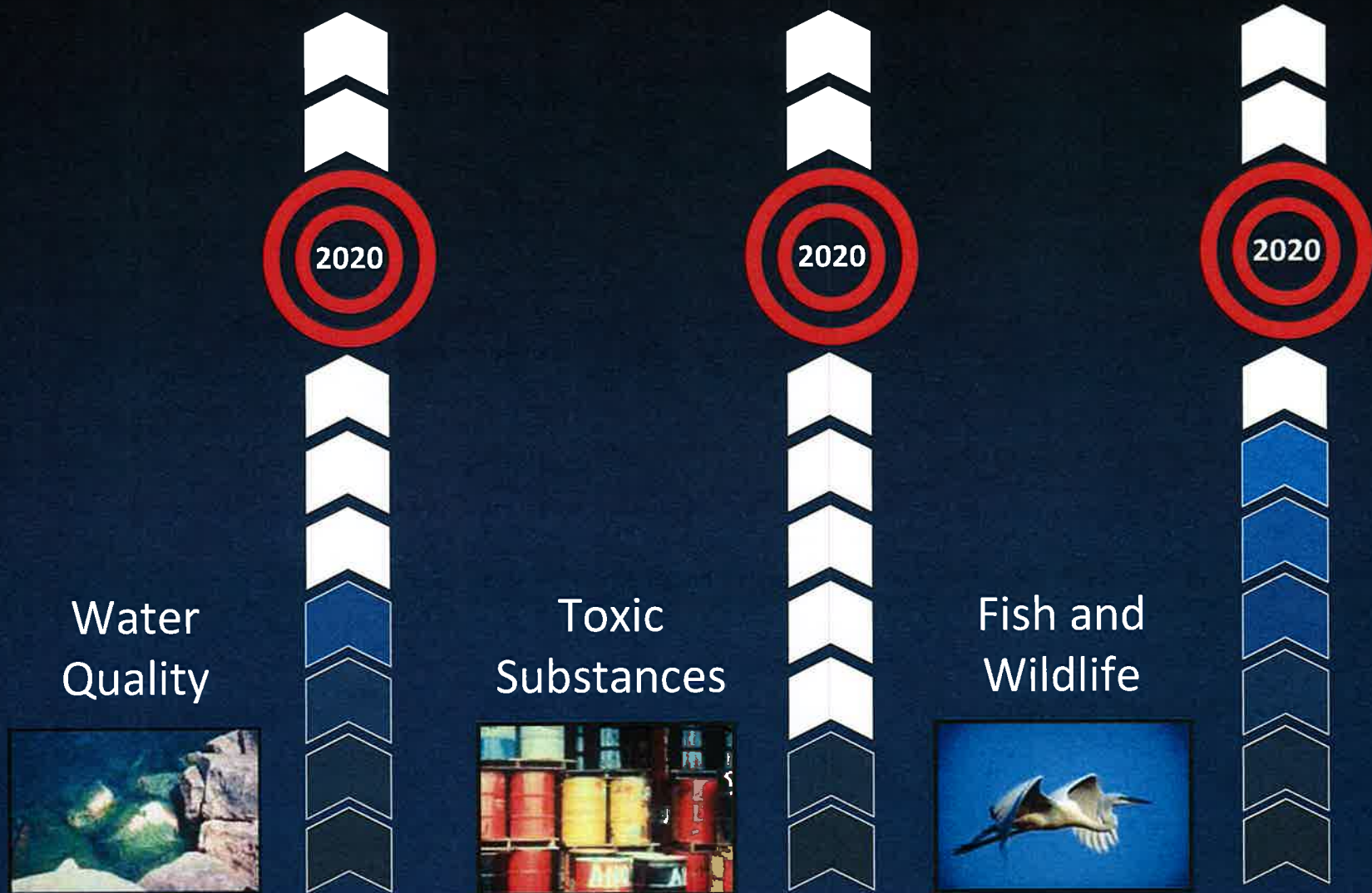
- | | | |
|--|---|---|
|  Current EcoPark Lands |  Heritage Lands Boundary |  Freeway |
|  Potential Additional EcoPark Lands |  Hydro Corridor |  Highway |
|  Complimentary Stewardship Lands |  Railway Corridor |  Arterial / Collector Road |
| | |  Local Street |



Royal Botanical Gardens - Conservation Halton - Hamilton Conservation Authority - Hamilton Naturalists Club
City of Burlington - City of Hamilton - Region of Halton - Bruce Trail Conservancy - McMaster University

This mapping is produced by Conservation Halton and should be used for information purposes only. The data displayed are derived from sources with varying accuracies and all boundaries should therefore be considered approximate. Data on this map is used under license with the Hamilton Conservation Authority, Ontario Ministry of Environment, Ontario Ministry of Natural Resources, Ontario Geological Survey, City of Hamilton, Region of Halton, Parajet Enterprises Inc. and other agencies.
© Copyright 2013 Queen's Printer for Ontario.

Status of the Harbour



Race to the Finish

Phosphorus and Toxics



Ready...

2014
\$140 m

Randle Reef



Set...

2014 – 2018

\$330 m

Woodward
WWTP



GO!

2014 Start
\$150 m

Skyway
WWTP



Phosphorus Loading in the Harbour

80 ug/l

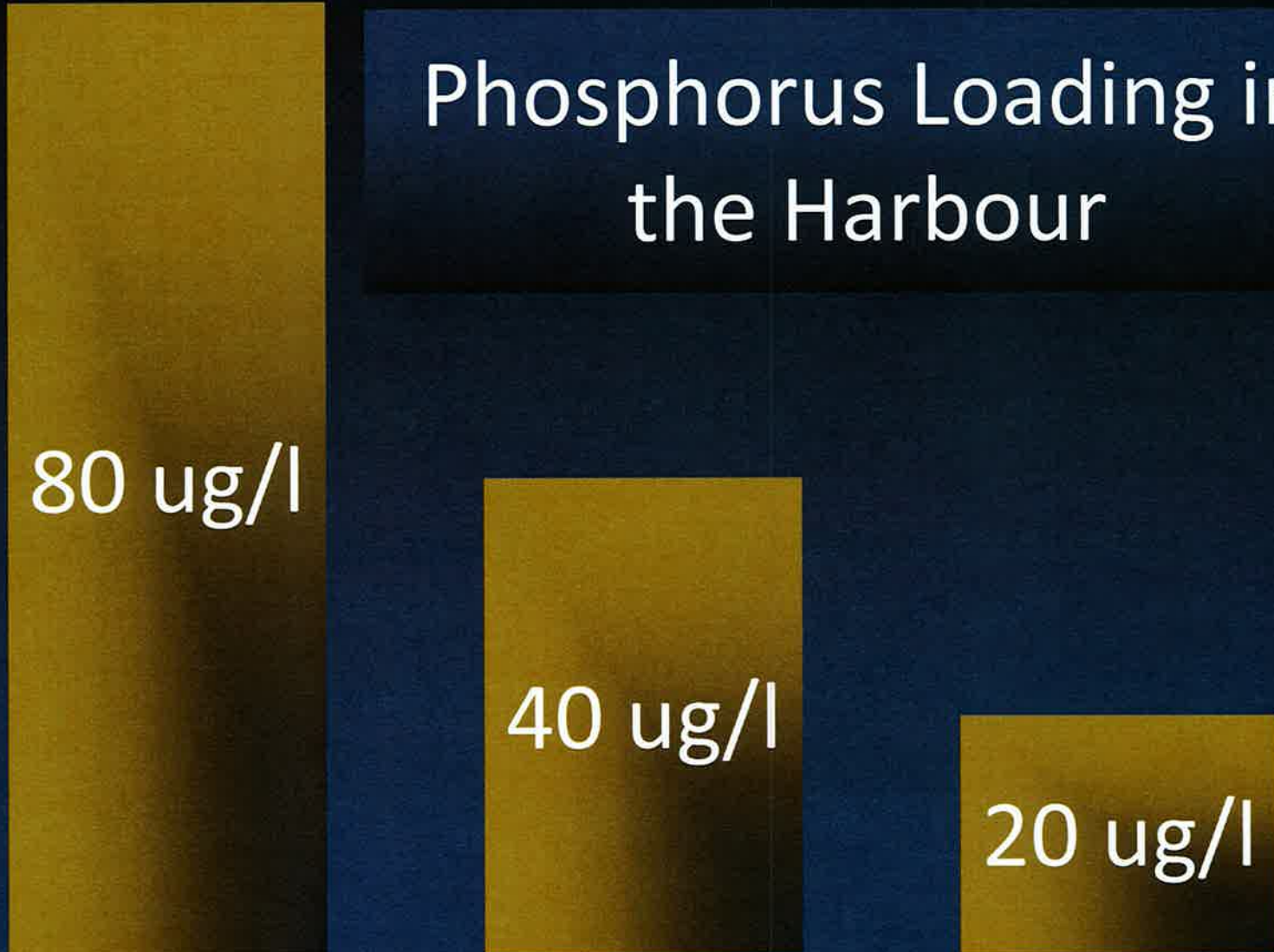
Initial

40 ug/l

Current

20 ug/l

Target



Flow Ratio to the Harbour



WWTPs = 50%

Watersheds = 50%

... To the Watershed



- Climate Change
- Phosphorus pulses from storms

Challenges



Next Actions

Reduction of
Phosphorus and
Sediment

through:

Low Impact
Development (LID)

Storm Water
Management (SWM)

Construction Site
Sediment Control



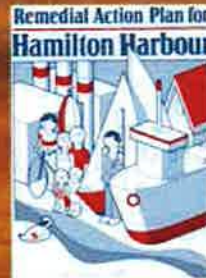
PARTNERSHIPS IN ACTION FOR SUCCESS



Hamilton



ROYAL BOTANICAL GARDENS



Fisheries and Oceans

Pêches et Océans

Environment Canada

Environnement Canada



BAY AREA RESTORATION COUNCIL



Hamilton-Halton Home Builders' Association



**BAY AREA
RESTORATION
COUNCIL**

BARC

- Represented the public interest in the RAP since 1991
- Mandate:
 - Promote, monitor and assess implementation of the RAP
 - Promote protection and appreciation of the Harbour watershed ecosystem;
 - Assess and enhance public awareness and understanding of the status of Hamilton Harbour and its watershed;
 - Promote and develop public information and education programs;
 - Provide advice and information to relevant government bodies in support of restoration plans; and
 - Collaborate with other organizations and individuals

Adopt A Creeks 2013



- Activities:
 - Garbage clean ups
 - Invasive species pulls
 - Plantings
 - Shoreline stabilization
- 2 events (so far)
- 40 participants
- 320 pounds of litter removed
- 63 shrubs planted

Classroom Mini Marsh 2013



- 275 classes
- 73 teachers attended the workshop
- Rooted marsh plants, a bowl, gravel and a snail
- At the end of the school year the plants can be returned for planting in Cootes Paradise marsh



Marsh Volunteer Plantings 2013



- 3 events
- 2100 cattails
- 36 volunteers



Stream of Dreams 2013



- Environmental studies and visual arts
- 3 schools
- 1100 student participants
- 90 teachers and adult volunteers



Yellow Fish Road 2013

- Connection between home and Harbour
- 8 events
- 180 participants
- 38 adult volunteers



2013 Waterfront Outreach



Water School, Mini Invert Lab



- **Water School**, 4 events with 117 participants
- **Multicultural Waterfest**, 70 participants
- **Mini Invertebrate Labs**, 3 events with 209 participants

Towards Safe Harbour 2013 and beyond



2012 **Toward Safe Harbours**
Report Card



- 2012 Report Card: overall restoration performance has improved
- Significant challenges remain
- 2013: renewed focus on sustainable stormwater management