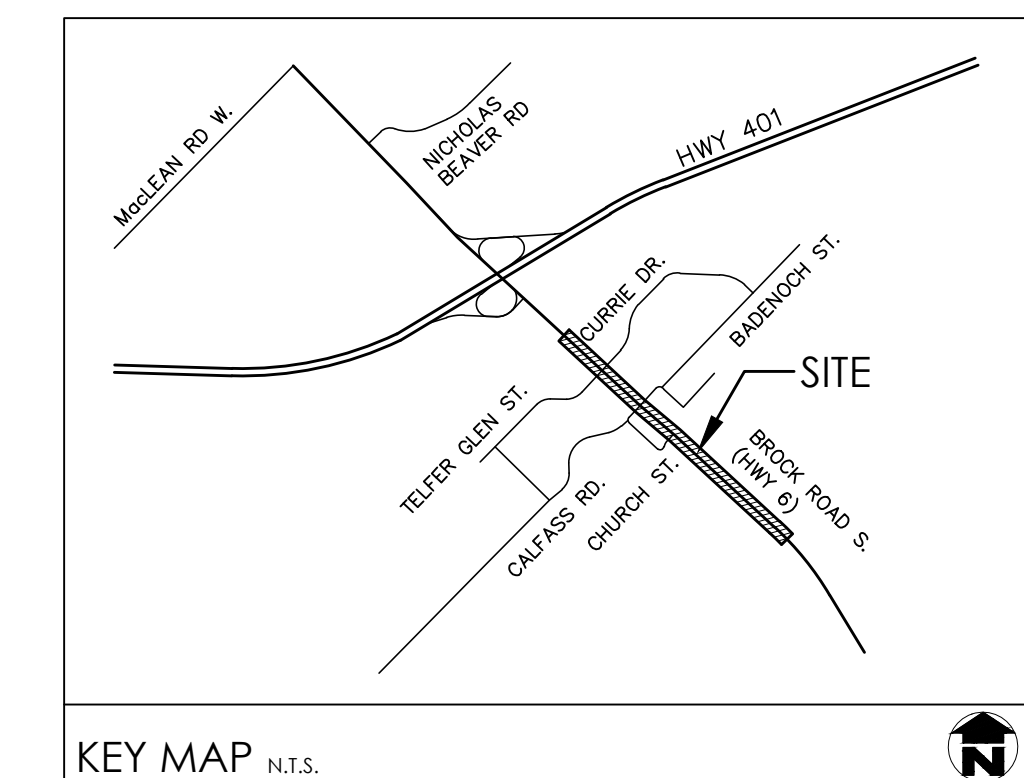
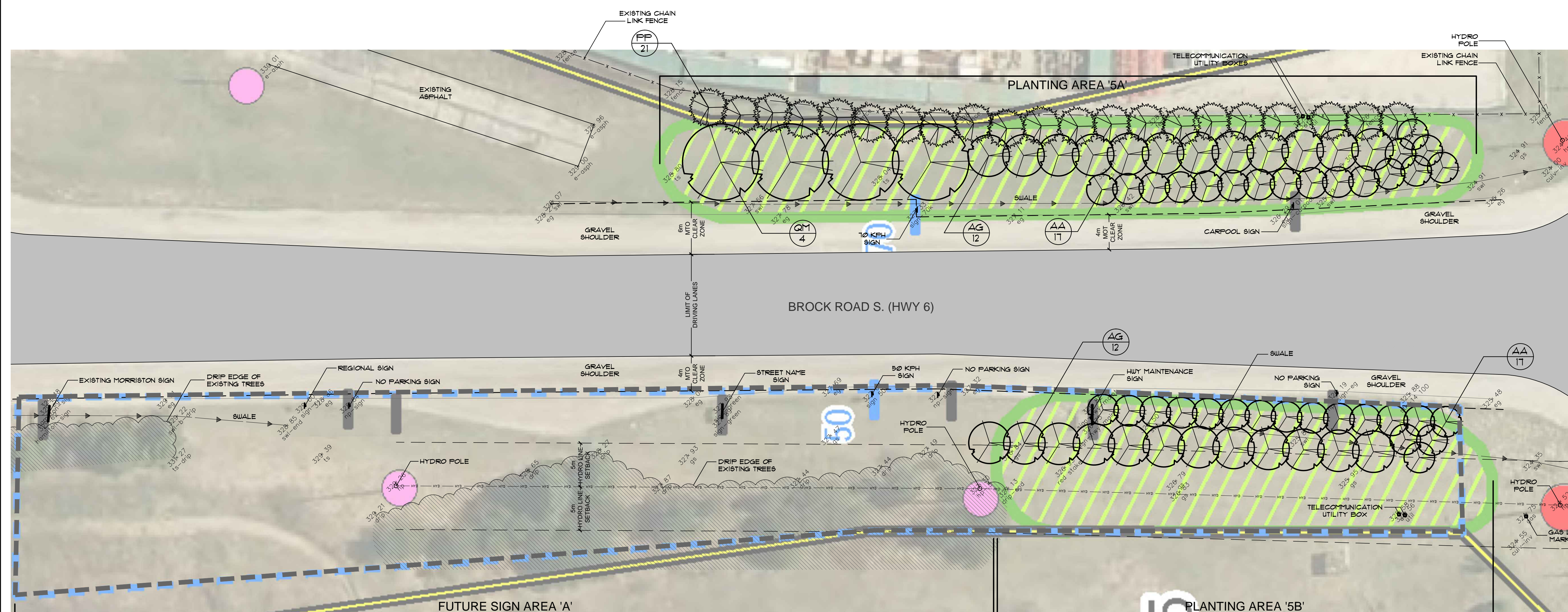


PLANT MATERIAL LIST (SHEET L1 ONLY)					
KEY	QUANT.	BOTANICAL NAME	COMMON NAME	SIZE	COND.
AA	34	<i>Amelanchier x grand.</i> 'Autumn Brilliance'	Autumn Brilliance Serviceberry	50mm cal	W.B.
AG	24	<i>Acer glabra</i> 'Flame'	Flame Anur Maple	60mm cal	W.B.
FP	21	<i>Picea pungens</i>	Colorado Spruce	150cm	W.B.
QM	4	<i>Quercus macrocarpa</i>	Bur Oak	60mm cal	W.B.

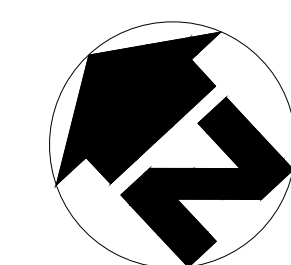
HYDRO ONE PLANTING DESIGN STANDARDS:	
DISTANCE FROM CENTERLINE OF OVERHEAD HYDRO LINES TO STEM OF TREE	MAXIMUM MATURE HEIGHT OF TREE
0m - 5m	3m (SHRUB)
5m - 8m	8m
8m OR MORE	NO HEIGHT RESTRICTION

MTO CLEAR ZONE	
SPEED LIMIT	MIN CLEAR ZONE (DISTANCE FROM EDGE OF TRAVELED PORTION OF ROAD)
50 kph	4m
70 kph	6m



## GENERAL NOTES

1. ALL WORKSMANSHIP WILL BE TO THE STANDARDS OF LANDSCAPE ONTARIO.
2. ALL PLANT MATERIAL TO BE NO.1 GRADE NURSERY GROWN IN ACCORDANCE WITH THE CANADIAN STANDARDS FOR NURSERY STOCK, 6TH EDITION, 1998, BY THE CANADIAN NURSERY TRADES ASSOCIATION.
3. BACKFILL WILL CONSIST OF SOIL NATIVE TO THE SITE OR GENERAL SOIL TYPE, 100% NATIVE TO THE SITE. TOPSOIL TO BE TESTED FOR NUTRIENT VALUE, AND AMENDED FOR OPTIMAL GROWTH AS PER THE RECOMMENDATIONS OF THE SOIL TEST.
4. CONTRACTOR SHALL MAINTAIN ALL LANDSCAPE AREAS UNTIL OWNER'S ACCEPTANCE OF PROJECT.
5. CONTRACTOR TO LOCATE ALL UNDERGROUND UTILITIES.
6. PLANTING MAY BE ADJUSTED TO SUIT LOCATIONS OF SITE UTILITY STRUCTURES/SERVICES.
7. ALL MATERIALS MUST BE APPROVED BY LANDSCAPE ARCHITECT PRIOR TO INSTALLATION.
8. SPREAD MULCH TO A MINIMUM OF 100mm COMPACTED DEPTH ON ALL TREE PITS AND PLANTING BEDS.
9. CHECK AND VERIFY ALL DIMENSIONS AND QUANTITIES PRIOR TO COMMENCEMENT OF WORK. ANY DISCREPANCIES ARE TO BE REPORTED IN WRITING TO THE LANDSCAPE ARCHITECT. QUANTITIES NOTED WITHIN THE PLAN SUPERCEDE THOSE IN THE PLANT LIST. ANY SUBSTITUTIONS SHALL BE APPROVED BY THE LANDSCAPE ARCHITECT.
10. 80D AS MARKED WITH NURSERY 80D ON A MINIMUM OF 100mm OF CLEAN TOPSOIL. FINE GRADE AND 80D ALL BOULEVARD AREAS TO MUNICIPAL SPECIFICATIONS AND REPAIR DAMAGE TO ADJACENT PROPERTIES, AS REQUIRED.
11. FINAL INSPECTION AND ACCEPTANCE OF PLANTING WORK SHALL COINCIDE WITH THE FINAL INSPECTION AND ACCEPTANCE OF ALL WORK INCLUDED IN THE CONTRACT.
12. ALL SEEDED SLOPES 3:1 AND GREATER TO RECEIVE EROSION CONTROL MATTING. PIN 80D ON ALL SLOPES OF 3:1 OR GREATER.
13. SUBMIT A WRITTEN GUARANTEE TO THE EFFECT THAT ALL PLANTS SURVIVED DURING THE PERIOD OF JANUARY 1st TO JULY 15th SHALL BE GUARANTEED UNTIL JULY 15th THE FOLLOWING YEAR. PLANTS ACCEPTED DURING THE PERIOD OF JULY 15th TO DECEMBER 31st SHALL BE GUARANTEED FOR ONE YEAR FROM THE DATE OF ACCEPTANCE. THE GUARANTEE PERIODS LISTED ABOVE SHALL APPLY TO ALL "NURSERY GROWN" PLANTS.
14. AT THE TIME OF FINAL INSPECTION ALL PLANTS SHALL BE IN A HEALTHY, VIGOROUS GROWTH CONDITION, PLANTED IN FULL ACCORDANCE WITH DRAINAGES AND CONDITIONS.
15. BASE INFORMATION AS PER MACKINNON 4 ASSOCIATES FIELD PICKUP, DECEMBER 5, 2013 AND COUNTY OF WELLINGTON G/8 MAGERY MAY 2013.



2.	FEB.7.14	As Per Client Comment	BK
1.	JAN.20.14	For review	BK
no.	date	description	by

Morrison Community Streetscape  
Puslinch Township

## Landscape Plan

MacKinnon &  
Associates

Providing Solutions in Urban,  
Landscape and Environmental Planning

550 Parkside Drive, Unit A-21, Waterloo, Ontario N2L 5V4  
Tel. (519) 725-5140 FAX (519) 725-5144

DRAWN BY: BKM	DESIGNED BY: BKM	APPROVED BY: AWH
PROJECT NO. 2013-58	SCALE: 1:250	DATE: December 2013
PLOTTED: February 7, 2014	SHEET: 11	