

Township of Puslinch

Feasibility Study for Municipal Water and Sewage Servicing

Public Information Centre

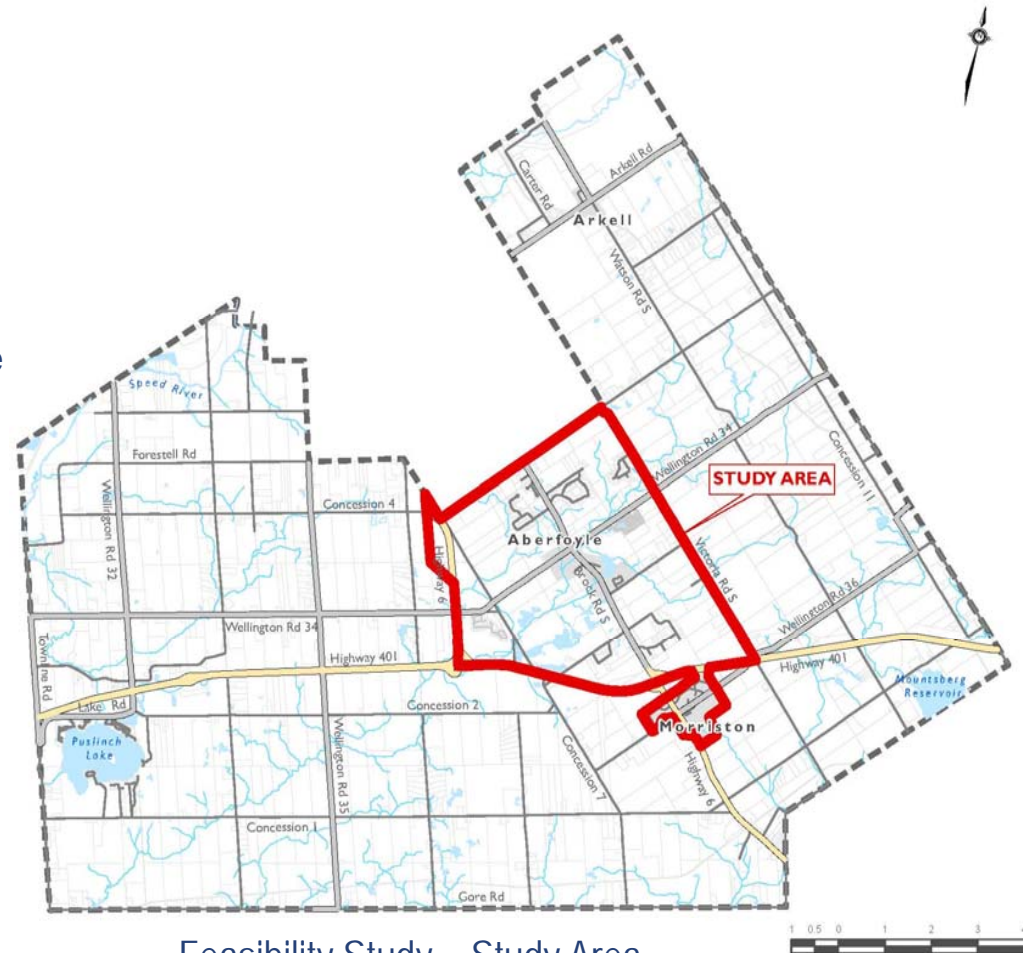
Location: Puslinch Community Centre
23 Brock Road South, Puslinch
6:30 p.m. to 8:30 p.m.

March 22, 2018



Why are we here?

- + The Township is undertaking a Feasibility Study to assess the viability of implementing municipal water and sewage servicing within key areas (see map).
- Preliminary analysis includes servicing of entire study area. However, final analysis may result in a smaller service area (e.g., urban areas only)
- + The Township is an attractive place for development; however, lack of municipal servicing limits opportunities for growth.
- + The Feasibility Study will provide the basis for proceeding (or not proceeding) with any further Studies and Public Consultation that will be necessary before implementing ANY municipal water or sewage servicing solution.



Feasibility Study – Study Area

What is the Purpose of this Meeting?

- + This meeting provides the public with the opportunity to:
 - Understand why the Township is undertaking this study and the scope of the study
 - Review the high-level water and sewage servicing options being considered
 - Review the key advantages and disadvantages identified for each servicing option
 - Learn about the results obtained from the Municipal Servicing Questionnaire distributed within the study area
 - Review and discuss the study with Township staff and their consultants, and any questions you may have related to the study

Preliminary Residential and Employment Projections

Projected Residential Growth – Aberfoyle and Morriston:

Urban Centre	Projected Growth / Planning Period		
	2016	2036	2041
Aberfoyle ¹	325	345	335
Morriston ¹	480	590	620

Notes:

1. Projected Residential Growth as per Wellington County Official Plan May 6, 1999 (Last Revision September 1, 2016). Includes the net undercount adjustment which is estimated at approximately 4.1%.

Projected Employment Growth – Township of Puslinch:

Urban Centre	Projected Growth / Planning Period		
	2016	2036	2041
Puslinch – Total Employment ¹	4,017	5,161	5,632

Notes:

1. Projected Employment Growth as per Wellington County Official Plan May 6, 1999 (Last Revision September 1, 2016). Includes 'no fixed place of work' employment.

What Servicing Options have been Considered?

High-level servicing options developed for consideration in the Feasibility Study include:

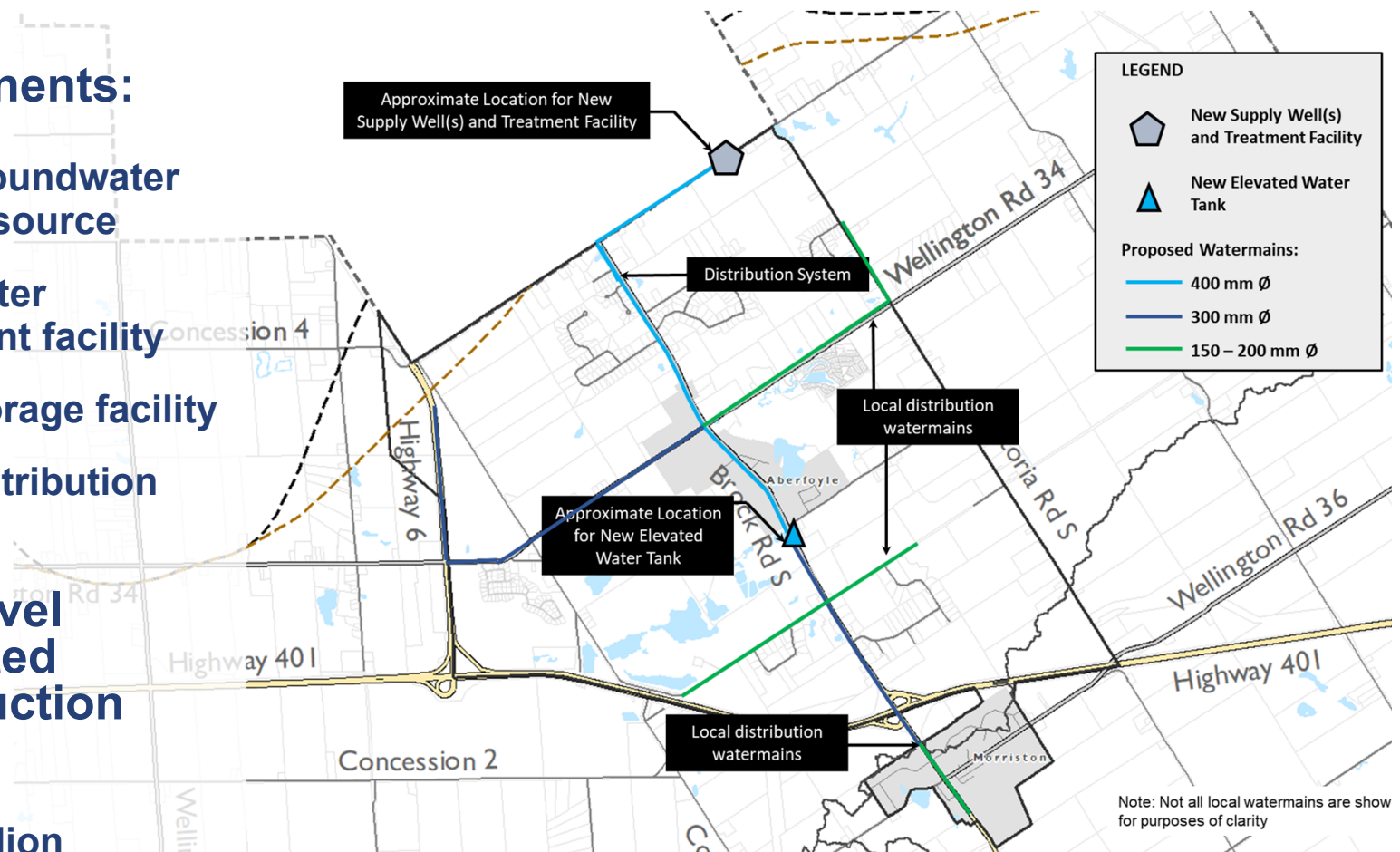
- + Intra-Municipal Servicing – Servicing to be provided solely by the Township**
 - New municipal water system consisting of new well(s), treatment facility, storage, pumping and distribution
 - New municipal sewage system consisting of new pumping station(s), treatment and conveyance system

- + Inter-Municipal Servicing – Servicing to be provided jointly by Township and neighbouring municipality (i.e., City of Guelph)**
 - Connection to City of Guelph water supply and distribution system
 - Connection to City of Guelph sewage collection and treatment system

High-level Water Servicing Options – Intra-Municipal

Option 1: Intra-Municipal Servicing

- + **Major components:**
 - New groundwater supply source
 - New water treatment facility
 - New storage facility
 - New distribution system
- + **High-level estimated construction cost:**
 - 34.3 Million



High-level Water Servicing Options – Inter-Municipal

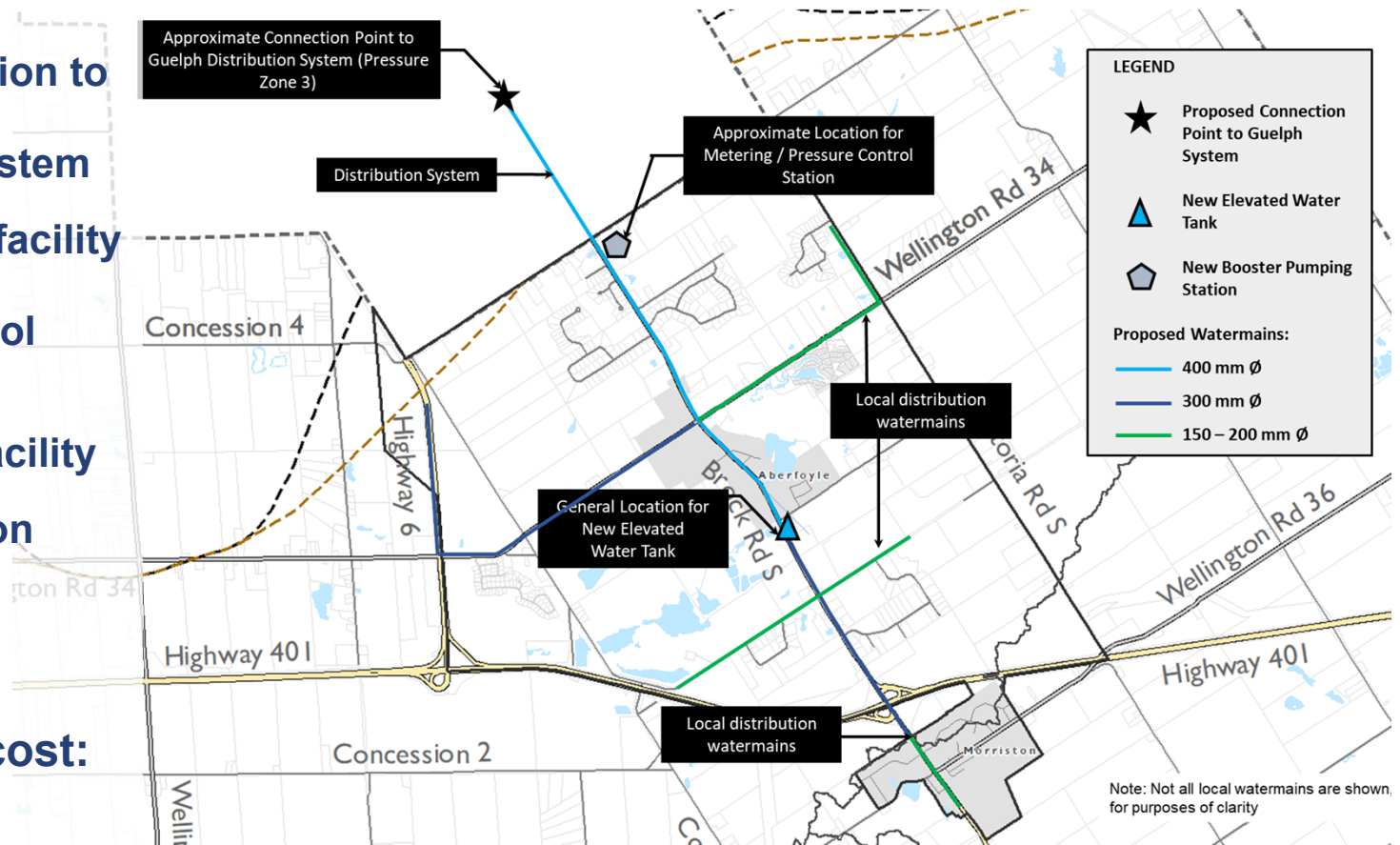
Option 2: Inter-Municipal Servicing

+ Major components:

- Direct connection to City of Guelph distribution system
- New metering facility and potential pressure control station
- New storage facility
- New distribution system

+ High-level estimated construction cost:

- 29.6 Million



Preliminary Assessment of High-Level Water Servicing Options

Option	Key Advantages	Key Disadvantages
Option 1: Intra-Municipal Water Servicing	<ul style="list-style-type: none"> • Completely independent system – greater local control 	<ul style="list-style-type: none"> • Higher capital, O&M and Life Cycle Cost • Requires larger amount of new infrastructure
Option 2: Inter-Municipal Water Servicing (through City of Guelph)	<ul style="list-style-type: none"> • Lower capital, O&M and Life Cycle Cost • Optimizes use of existing infrastructure (within Guelph) • Guelph has a proven track record of providing high quality drinking water • Economy of scale may be realized with Joint Supply system • May improve opportunities for funding assistance with joint Projects • Bulk water rates may be set, thereby establishing more predictable O&M costs 	<ul style="list-style-type: none"> • Upgrades to infrastructure in the City may be required – cost unknown at this time and may be significant • Bulk water supply rates are unknown at this time • Need for an inter-municipal servicing agreement (Guelph & Puslinch)
Common to both Options	<ul style="list-style-type: none"> • Municipal water and sewage servicing encourages developers to invest and promote growth in the Township • Amendments to Official Plan and Secondary Plans may be required • Existing private and communal wells to be decommissioned • Cost of extending private water service and connection to existing plumbing is in addition to the estimated costs 	



Small, faint text arranged in a circular pattern on the left side of the slide.

Small, faint text arranged in a circular pattern on the right side of the slide.

High-Level Sewage Servicing Options

High-level Sewage Servicing Options – Intra-Municipal

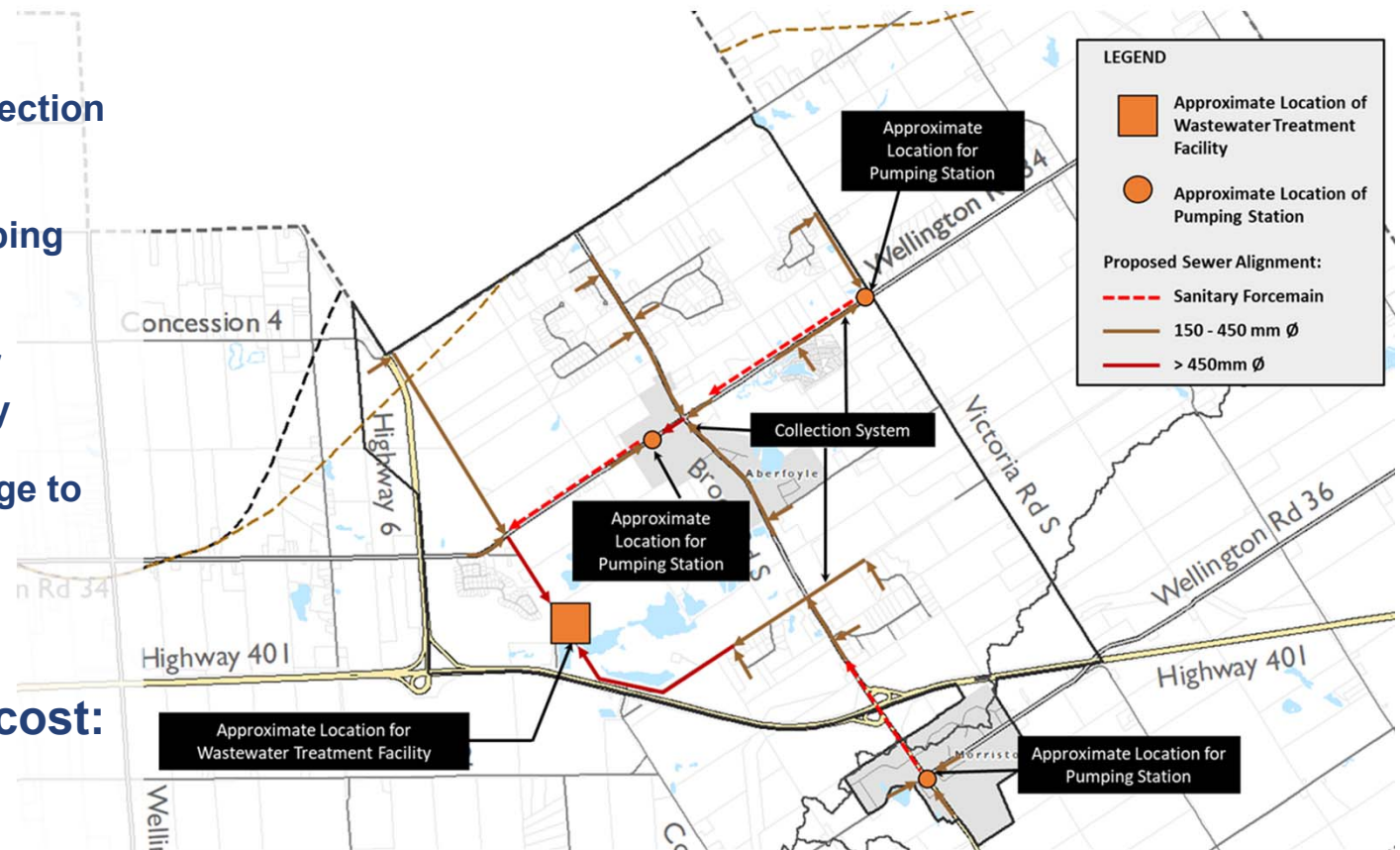
Option 1: Intra-Municipal Servicing

+ Major components:

- New gravity collection system
- Three new pumping facilities
- New wastewater treatment facility
- Effluent discharge to Mill Creek

+ High-level estimated construction cost:

- 66.6 Million



High-level Sewage Servicing Options – Inter-Municipal

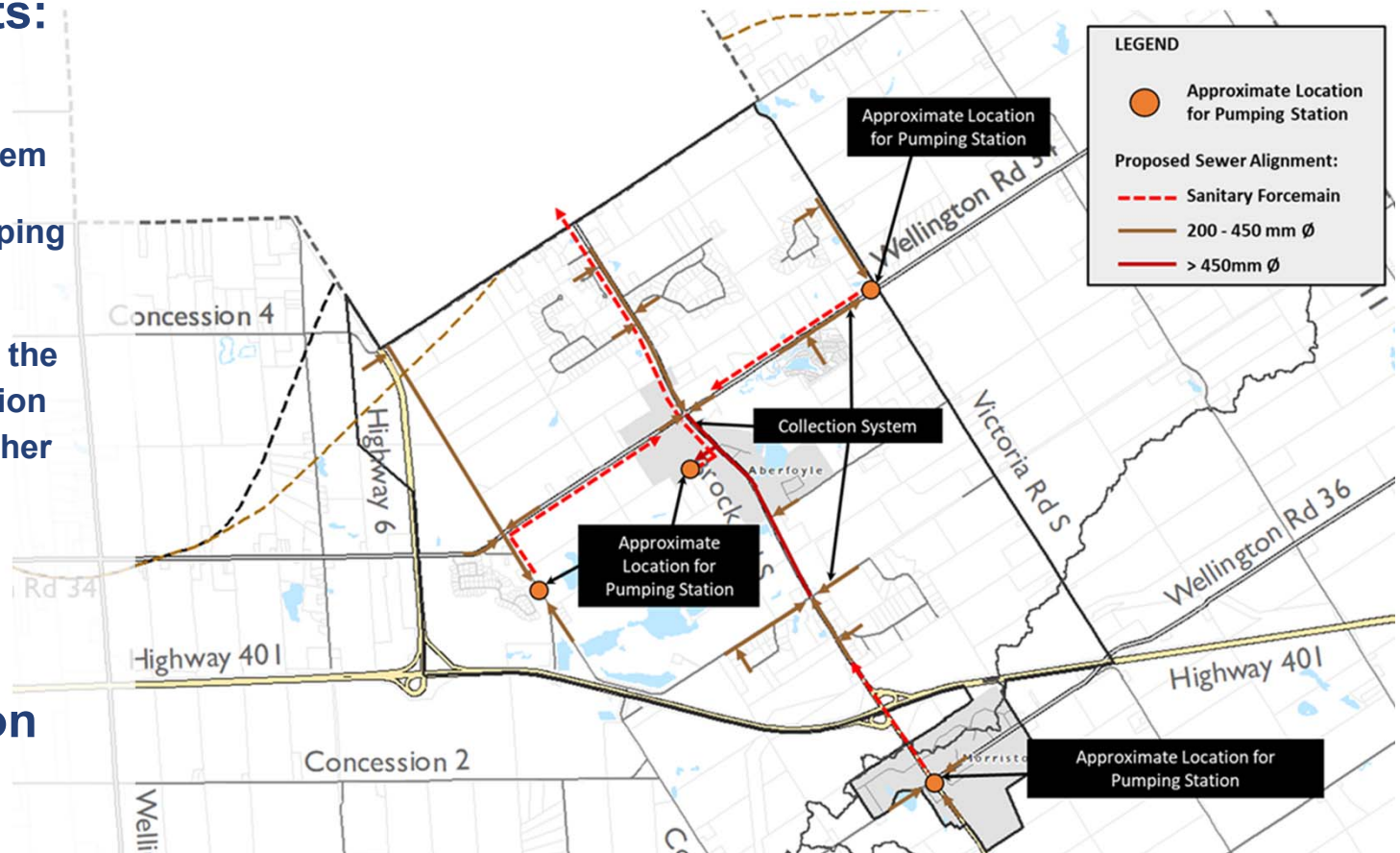
Option 2: Inter-Municipal Servicing

+ Major components:

- New gravity collection system
- Four new pumping facilities
- Discharge into the Guelph collection system for further treatment and disposal

+ High-level estimated construction cost:

- 43.5 Million



Preliminary Assessment of High-Level Sewage Servicing Options

Option	Key Advantages	Key Disadvantages
Option 1: Intra-Municipal Sewage Servicing	<ul style="list-style-type: none"> • Completely independent system – greater local control for Puslinch residents 	<ul style="list-style-type: none"> • Highest capital, O&M and Life Cycle Cost • Requires larger amount of new infrastructure in Puslinch • Assimilative capacity of receiving stream may be a limiting factor – alternate discharge location or higher quality effluent may be needed – cost implication
Option 2: Inter-Municipal Sewage Servicing (through City of Guelph)	<ul style="list-style-type: none"> • Lower capital, O&M and Life Cycle Costs • Lower operational requirements for the collection system • Economy of scale may be realized with Joint Wastewater Treatment system • Provides an opportunity for Joint Funding applications • Known wastewater rates will assist in establishing predictable O&M budgets 	<ul style="list-style-type: none"> • Upgrades to infrastructure in the City may be required – cost unknown at this time and may be significant • Need for an inter-municipal Servicing Agreement (Guelph & Puslinch)
Common to Both Options	<ul style="list-style-type: none"> • Municipal water and sewage servicing encourages developers to invest and promote growth in Township • Amendments to Official Plan and Secondary Plans may be required • Existing private and communal waste disposal systems to be decommissioned • Cost of Private building drain construction is in addition to the estimated costs 	



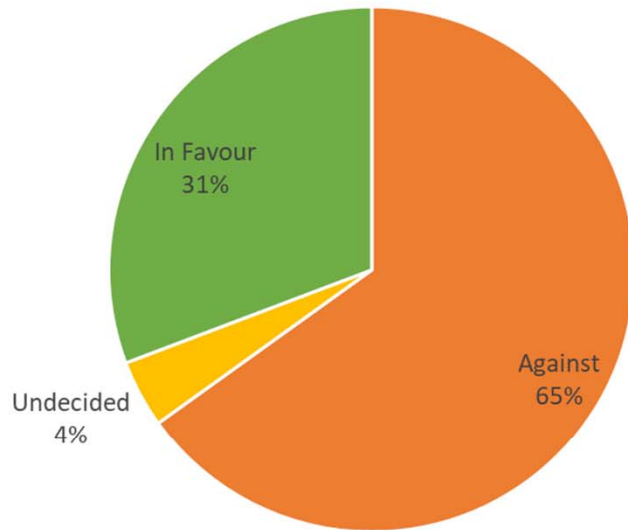
Placeholder text for the left side of the page, consisting of multiple lines of small, illegible text.

Municipal Questionnaire – Survey Results

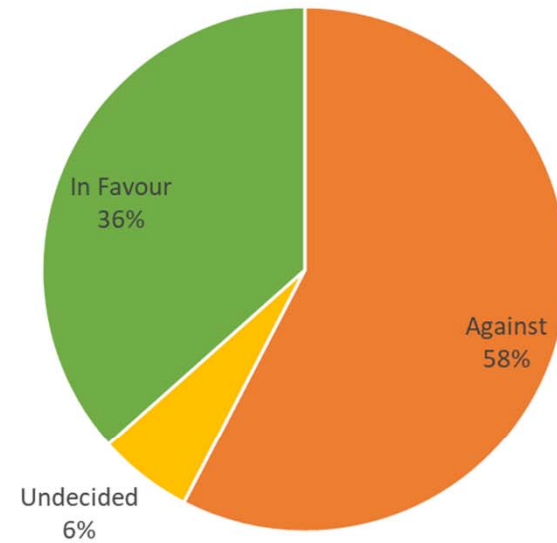
Placeholder text for the right side of the page, consisting of multiple lines of small, illegible text.

Questionnaire – Combined Results (Residential & ICI)

Municipal Water Servicing



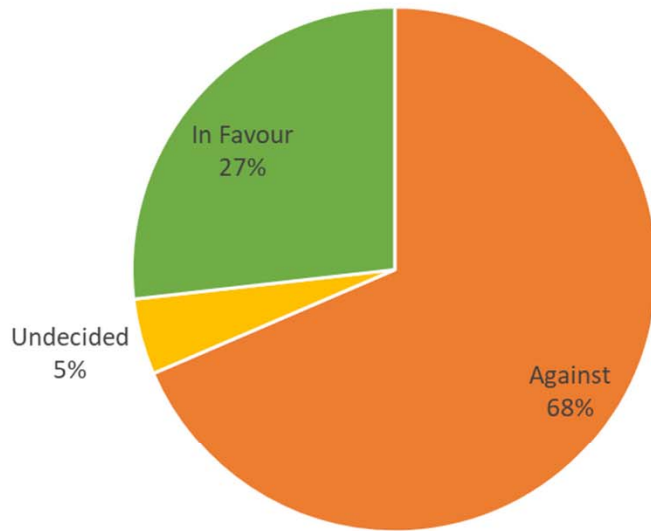
Municipal Sewage Servicing



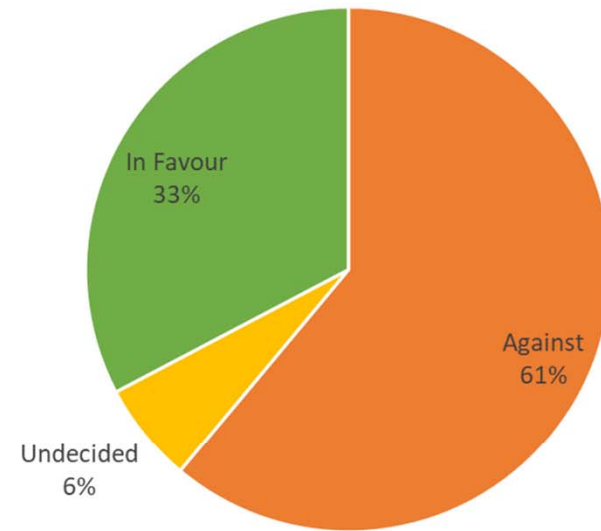
Total Number of Surveys Received: 361

Questionnaire – Residential Results

Municipal Water Servicing



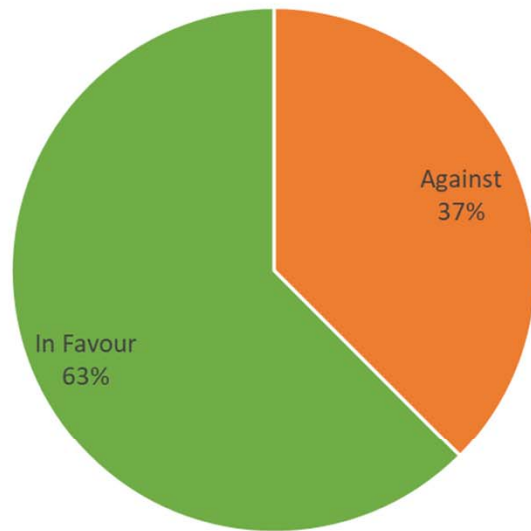
Municipal Sewage Servicing



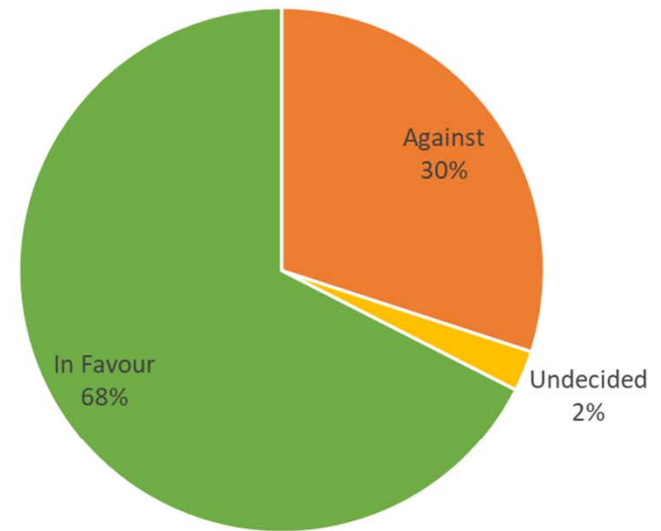
Number of Residential Surveys Received: 321

Questionnaire – ICI Results

Municipal Water Servicing



Municipal Sewage Servicing



Number of ICI Surveys Received: 40

April 2018

- Received comments from this Public Meeting
- Finalize Feasibility Study Report

Spring /
Summer
2018

- Council Approval of Decision (i.e., to proceed with further Study or not to proceed with further Study)

2019 – 2021

- Class EA Study Completion (subject to Council approval and budget allocation)

* Dates are preliminary and subject to change

