

6.1(a)



Environmental Consulting since 1979

RECEIVED

JUN 19 2013

Township of Puslinch

Al Murray  
Ontario Ministry of Natural Resources,  
1 Stone Rd. West, Guelph,  
Ontario, Canada  
N1G 4Y2  
Phone: 519-826-4927  
Fax: 519-826-4929.

CLERK'S DEPARTMENT	
TO	<i>AD. GS.</i>
Copy	
Please Handle	
For Your Information	
Council Agenda	<i>upon receipt of am.</i>
File	<i>✓</i>

June 14, 2013

ATTN:

RE: Monitoring Report CBM - St Mary's Cement McMillan Pit (License#5737)

Dear Mr. Murray,

We are pleased to submit the present report in compliance with the reporting requirements for the CBM - St Mary's Cement - McMillan Gravel Pit as per the "Monitoring Program -McMillan Property" submitted to your office on January 15, 1998 and modified with agreement from James Williams of your office on January 27, 2010.

Extraction ceased on the site in 2004 and in 2010 CBM requested and obtained a reduction of monitoring requirements from your office. Monitoring now required at this site is benthic macroinvertebrate sampling in tributary T3 and calculation of the water quality index based on BioMAP methodologies.

The analysis for 2012 includes data for the site from 1997 to 2012.

Extraction activities ceased on the site in 2004, thus 2005 to 2012 monitoring data represents post-extraction conditions.

If you have any questions, or require clarification, please do not hesitate to contact us.

Kind Regards,

Cathy Blott, B.Sc.  
Limnoterra Limited

### **Water Quality Rationale:**

Tributary 3 of Mill Creek is the nearest discharge point of groundwater crossing the pit site, and reflects the quality of groundwater discharging from the McMillan Pit (Figure 1). Water quality monitoring is based on an assessment of the benthic biota that Tributary 3 supports. The community of benthic biota is subject to the full rigor of the environment through the annual or biannual life cycles of the species. The community therefore represents the integrated temporal effects of all pollutants and environmental conditions through the year and not only those conditions at the time of sampling.

The composition of benthic macroinvertebrate communities reflects water and habitat quality in streams. BioMAP (Biological Monitoring and Assessment Program) is a water quality assessment tool designed for southern Ontario watercourses. It provides a quantitative measure of water quality that can be used to diagnose water quality at a site, monitor water quality over time, and evaluate the impact of point source and diffuse source pollution on water quality. The index calculated for a watercourse is based on sensitivity values assigned to each macroinvertebrate species. The sensitivity values are based on the species tolerance to factors of pollution. (organics, reduced dissolved oxygen, suspended solids, temperature, metals, acidity, nutrients etc)<sup>2</sup>.

### **Water Quality Methods:**

Benthic macro invertebrates were collected from Tributary T3 on October 26, 2012 (Figure 2). Two quantitative samples were collected from the site, downstream of Regional Side Road 20. A qualitative sample was taken from various types of habitat within the same general area, as samples T1 and T2, and included sampling from the small backwater area/wetland just upstream of Side Road 20. Sampling procedures followed the BioMAP protocols described in the BioMAP Report SWR-1<sup>1</sup> and have been outlined previously (refer to TCG McMillan Report 1996/1997). Aquatic Ecostudies Limited provided benthic identification services for the samples collected by Limnoterra staff.

### **Water Quality Analysis:**

The BioMAP analysis methodology was used to analyze the results and obtain a Water Quality Index for the Tributary (WQI). Sensitivity values from *Version 110430 Sensitivity Values for Aquatic Macroinvertebrates* of Ontario were used for the 2011 analysis. Sensitivity Values range from 4 to 0 which correspond to the longitudinal distribution of macroinvertebrates along the river continuum. A value of 4 designates species that typically inhabit small, groundwater fed, headwater creeks with a predominance of leaf and wood litter as the main energy source. A value of 3 corresponds to larger more open streams with solar radiation driving greater periphyton growth supporting species that feed on attached algae, and so on down to species ranked 0 that feed on fine particulate organic matter most abundant in turbid slow moving warm aquatic systems.

In the Mill Creek tributary T3 we expect to see a population dominated by species with ranks of 4 and 3 and a BioMAP analysis calculation of greater than 14 Water Quality Index (WQI).

Mean Sensitivity refers to the average sensitivity of the top 25% of the species collected. For Mill Creek we expect to see a Mean sensitivity above 3.

---

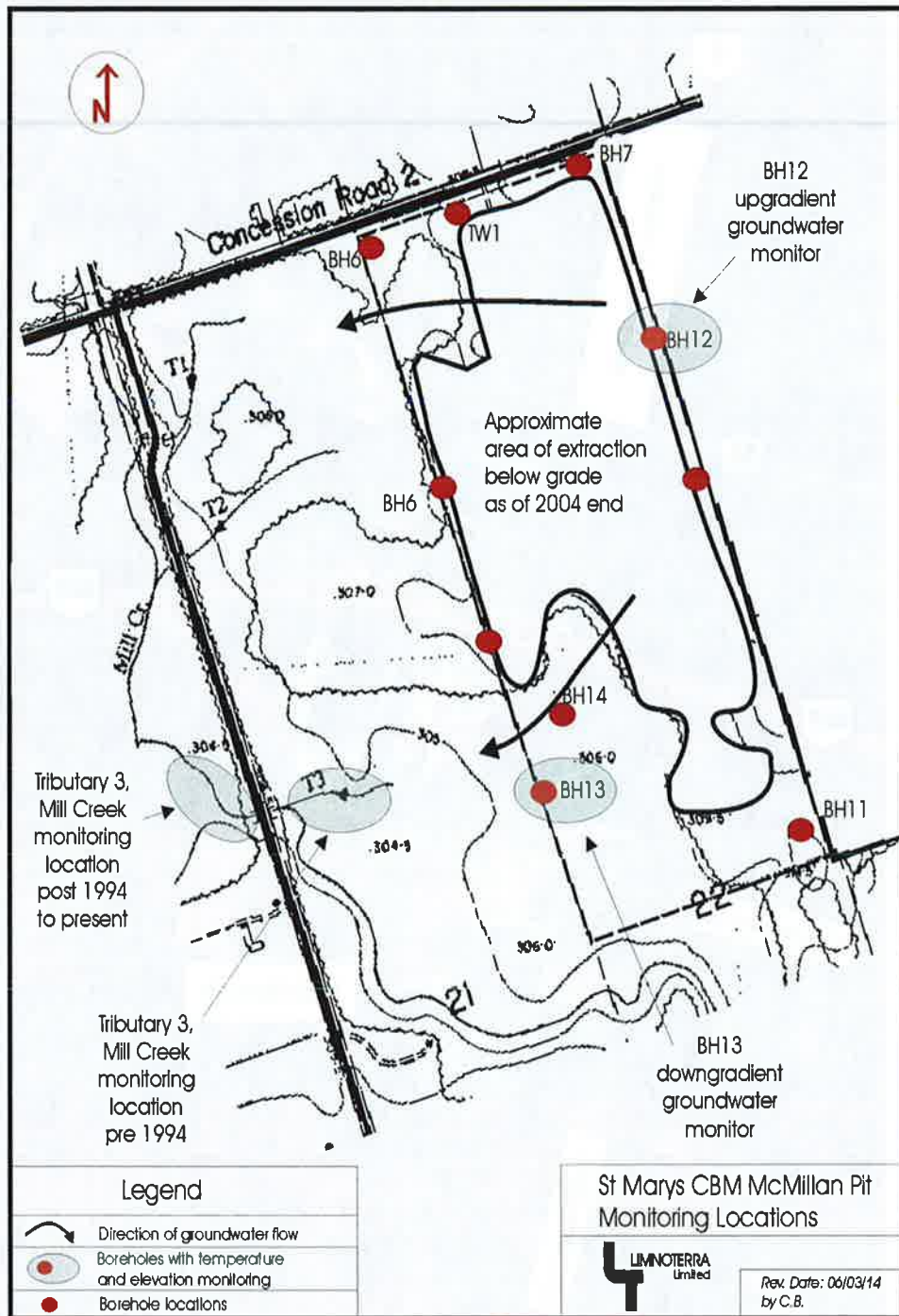
<sup>1</sup> Griffiths, R.W. 1993. BioMAP: Concepts, Protocols and Sampling Procedures for the Southwestern Region of Ontario. BioMAP Report SWR-1. Ministry of Environment and Energy, Southwestern Region, London, Ontario. The sensitivity values for the 2011 analysis were the updated version 110430.

Figure 1: McMillan Pit Location.





**Figure 2: Location of Tributary T3 benthic monitoring.**



### **Water Quality Proposed Trigger:**

WQI > 14 (i.e. unimpaired condition). No negative impacts to water quality have occurred from extraction when WQI > 14 for Tributary T3.

### **Water Quality Results:**

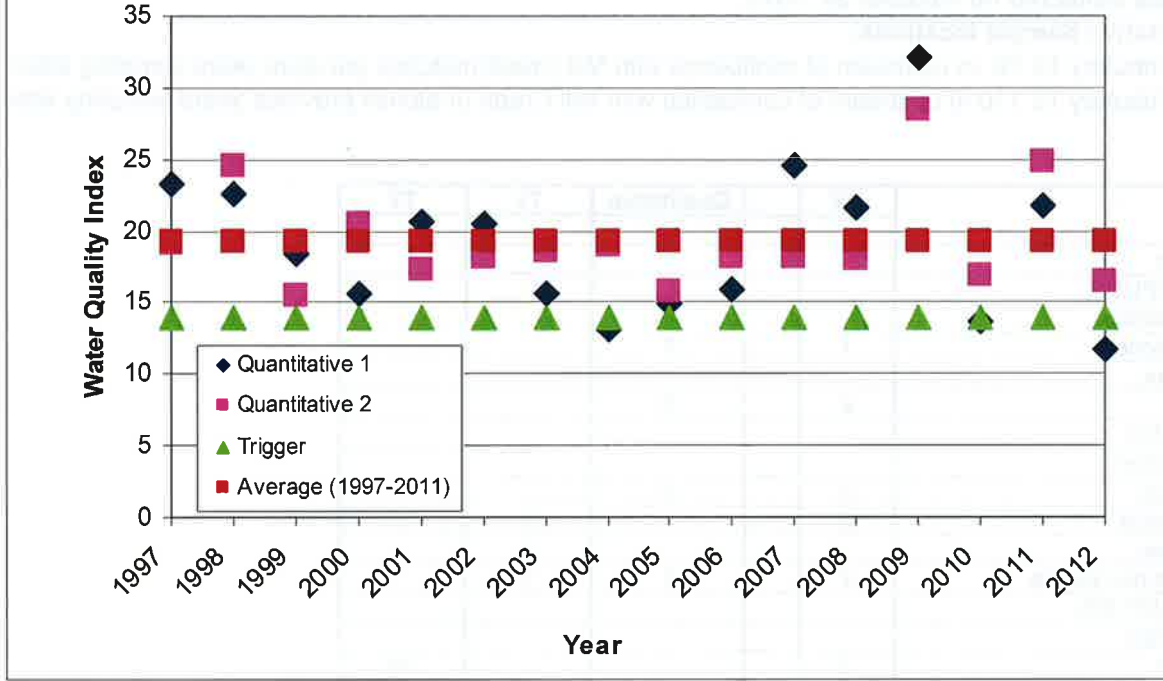
Results of the BioMAP analysis from 1997 – 2012 are tabulated in Table 1 and shown graphically in Figure 3. Results show the average WQI for 2012 is 14.1, just above the trigger of 14. The T1 value is 11.7 and the T2 sample value is 16.5. The species composition represents an unimpaired creek and is similar to previous years. For the first time in 2011, a third sample(T3) was collected in Tributary T3 closer to Mill Creek in the hopes of expanding the area available for sampling since the number of individuals per sample remains extremely low due to high sand contents of the bed material that limits available niches for benthic invertebrate production. However, the lower water quality index at that location suggests that it is more typical of the much larger Mill Creek waterway and that the sampling location selected is likely under the influence of Mill Creek flooding and is not representative of the tributary water quality. Therefore, no expansion of historical sampling is justified, and sampling in 2012 continued with just the original 2 locations only.

The species distribution in samples taken over the years at the site has changed very little; the types of organisms found in 2012 are similar to those found in previous years, and typical of a closed canopy, cool-to-cold water creek. The data therefore indicates there is no evidence of a significant species shift. However, the number of individuals, or the density, continued to be low up to and including the 2012 sampling and is likely due to a combination of repeated sampling within the same area and high percentage of sand in the stream bed that limits the amount of space individuals can occupy. Because of continued low density at the original sampling site, sampling locations is varied every year but still within the stretch of Tributary T3 downstream of Side road 20 and upstream of Mill Creek influences. The available habitat quality is high as indicated by the presence of highly sensitive species, however, density remains low due to high sand contents of the stream bed material which limits available space and thus density.

**Table 1: Benthic Analysis Results 1997 – 2012**

Sample	Date	Water Quality Index (WQI)	Qualitative Mean Sensitivity Value
Quantitative 1	10-29-97	23.34	3.67
Quantitative 2		19.12	
Quantitative 1	11-17-98	22.56	3.20
Quantitative 2		24.60	
Quantitative 1	11-23-99	18.47	3.50
Quantitative 2		15.52	
Quantitative 1	10-23-00	15.63	3.17
Quantitative 2		20.49	
Quantitative 1	11-06-01	20.6	3.20
Quantitative 2		17.3	
Quantitative 1	11-25-02	20.48	3.25
Quantitative 2		18.16	
Quantitative 1	10-28-03	15.6	3.33
Quantitative 2		18.5	
Quantitative 1	11-02-04	13.1	3.25
Quantitative 2		18.9	
Quantitative 1	10-24-2005	14.9	3.20
Quantitative 2		15.7	
Quantitative 1	08-11-2006	15.9	3.43
Quantitative 2		18.1	
Quantitative 1	08-14-2007	24.60	3.16
Quantitative 2		18.1	
Quantitative 1	08/28/08	21.6	4.00
Quantitative 2		18	
Quantitative 1	09/03/09	32.1	3.71
Quantitative 2		28.5	
Quantitative 1	10/27/10	13.6	3.29
Quantitative 2		16.9	
Quantitative 1	10/23/11	21.8	4.00
Quantitative 2		24.8	
Quantitative 1	10/26/12	11.7	3.25
Quantitative 2		16.5	
<b>1997 to 2012</b>		<b>19.2</b>	<b>3.41</b>
<b>Averages:</b>			

**Figure 3: St. Mary's CBM McMillan Pit BioMAP Water Quality Index Results (1997 to 2012)**



**Conclusion:**

For 2012 the average water quality index values remain above the trigger level of 14. While the value at the T2 site is below the previously calculated range of water quality values, the overall species composition continues to reflect the community collections of previous years. The mean sensitivity value for 2012 is 3.25 and the benthic community in Tributary 3 remains representative of a southern Ontario unimpaired creek. No negative impacts to water quality due to extraction activities have been detected in the 2012 sampling.

**Table 2: Quantitative Benthic Sampling Results 2012**

**Density of macroinvertebrates (No. per 0.05 sq. m.) collected from a tributary of Mill Creek, downstream of the CBM MacMillan Pit near Side Road 20, Puslinch Township**  
**Samples collected on October 26, 2012.**

**Quantitative Sample locations:**

T2 in Tributary T3 70 m upstream of confluence with Mill Creek(matches previous years sampling sites)

T1 in Tributary T3 110 m upstream of confluence with Mill Creek (matches previous years sampling sites)

	SV	Qualitative	T1	T2
Insects:				
ALDERFLIES:				
Corydalidae:				
Chauliodes	1	1		
Sialidae:				
Sialis	2	3		
BEETLES:				
Dytiscidae:				
Agabus	2	5		
Neoporus	2		2	
Elmidae:				
Stenelmis crenata	2	1	1	
CADDISFLIES:				
Goeridae:				
Goera	3			14
Limnephilidae:				
Pycnopsyche	3	5	7	
Molannidae:				
Molanna	2		1	1
Phryganeidae:				
Oligostomis	3	1		
DRAGONFLIES:				
Aeshnidae:				
Boyeria	2	1		
Cordulegastridae:				
Cordulegaster	3	1		
MAYFLIES:				
Leptophlebiidae:				
Paraleptophlebia	3	224	36	2
STONEFLIES:				
Leutridae:				
Leuctra	4	2	1	
Nemouridae:				
Nemoura trispinosa	3	36	2	
Chloroperlidae:				
Swelzta	4	1		
Taeniopterygidae:				
Taeniopteryx	3	2		
TRUE FLIES:				
Chironomidae:				
Brillia	2	4	3	
Brundiniella eumorpha	4			1
Chironomus	0		5	
Conchapelopia	2	5		



	SV	Qualitative	T1	T2
Macropelopia	3	2		
Micropsectra	3	8		
Parametricnemus	3	1		
Prodiamesa	3	2	2	
Stictochironomus	2		1	
Tanypus	1		1	
Tribelos	1		7	
Trissopelopia	2	1		
Empididae	2	2	1	
Dixidae:				
Dixa	0	1		
Stratiomyidae:	0	1		
Tabanidae:				
Chrysops	2	1		3
Tipulidae:				
Antocha	3			1
Limonia	2	1		
Chelicerates:				
WATERMITES:				
Hygrobatidae:				
Hygrobates	3		2	5
Sperchonidae:				
Sperchon	2	2		
Crustaceans:				
AMPHIPODS:				
Hyalloelidae:				
Hyalloela	2	26	8	1
Molluscs:				
SNAILS:				
Gyalidae:				
Gyraulus	1	1	1	
Annelids:				
LEECHES:				
Glossiphoniidae:				
Placobdella ornata	2	1		
WORMS:				
Lumbriculidae:				
Lumbriculus variegatus	2	2		
Tubificidae:				
Aulodrilus pluriseta	2	4	11	1
hair chaete, immature	0		2	2
hair chaete absent, imm.	0	1		
Plathmeminthes:				
FLATWORMS:				
Planariidae:				
Hymenella retenuova	1	1		
<b>Number of taxa</b>		33	19	10
<b>Number of organisms</b>			94	31
<b>BioMAP(q) score</b>		3.25		
<b>BioMAP(d) Score</b>			11.7	16.5

**Table 3: Qualitative Benthic Sampling Results 2012**

<b>Qualitative Analysis</b>		
<b>Taxa</b>	<b>SV</b>	
Leuctra	4	stonefly
Swelzta	4	stonefly
Pycnopsyche	3	caddisfly
Oligostomis	3	caddisfly
Cordulegaster	3	dragonfly
Paraleptophlebia	3	mayfly
Nemoura trispinosa	3	stonefly
Taeniopteryx	3	stonefly
Macropelopia	3	true fly
Micropsectra	3	true fly
Parametricnemus	3	true fly
Prodiamesa	3	true fly
Sialis	2	alderfly
Agabus	2	beetle
Stenelmis crenata	2	beetle
Boyeria	2	dragonfly
Brillia	2	true fly
Conchapelopia	2	true fly
Trissopelopia	2	true fly
Empididae	2	true fly
Chrysops	2	true fly
Limonia	2	true fly
Sperchon	2	water mite
Hyalala	2	crustacean
Placobdella ornata	2	leech
Lumbriculus varigatus	2	worm
Aulodrilus pluriseta	2	worm
Chauliodes	1	alderfly
Gyraulus	1	snail
Hymanella retenuova	1	flatworm
Dixa	0	true fly
Stratiomyidae:	0	true fly
Tubificidae: hair chaete absent, imm.	0	worm
	<b>33</b>	
<b>Average Sensitivity (Top 25%)</b>	<b>3.25</b>	

**Top 25%**

**# species**



# CAPITAL PAVING INC.

**Quality Construction by Quality People**  
P.O. Box 815 Guelph, Ontario N1H 6L8

September 5, 2013

**Township of Puslinch**  
7404 Wellington Road 34  
Guelph ON  
N1H 6H9

CLERK'S DEPARTMENT	
TO	SD
Copy	
Please Handle	✓
For Your Information	✓
Council Agenda	OCT 2/13
File	

RECEIVED

SEP 13 2013

Township of Puslinch

**ATTENTION:** Ms. Karen Landry, CAO/Clerk

**RE:** 2013 Compliance Assessment Reports

Dear Ms. Landry,

Please find enclosed with this letter, copies of the 2013 Compliance Assessment Reports for the following aggregate sites and has also been filed with the Ministry of Natural Resources and County of Wellington:

- (1) 2013 Annual Compliance Assessment Report for Pit Licence Number 20085 – **Wellington Pit**, located on Lots 7 and 8, Concession 3, in the Township of Puslinch, County of Wellington; and
- (2) 2013 Annual Compliance Assessment Report for Pit Licence Number 5465 – **Pit 1**, located on Lot 22, Concession 7, in the Township of Puslinch, County of Wellington.

Should you have any questions, please do not hesitate to contact me at 519 – 822 – 4511.

Yours truly,  
**CAPITAL PAVING INC.**

George Lourenco, P.Eng  
Resources Manager



# Licensees Compliance Assessment Report - Aggregate Resources Act

## Background Information

Year: 2013

Licensee: **Capital Paving Inc.**

Licence ID #: 20085

MNR District/Area Office: Guelph District

Lot: 7 & 8

Conc.: 3

Geographic Twp: Township of Puslinch

Municipality: County of Wellington

## Observations

OPERATING STANDARDS	IN COMPLIANCE?			COMMENTS	Remedial Action?
	Yes	No	N/A		
<b>A - Site Access</b>					
A1	X				Y
A2	X				
A3				Extraction Agreements in place	
<b>B - Site Protection</b>					
B4		X		Minor fence repair required. (see sketch)	
B5	X			All fencing in compliance with site plans	
B6	X			All screens in place according to phasing	
B7	X				
<b>C - Operational Details</b>					
C8	X			As per plan	
C9	X			All overburden and topsoil stripped stockpiled or in berms for future rehabilitation.	
C10	X				
C11	X			Lowest floor elevation <u>+/- 307m</u>	
C12	X			As per site plans	
C13	X			As per site plans	
C14	X			As per site plans	
C15	X			located in designated area	
C16	X			in processing area	
C17	X				
C18	X			All stable	
C19	X				
C20	X				
C21	X				
C22			X	No blasting	
C23	X			Water truck used when required	
C24	X				
C25	X				
C26	X				
C27	X				
C28			X	No Blasting	

**Note: Any ("No") requires completion of Page 3**





**THIS SECTION MUST BE COMPLETED WHEN REMEDIAL ACTION IS REQUIRED**

OPERATING STANDARDS from Pg. 1 (e.g. B4 – Fencing)	Remedial Action Required	Deadline Date	MNR Direction (for MNR use only)
<i>EXAMPLE B4 - Fencing</i>	<i>200 ft of West boundary to be fenced</i>	<i>June 15 / 99</i>	

**SEE NOTES BELOW REGARDING REMEDIAL ACTION DEADLINE DATES**

<i>B4 - Fencing</i>	<i>Minor Fence repair required at locations shown on sketch.</i>	<i>Nov. 15/2013</i>	

Sketch Included? (see note below)
 Licence ID #: 20085
 Additional Detailed Information Attached

- **You must provide a sketch if remedial action is required or progressive rehabilitation has been performed.**
- **In order to extend the 90-day remedial action deadline date, you must obtain the Aggregate Inspector's approval (in writing) prior to filing the report with the Inspector or local MNR office.**

Date Submitted to MNR: Y / M / D	2013 / 09 / 05	Please ensure that the site plan you have is the most current, approved plan and is the same as the one MNR has on file.
Is the site held in reserve? <input type="checkbox"/> YES or <input checked="" type="checkbox"/> NO		

Copies of Report Sent to: (by September 30th)	County/Regional Municipality	Local Municipality	Ministry of Natural Resources
	<input checked="" type="checkbox"/> YES	<input checked="" type="checkbox"/> YES	<input checked="" type="checkbox"/> YES

<b>TO BE COMPLETED BY PERSON CONDUCTING REVIEW (including on-site inspection)</b>			
Date Inspected: Y / M / D	2013 / 09 / 03	Review Conducted by: (Please Print)	Signature (if different than licensee):
		George Lourenco	
Name of Company and Address: Capital Paving Inc., P.O. Box 815, Guelph ON N1H 6L8			
Position with Company: Resources Manager			

Signature of Licensee or Authorized Official:


<b>FOR MNR OFFICE USE ONLY</b>				
Accepted by MNR: (✓ one)	YES <input type="checkbox"/> NO <input type="checkbox"/>	Date Accepted: Y / M / D	/ /	MNR Signature:
Field Audit by MNR: (✓ one)	YES <input type="checkbox"/> NO <input type="checkbox"/>	Date Inspected: Y / M / D	/ /	MNR Signature:
Follow up Notice Required?	YES <input type="checkbox"/> NO <input type="checkbox"/>	Licence ID #:		

- Pursuant to subsection 57(4) of the ARA, it is an offence to furnish false information.
- You must provide a sketch if remedial action is required or progressive rehabilitation has been performed.
- In order to extend the 90-day remedial action deadline date, you must obtain the Aggregate Inspector's approval (in writing) prior to filing the report with the Inspector or local MNR office.
- Please submit this report to the local Aggregate Inspector who administers your site, or the local MNR office.

**(NOTE: ALL INFORMATION IN RESPECT OF THIS REPORT IS AVAILABLE FOR PUBLIC REVIEW)**

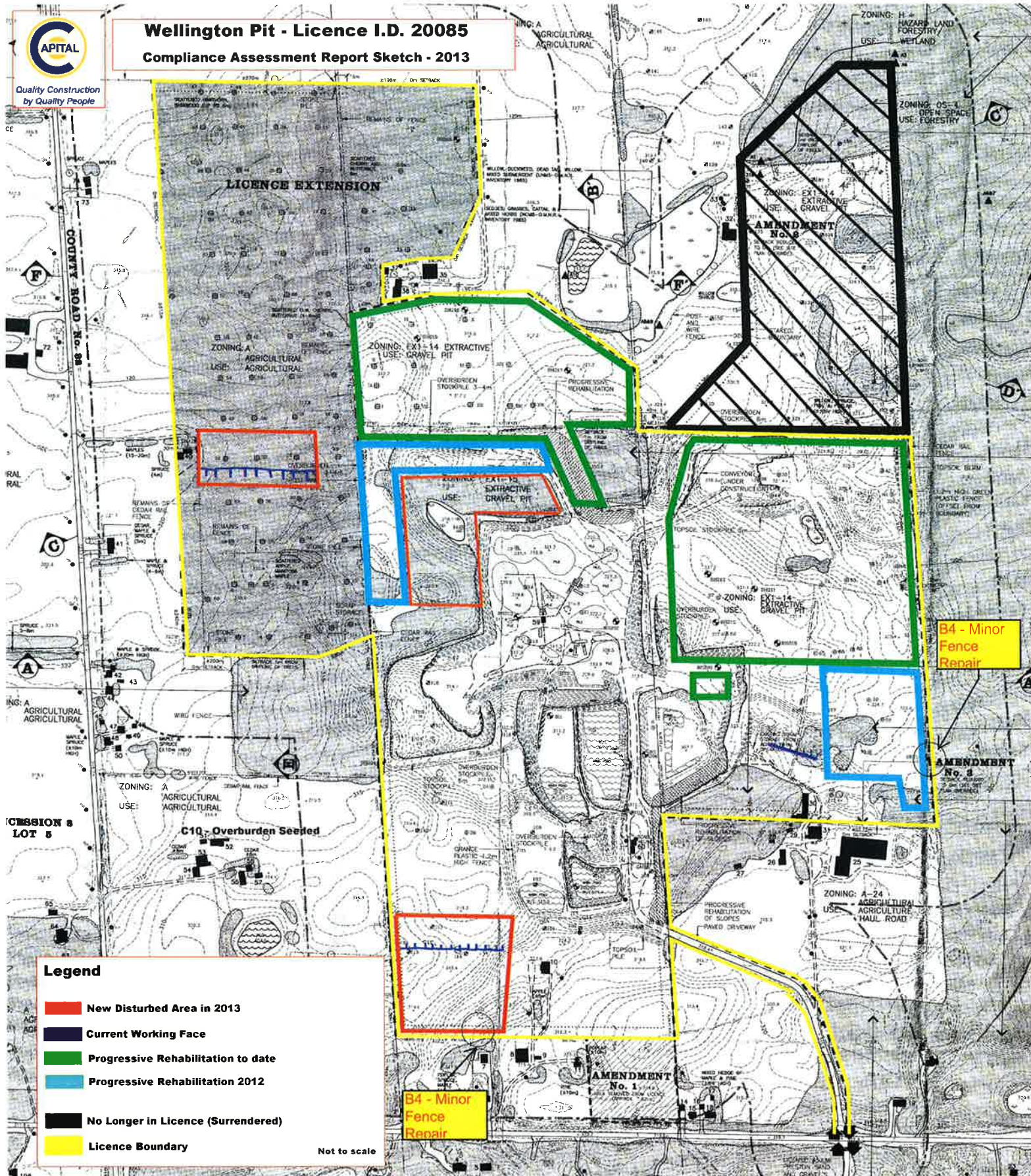




Quality Construction  
by Quality People

# Wellington Pit - Licence I.D. 20085

## Compliance Assessment Report Sketch - 2013



### Legend

- New Disturbed Area in 2013
  - Current Working Face
  - Progressive Rehabilitation to date
  - Progressive Rehabilitation 2012
  - No Longer in Licence (Surrendered)
  - Licence Boundary
- Not to scale

B4 - Minor  
Fence  
Repair

B4 - Minor  
Fence  
Repair



# Licensees Compliance Assessment Report - Aggregate Resources Act

## Background Information

Year: 2013

Licensee: **Capital Paving Inc.**

Licence ID #: 5465

MNR District/Area Office: Guelph District

Lot: 22

Conc.: 7

Geographic Twp.: Township of Puslinch

Municipality: County of Wellington

## Observations

OPERATING STANDARDS	IN COMPLIANCE?			COMMENTS	Remedial Action?
	Yes	No	N/A		
<b>A - Site Access</b>					
A1 Boundaries (clearly marked)	X				Y
A2 Entrance and Exits (location/closed)	X				
A3 Lease/Ownership/Extraction Agreement				<i>Ownership</i>	
<b>B - Site Protection</b>					
B4 Fencing	X				
B5 Fencing (site plan variation or temporary relief granted)	X			<i>Relief granted on south boundary with CBY</i>	
B6 Screening (trees/berms)	X				
B7 Setbacks (15m / 30m or other)	X				
<b>C - Operational Details</b>					
C8 Operating Sequence	X				
C9 Stripping (overburden)	X				
C10 Overburden Seeded	X				
C11 Extraction Depth	X			Lowest floor elevation <i>± 309 m</i>	
C12 Buildings/Scales (location)	X			<i>Located in Industrial zone. Not in licence</i>	
C13 Equipment (any specific conditions or restrictions)	X				
C14 Plant (location/any specific conditions or restrictions)	X			<i>Plant in Industrial zone. Not in licence</i>	
C15 Scrap (location/removal)					
C16 Stockpiles (location)					
C17 Topsoil (location/seeded)	X				
C18 Excavation Faces	X				
C19 Ponds (location/depth)	X				
C20 Internal Roads (any specific conditions or restrictions)	X			<i>No restrictions</i>	
C21 Haul Routes (external/any specific conditions or restrictions)	X				
C22 Blast Monitoring Report (quarries only)			X		
C23 Dust Suppression	X			<i>Water applied when required</i>	
C24 Hours of Operation (any specific conditions or restrictions)	X				
C25 Well Monitoring Reports	X				
C26 Identification Sign (as per Sect. 5.22 of Provincial Standards)	X				
C27 Orderly Conditions	X				
C28 Blasting Hours (quarries only)			X		

**Note: Any ("No") requires completion of Page 3**

**Observations (continued)**

OPERATING STANDARDS	IN COMPLIANCE?			COMMENTS	Remedial Action?
	Yes	No	N/A		
<b>D - Rehabilitation</b>					<b>Y</b>
D29 Disturbed Hectarage	X			Current year - # of hectares <u>0</u> Total # of hectares <u>5.88</u>	
D30 Progressive rehabilitation	X			Current year - # of hectares <u>0</u> Total # of hectares <u>1.98</u>	
D31 Sloping of Faces	X				
D32 Grades/Contours/Elevations	X				
D33 Importation of Material (inert)	X				
D34 Vegetation	X				
D35 Final Rehabilitation	X			<i>ongoing</i>	
<b>E - Prescribed Conditions (For Licences issued after June 27, 1997)</b>					
E36 Other Monitoring Reports			X		
E37 Requirements of C of A's			X		
E38 Noise Mitigation			X		
E39 Fuel Storage Tanks			X		
E40 Spills Plan			X		
E41 Permit to Take Water			X		
E42 Dust Suppression Measures Req'd. (Haul routes, equip, etc.)			X		
<b>F - Other Conditions (As indicated on either Site Plan or Licence)</b>					
F43 <i>No Tonnage Limit</i>	X				
F44					
F45					
<b>General Comments:</b>					
<p>① Permit to Take Water # 4373 - 8TXQK3 for washing equipment. Water taking reported annually to MOE.</p> <p>② 7.99 Ha of site is not in licence and zoned Industrial. Includes shop, storage Quonset, Asphalt Plant + Concrete Plant + stockpiles.</p>					
<b>Licence ID#: 5465</b>					

Note: Any ("No") requires completion of Page 3





Date Submitted to MNR: Y / M / D	2013 10 9 105	Please ensure that the site plan you have is the most current, approved plan and is the same as the one MNR has on file.
Is the site held in reserve? <input type="checkbox"/> YES or <input checked="" type="checkbox"/> NO		

Copies of Report Sent to: (by September 30th)	County/Regional Municipality	Local Municipality	Ministry of Natural Resources
	<input checked="" type="checkbox"/> YES	<input checked="" type="checkbox"/> YES	<input checked="" type="checkbox"/> YES

<b>TO BE COMPLETED BY PERSON CONDUCTING REVIEW (including on-site inspection)</b>			
Date Inspected: Y / M / D	2013 10 8 29	Review Conducted by: (Please Print)	Signature (if different than licensee):
		George Lawrence	
Name of Company and Address: Capital Paving Inc., P.O. Box 815, Guelph ON N1H 6L8			
Position with Company: Resources Manager			

Signature of Licensee or Authorized Official:


<b>FOR MNR OFFICE USE ONLY</b>			
Accepted by MNR: (✓ one)	YES <input type="checkbox"/> NO <input type="checkbox"/>	Date Accepted: Y / M / D	/ /
Field Audit by MNR: (✓ one)	YES <input type="checkbox"/> NO <input type="checkbox"/>	Date Inspected: Y / M / D	/ /
Follow up Notice Required?	YES <input type="checkbox"/> NO <input type="checkbox"/>	Licence ID #:	

- Pursuant to subsection 57(4) of the ARA, it is an offence to furnish false information.
- You must provide a sketch if remedial action is required or progressive rehabilitation has been performed.
- In order to extend the 90-day remedial action deadline date, you must obtain the Aggregate Inspector's approval (in writing) prior to filing the report with the Inspector or local MNR office.
- Please submit this report to the local Aggregate Inspector who administers your site, or the local MNR office.

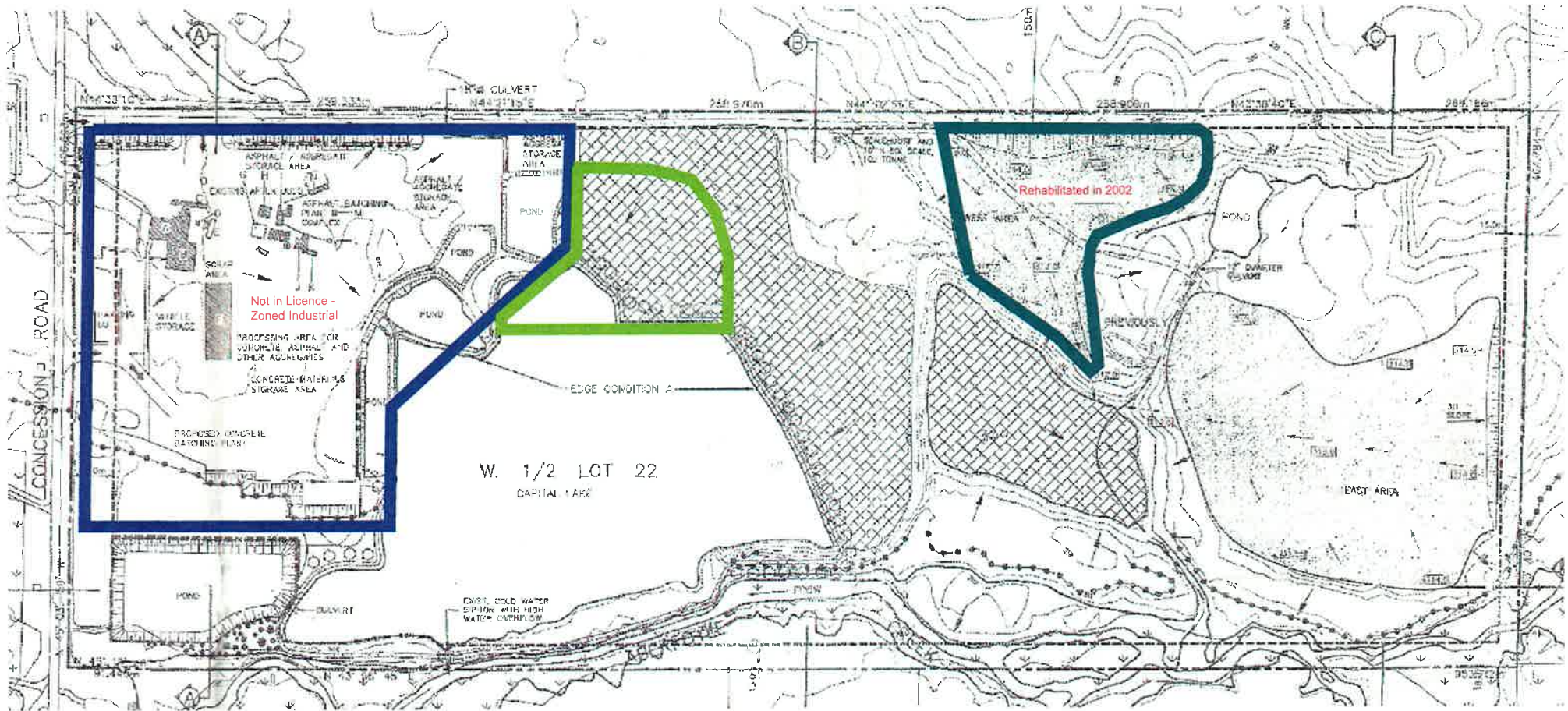
**(NOTE: ALL INFORMATION IN RESPECT OF THIS REPORT IS AVAILABLE FOR PUBLIC REVIEW)**



# CAPITAL PAVING INC. - PIT 1



## COMPLIANCE ASSESSMENT SKETCH - September 2013



Not to scale

- Area zoned Industrial in 2008. Not within Licence boundary. (7.99 Ha)
- Area currently undergoing progressive rehabilitation
- Area previously rehabilitated in 2002

6.2(b)



RECEIVED  
SEP 18 2013  
Township of Puslinch

September 10, 2013

Ministry of Natural Resources  
Guelph District Office  
1 Stone Road West  
Guelph, Ontario  
N1G 4Y2

CLERK'S DEPARTMENT	
TO	<del>SS</del>
Copy	
Please Handle	<input checked="" type="checkbox"/>
For Your Information	
Council Agenda	✓ Oct 21/13
File	

**Re: 2013 Compliance Assessment Report for Licence # 5482 (Hespeler Quarry)**

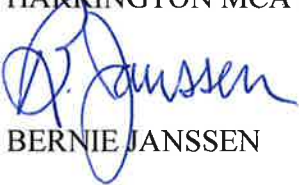
Dear Diane:

Enclosed for your records is a copy of the 2013 compliance assessment report that has been completed as per the Aggregate Resources Act for the subject licensed quarry located in part lots 1-3, Concession 4 in the Township of Puslinch.

If you have any questions regarding this matter, please give me a call at (519) 740-7250 or 773-6830.

Sincerely,

HARRINGTON MCAVAN LTD

  
BERNIE JANSSEN

BJ/

- c.c. Township of Puslinch
- c.c. The County of Wellington
- c.c. Chris Martin, Carmeuse Lime



# Licensees Compliance Assessment Report - Aggregate Resources Act

Background Information						Year: 2013	
Licensee: Carneuse Lime (Canada)			Licence ID #: 5482		MNR District/Area Office: Guelph		
Lot: 1, 2 & 3	Conc.: 4	Geographic Twp.: Puslinch			Municipality: Township of Puslinch		
Observations							
OPERATING STANDARDS		IN COMPLIANCE?			COMMENTS		Remedial Action?
		Yes	No	N/A			
<b>A - Site Access</b>							Y
A1	Boundaries (clearly marked)	X			Boundaries are either fenced or demarcated with remains of fencing and marker posts.		
A2	Entrance and Exits (location/closed)	X			Two sets of gates located at main entrance/exit at Highway #24 (Hespeler Road). Farm entrance at Forestell Road is also gated.		
A3	Lease/Ownership/Extraction Agreement Owned by licensee.						
<b>B - Site Protection</b>							
B4	Fencing		X		Majority of boundaries are presently fenced as per fencing plan. Sections of fencing on the licensed perimeter have been cut or damaged. See general comments.		Y
B5	Fencing (site plan variation or temporary relief granted)	X			Refer to fencing location detail on page 3 for relief along the south boundary, west of entrance/exit in heavily wooded area and east boundary, adjacent to another pit.		
B6	Screening (trees/berms)	X			Natural tree screens in place.		
B7	Setbacks (15m / 30m or other)	X			Site plan variation (override) for faces located within the 15 m setback along the railway (see note #4) and east boundary adjacent to licensed pit.		
<b>C - Operational Details</b>							
C8	Operating Sequence	X			Pit on east side of the river area has been rehabilitated to agricultural use. Quarry is held in reserve.		
C9	Stripping (overburden)	X			Overburden has been placed in stockpiles located on site.		
C10	Overburden Seeded	X			Existing overburden stockpiles are vegetated.		
C11	Extraction Depth	X			Lowest elevations in quarry are flooded. Max. depth allowed is 270 m asl.	Lowest floor elevation < 299 m asl	
C12	Buildings/Scales (location)	X			There are no existing buildings on site.		
C13	Equipment (any specific conditions or restrictions)	X			There is no equipment operating on site.		
C14	Plant (location/any specific conditions or restrictions)	X			There is no plant on site. Remains of processing plant in east quarry.		
C15	Scrap (location/removal)	X			Scrap can be kept in present locations until quarry operations resume again (See note #3a approved by MNR on May 2/99).		
C16	Stockpiles (location)	X			Lime disposal stockpile located adjacent to west bank of Speed River (see note #5 for site plan override).		
C17	Topsoil (location/seeded)	v			Topsoil has been used for the rehabilitation of the pit area (Areas 1a and 1b).		
C18	Excavation Faces	X			Only the quarry faces remain.		
C19	Ponds (location/depth)	X			There are ponds in the quarries located on either side of the railway.		
C20	Internal Roads (any specific conditions or restrictions)	X			As shown on the site plans.		
C21	Haul Routes (external/any specific conditions or restrictions)	X			Material from quarry was hauled west to Hespeler Road. Forestell Road was used to access the pit portion of the licence.		
C22	Blast Monitoring Report (quarries only)			X	Quarry is not in operation at this time.		
C23	Dust Suppression	X			Site is presently not in operation.		
C24	Hours of Operation (any specific conditions or restrictions)	X			No conditions or restrictions.		
C25	Well Monitoring Reports			X	Not a requirement at this time.		
C26	Identification Sign (as per Sect. 5.22 of Provincial Standards)	X			Identification sign is located at main entrance/exit and is maintained.		
C27	Orderly Conditions	X			See note #3a approved by MNR regarding existing scrap.		
C28	Blasting Hours (quarries only)			X	Quarry is not in operation at this time.		

**Note: Any ("No") requires completion of Page 3**



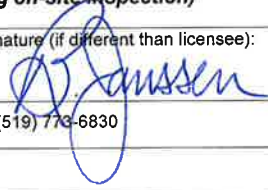
<b>Observations (continued)</b>					
OPERATING STANDARDS	IN COMPLIANCE?			COMMENTS	Remedial Action?
	Yes	No	N/A		
<b>D – Rehabilitation</b>					<b>Y</b>
D29 Disturbed Hectarage	X			Current year - # of hectares 0	Total # of hectares +/- 49
D30 Progressive rehabilitation	X			Current year - # of hectares 0	Total # of hectares +/- 12
D31 Sloping of Faces	X			All faces in gravel pit, east of river, have been sloped.	
D32 Grades/Contours/Elevations	X			Established as shown on the site plans.	
D33 Importation of Material (inert)	X			No materials imported for rehabilitation at this time.	
D34 Vegetation	X			Rehabilitated area is partially vegetated (ie. hay and grains). Portions of the pit floor have been stone picked.	
D35 Final Rehabilitation	X			Existing reserves remain on site.	
<b>E - Prescribed Conditions (For Licences issued after June 27, 1997)</b>					
E36 Other Monitoring Reports			X		
E37 Requirements of C of A's			X		
E38 Noise Mitigation			X		
E39 Fuel Storage Tanks			X	No fuel storage on site.	
E40 Spills Plan			X		
E41 Permit to Take Water			X		
E42 Dust Suppression Measures Req'd. (Haul routes, equip, etc.)			X	No equipment operating on site.	
<b>F - Other Conditions (As indicated on either Site Plan or Licence)</b>					
F43 Tonnage Condition	X			Class A Licence – 1,000,000 tonnes	
F44					
F45					
<b>General Comments:</b>					
Quarry is inactive. Pit area on east side of river was rehabilitated several years ago and is actively farmed.					
B4 – Over 3100 metres of fencing was installed on the licensed perimeter a few years ago. There are sets of steel gates across the laneway at the railway crossing to restrict access into site and regular security patrols of site to keep out trespassers.					
Fencing repairs were completed for damaged sections noted in 2012 (see 2012 Compliance Assessment report). However, sections of the perimeter have been damaged by fallen trees and/or by trespassers in 2013 (see sketch).					
Corporate name change completed for licence on May 19/2011.					
Licence ID#: 5482					

Note: Any ("No") requires completion of Page 3



Date Submitted to MNR: Y / M / D	2013 / 09 / 16	Please ensure that the site plan you have is the most current, approved plan and is the same as the one MNR has on file.
Is the site held in reserve? <input type="checkbox"/> YES or <input checked="" type="checkbox"/> NO		

Copies of Report Sent to: (by September 30th)	County/Regional Municipality	Local Municipality	Ministry of Natural Resources
	<input checked="" type="checkbox"/> YES	<input checked="" type="checkbox"/> YES	<input checked="" type="checkbox"/> YES

TO BE COMPLETED BY PERSON CONDUCTING REVIEW (including on-site inspection)			
Date Inspected: Y / M / D	2013 / 06 / 28	Review Conducted by: B. Janssen (Please Print)	Signature (if different than licensee): 
Name of Company and Address: Harrington McAvan Ltd 55 Ainslie St. N, 2 <sup>nd</sup> Floor, Cambridge, Ontario N1R 3J6 (519) 773-6830			
Position with Company: Consultant hired by licensee to complete compliance assessment.			

Signature of Licensee or Authorized Official: 
---

FOR MNR OFFICE USE ONLY				
Accepted by MNR: (✓ one)	YES <input type="checkbox"/> NO <input type="checkbox"/>	Date Accepted: Y / M / D	/ /	MNR Signature:
Field Audit by MNR: (✓ one)	YES <input type="checkbox"/> NO <input type="checkbox"/>	Date Inspected: Y / M / D	/ /	MNR Signature:
Follow up Notice Required?	YES <input type="checkbox"/> NO <input type="checkbox"/>	Licence ID #: 5482		

- Pursuant to Subsection 57(4) of the ARA, it is an offence to furnish false information.
- You must provide a sketch if remedial action is required or progressive rehabilitation has been performed.
- In order to extend the 90-day remedial action deadline date, you must obtain the Aggregate Inspector's approval (in writing) prior to filing the report with the Inspector or local MNR office.
- Please submit this report to the local Aggregate Inspector who administers your site, or the local MNR office.

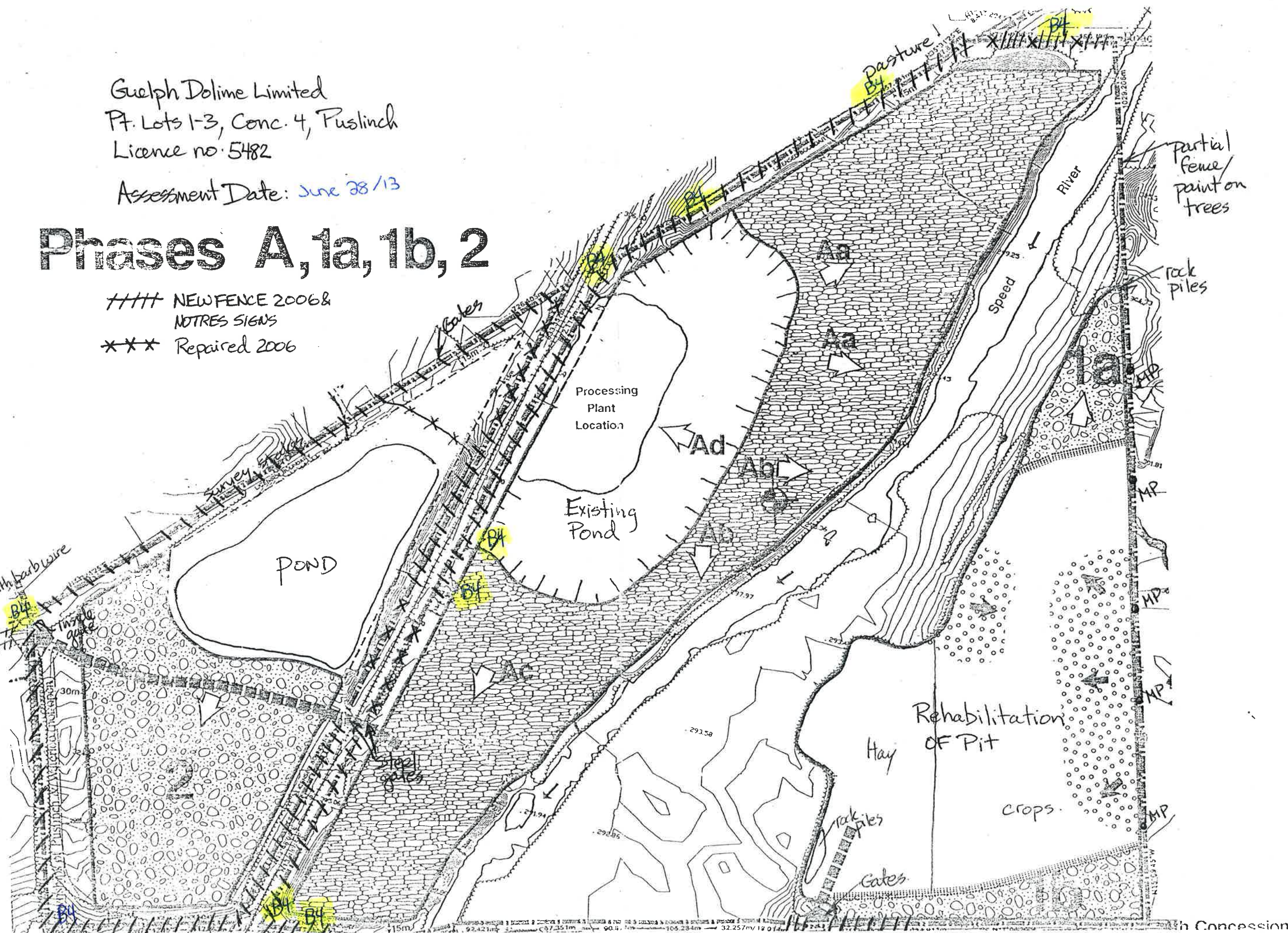
**(NOTE: ALL INFORMATION IN RESPECT OF THIS REPORT IS AVAILABLE FOR PUBLIC REVIEW)**



Guelph Dolime Limited  
 Pt. Lots 1-3, Conc. 4, Puslinch  
 Licence no. 5482  
 Assessment Date: June 28/13

# Phases A, 1a, 1b, 2

#### NEW FENCE 2006 &  
 NOTRES SIGNS  
 \*\*\* Repaired 2006



on of the  
 .s.l.) and  
  
 contours  
 will be  
 ded with  
 lished as  
  
 ration is  
  
 undarles  
 removed  
 emaining  
 e will be  
 agement  
  
 creating  
 NEW  
 ARA  
 SIGN  
 5482  
 ed on the  
 ie quarry  
  
 outlined  
  
 flrst lift.  
  
 ximately  
  
 s around  
  
 area and

partial  
 fence/  
 paint on  
 trees

rock  
 piles

Rehabilitation  
 OF Pit

Hay

crops

rock  
 piles

Gates

h Concession