

From: AMO Communications [mailto:communicate@amo.on.ca]

Sent: September-26-13 8:03 PM

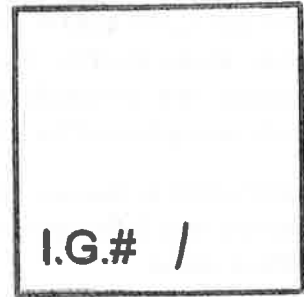
To: Karen Landry

Subject: AMO Breaking News - Development Charges Act (DCA) Consultations

TO THE IMMEDIATE ATTENTION OF THE CLERK AND COUNCIL

September 26, 2013

Development Charges Act (DCA) Consultations



On September 24th, Ontario's Environmental Commissioner, Gord Miller, released his 2012 Annual Energy Conservation Progress Report, which among other recommendations, seeks reforms to the Development Charges Act, 1997. The Commissioner argues for the lifting of current restrictions which limit the use of Development Charges (DCs) to fund transit. This supports a long-held municipal position – growth should pay for growth. Transit is an important component of transportation systems too.

Among the Commissioner's findings:

"...Public transit is treated inequitably, despite the clear benefits it provides in addressing traffic congestion, thereby reducing air pollution and [Greenhouse Gas] emissions."

"Some urban planners and municipal finance experts have suggested that DCs are structured in a manner that undermines the growth management goals contained within provincial and municipal planning tools."

"It may be timely to re-examine how DCs – a fiscal tool – can work in concert with, rather than against, the planning tools in place."

"Statutory limitations were specifically identified as a key barrier for municipalities wishing to enhance their public transit system."

On August 20th, the Minister of Municipal Affairs and Housing, the Honourable Linda Jeffrey announced that a consultation on the Development Charges Act would take place in the coming months. While very few details regarding this consultation are currently available, its scope must include transit and other service based matters. An August 20th news release from Ontario Home Builders Association (OHBA) applauded the Minister's announcement. Like them, we await further release of the goal and scope of the review.

It is safe to say, that municipalities could not support a roll back of Development Charge funding for services. As the Environmental Commissioner indicated, the current discount and service level calculation for transit needs attention. The Development Charges Act was amended for the 2006 Toronto-York Spadina Subway Extension and lifted the ten year historical service level average and the 10% discount just for that project. It is time to extend this to all other municipal DCs across Ontario as the Environmental Commissioner has noted.

Municipal priority areas for DCA changes have long been tabled with the Province, so AMO's members are very interested to understand what the review is about in greater detail. The current Development Charges Act needs improvement and the government's review must include an examination of key municipal issues.

AMO Contact: Matthew Wilson, Senior Advisor, [mwilson@amo.on.ca](mailto:mwilson@amo.on.ca) <<mailto:mwilson@amo.on.ca>> or 416-971-9856 Ext. 323.

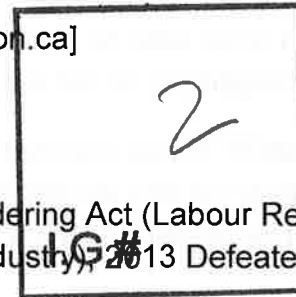
PLEASE NOTE AMO Breaking News will be broadcast to the member municipality's council, administrator and clerk. Recipients of the AMO broadcasts are free to redistribute the AMO broadcasts to other municipal staff as required. We have decided to not add other staff to these broadcast lists in order to ensure accuracy and efficiency in the management of our various broadcast lists.

DISCLAIMER These are final versions of AMO documents. AMO assumes no responsibility for any discrepancies that may have been transmitted with the electronic version. The printed versions of the documents stand as the official record.

From: AMO Communications [mailto:communicate@amo.on.ca]  
Sent: September-24-13 7:03 PM

To: Karen Landry

Subject: AMO Policy Update - Bill 73 - Fair and Open Tendering Act (Labour Relations for Certain Public Sector Employers in the Construction Industry), 2013 Defeated in the House



TO THE IMMEDIATE ATTENTION OF THE CLERK AND COUNCIL

September 24, 2013

Bill 73 - Fair and Open Tendering Act (Labour Relations for Certain Public Sector Employers in the Construction Industry), 2013 defeated in the House

The AMO Board recently supported a Private Members' Bill that was introduced by Kitchener-Conestoga, MPP Michael Harris, to address closed tendering. Bill 73, the Fair and Open Tendering Act, proposed to amend the Labour Relations Act, 1995 (LRA) where municipalities are currently deemed "construction employers". This prohibits municipalities from openly tendering construction work – limiting local firms and other competitively priced firms from being considered for projects.

The costs associated with these projects continue to escalate. Public employers should be able to openly contract projects to eligible bidders and keep the costs economical for publicly procured projects. AMO believes that it is within the interest of the public to stretch infrastructure dollars to maximize the value of investment.

If passed, this Bill would have clarified that municipalities and school boards are not construction employers; however, the Bill was defeated in the house on September 19th.

The Ministry of Labour has indicated that there is a provision in the current Act that allows a municipality to declare that they are not a construction employer. The employer can make an application to the OLRB. If the application succeeds (i.e. if the employer can show that it does no work in the construction industry for which it expects compensation from an unrelated person), the Ontario Labour Relations Board (OLRB) issues a declaration that the employer is a non-construction employer. AMO is seeking clarification on this provision for municipalities from the Ministry of Labour.

Contact: Sumeeta Kapur, Policy Advisor, skapur@amo.on.ca , 416-971-9856 ext 353.

PLEASE NOTE AMO Breaking News will be broadcast to the member municipality's council, administrator and clerk. Recipients of the AMO broadcasts are free to redistribute the AMO broadcasts to other municipal staff as required. We have decided

to not add other staff to these broadcast lists in order to ensure accuracy and efficiency in the management of our various broadcast lists.

**DISCLAIMER** These are final versions of AMO documents. AMO assumes no responsibility for any discrepancies that may have been transmitted with the electronic version. The printed versions of the documents stand as the official record.

Sent by e-mail: [Michael.HarrisQP@pc.ola.org](mailto:Michael.HarrisQP@pc.ola.org)  
[michael.harris@pc.ola.org](mailto:michael.harris@pc.ola.org)

August 26, 2013

Michael Harris, MPP  
Member, PC - Kitchener-Conestoga  
Legislative Building - Room 344  
Queen's Park  
Toronto ON M7A 1A8

Dear Mr. Harris:

At its August Board of Directors meeting, the AMO Board supported a Private Member's Bill that you tabled, *Bill 73: Fair and Open Tendering Act (Labour Relations for Certain Public Sector Employers in the Construction Industry), 2013*.

Municipalities should be able to tender construction work in a free and open competitive environment to gain the most value for construction expenditures. The opportunity to openly tender projects keeps costs efficient in a time where fiscal resources are being stretched.

We agree with your approach to clarify legislation within the *Labour Relations Act*, so municipalities and school boards are not deemed construction employers. Municipalities are not engaged in the construction business for profit and therefore should not be considered a construction employer according to the Act.

We will monitor this Bill as it moves forward for second reading. Thank you for recognizing the fiscal constraints under which municipalities operate and for tabling this Bill.

Yours truly,



R.F. (Russ) Powers  
President



RECEIVED

APR 09 2013

Township of Puslinch

April 4, 2013

Mayor Dennis Lever  
Township of Puslinch,  
7404 Wellington Road 34  
Guelph Ontario N1H 6H9

Dear Mayor Lever,

A situation has recently come to our attention in the Regional Municipality of Waterloo that could threaten the ability of that municipality to openly tender municipal projects to all eligible contractors in the Region. The situation impacting the Region of Waterloo is not unique. A similar situation has already happened in Hamilton and could be replicated in other municipalities throughout the province.

If your municipality is targeted in the future you will likely be classified as a construction employer and subject to strict contracting out restrictions for municipal projects. These contracting out restrictions can increase the costs on large infrastructure projects by up to 40% and ban between 70-90% of all union and non-union contractors and workers from participating in taxpayer funded projects.

The Christian Labour Association of Canada (CLAC) and the Progressive Contractors Association of Canada (PCA) are currently advocating for a change to the existing legislation. The change we are seeking would ensure municipalities and other public employers are not forced to adopt the province wide agreement and the restrictive contracting out restrictions if they are organized by a construction union. It is a solution that respects the constitutional rights of individual workers; ensures fairness and participation rights for all workers and contractors regardless of private affiliation; and, prevents construction monopolies that drive up costs for taxpayers.

We are bringing this issue to your attention to raise awareness and to gain your support in calling on the province to change the legislation. For your consideration, we have drafted a sample resolution that could be tabled at a council meeting in the near future. If the resolution is passed we ask that you forward a copy to the Minister of Labour and the Premier of Ontario. The Province needs to hear from all impacted parties that a legislative change is needed to ensure procurement in Ontario remains fair and open and to protect our hard earned tax dollars.

More information about the case in the Region of Waterloo and the current legislative framework has been provided in the attached documents. If you have any further questions please do not hesitate to contact us. We will be in touch to follow up in the next couple weeks.

Thank you for your consideration of this important matter.

Sincerely,



Sean Reid  
Director, Federal and Ontario  
Progressive Contractors Association of Canada  
289-335-1181 or [sreid@pcac.ca](mailto:sreid@pcac.ca)



Ian DeWaard  
Regional Director  
Christian Labour Association of Canada  
519-653-3002 or [idewaard@clac.ca](mailto:idewaard@clac.ca)

***About PCA***

The PCA is the voice of progressive unionized employers in Canada's construction industry. PCA member companies employ more than 25,000 skilled construction workers across Canada, represented primarily by the Christian Labour Association of Canada (CLAC). Their member companies are responsible for 40% of energy and natural resource construction projects in British Columbia and in Alberta and are leaders in infrastructure construction across Canada.  
*Mailing Address: 1100 South Service Road, Suite 220, Stoney Creek, Ontario, L8E 0C5*

***About CLAC***

CLAC is an independent Canadian labour union representing over 55,000 workers in a wide range of sectors — construction, health care, retail, service, transportation, manufacturing, and others. Based on principles that promote the values of respect, dignity, fairness, and integrity, CLAC's approach to labour relations stresses membership advocacy, cooperation, and the long term interests of the workplace community. CLAC provides training support for its members to acquire, maintain and upgrade their skills. Courses are designed to keep members up to date with legislative requirements and codes, as well as provide them with applicable health and safety training.

*Mailing Address: 64 Saltsman Drive,, Preston, Ontario, N3H 4R7*

# Open Tendering Overview

## *The Region of Waterloo Issue*

---

Late last year two workers erecting a plastic garden shed on a Saturday were organized by the Carpenters Union and a certification bid was filed with the Ontario Labour Relations Board. The Region of Waterloo is currently fighting the certification attempt but if they are unsuccessful at the Labour Relations Board the municipality will be forced to adopt the Carpenter's province wide collective agreement which contains strict contracting out language. The contracting out restrictions will effectively create a labour monopoly.

For the Region of Waterloo, or any other public employer in a similar situation, there are drastic cost and fairness implications associated with closed tendering on large projects. Closed tendering can escalate the costs of projects by up to 40% and reduce the number of contractors who can bid and work on projects by up to 90%. In a fiscal environment where dollars are forced to stretch farther than before and a labour market where elected officials are working hard to create opportunities, it is not in the interest of the public to drive up costs with no value add and reduce opportunities for local individuals and companies.

## *The Legislative Problem*

---

An employer, who is certified as a construction employer under the Labour Relations Act (LRA), is bound to a provincial-wide collective agreement. Many of these provincial agreements, the Carpenters agreement specifically, contain a requirement that any contracted out work must be performed by unionized construction employees represented by the union that certified the employer. The implication of this is that only select union contractors would be able to bid on industrial commercial or institutional projects that are funded by tax dollars. For example, projects like bridges, water treatment upgrades, courthouses etc. could only be tendered to contractors who have been organized by a particular union.

Public employers like municipalities can argue that they should not be considered a construction employer under the Act. The definition of a "non-construction employer" is an employer who does no work in the construction industry for which the employer expects compensation from an unrelated person. There are multiple criteria considered by the Ontario Labour Relations Board when making a determination about the status of a construction vs. non-construction employer. These criteria put municipalities and other public employers at serious risk of being deemed construction employers by the Board.

There is a solution that can fix this problem in Ontario and ensure that public employers are able to openly contract projects to eligible bidders and keep the costs competitive for publicly procured projects. The solution requires the Government to introduce a bill that would amend existing legislation.



## Additional Resources

---

**CARDUS COMPETITIVENESS MONITOR** – An in depth review of the impact of construction labour monopolies in Ontario compiled by the independent think tank Cardus in October 2012.

LINK: <http://www.cardus.ca/research/workandeconomics/publications/>

**CARDUS COMPETITIVENESS BRIEF** – A recent document produced by the independent think tank Cardus that details the impact of potential Carpenters Union certification of the Regional Municipality of Waterloo.

LINK: <http://www.cardus.ca/research/workandeconomics/publications/>

**LUMCO RESOLUTION** - A copy of similar resolution calling for changes to the existing legislation that was passed by the Large Urban Mayors Caucus of Ontario in June of 2008.

LINK: <http://www.hamilton.ca/NR/rdonlyres/200D8A05-D997-47B2-9345-38CBEFD598C8/0/Jul09item45.pdf>

**CITY OF HAMILTON STAFF REPORT** – The City of Hamilton composed a report for Council to evaluate the impact of the certification of the Carpenters Union on the municipality. The staff report contains the cost inflation estimate on large projects of 40%.

LINK: <http://www.hamilton.ca/NR/rdonlyres/6C0B1909-8E7B-41FB-A607-5F00B21FCCA/0/Sep12LS07012.pdf>

2013

# Smoke-Free Outdoor Spaces

Results from the 2013 Smoke-Free Outdoor Spaces survey  
Wellington County

I.G.# 3

Chronic Disease and Injury Prevention Team

Wellington-Dufferin-Guelph Public Health

9/1/2013

# Wellington County

---

## *Smoke-Free Outdoor Spaces Survey Results*

### **Table of Contents**

Executive Summary.....	3
Background .....	4
Methods.....	6
Results.....	7
Demographics .....	7
Health Beliefs .....	7
Support for 100% smoke-free policies.....	9
Qualitative statements .....	10
Recommendations .....	10
Conclusion.....	11
References .....	12
APPENDIX A.....	13
APPENDIX B.....	14
APPENDIX C.....	15

## **Executive Summary**

Health authorities, including the World Health Organization, agree that there is no safe level of exposure to second-hand smoke, (SHS) even outdoors.<sup>1</sup> Long term exposure to SHS can have serious negative health consequences including cancer, heart disease and premature death. Across Ontario, many local governments are taking action to protect residents from SHS in outdoor spaces such as playgrounds, sports fields, municipal property and patios. Smoke-free outdoor bylaws also promote positive role modeling to children and youth, protect the environment and reduce litter, and increase motivation for smokers to quit or cut back.

Scientific research in combination with a movement across Ontario to create smoke-free outdoor spaces lead Wellington-Dufferin-Guelph Public Health to conduct a community survey during the summer of 2013 to gage the level of local support for smoke-free outdoor spaces.

In total, 481 Wellington County residents completed a survey on smoking in outdoor spaces. The majority (79%) of respondents were between the ages of 25 and 64. Of respondents from Wellington County, 12% identified themselves as current smokers which is lower than the proportion of smokers in Wellington County as a whole and Ontario overall, therefore, smokers were somewhat under-represented in the survey results for Wellington County. Nearly half (44%) of respondents were parents with children under the age of 18, and a larger proportion of respondents were women (68%) than men.

Support for a smoke-free policy is particularly high among respondents from Wellington County, with 97% (465 of 480) of respondents supporting at least one of the smoke-free policy options. Support in Wellington County for a smoke-free policy on splash pads and pools, playgrounds, 9 metres from doorways to public places and workplaces, hospital grounds, property surrounding municipally owned buildings (i.e., libraries, municipal offices, and recreation centres) restaurant patios and sports fields is high. Further, the majority of respondents are in favour of a complete smoking ban at parks, bus stops, outdoor ice rinks, outdoor events such as parades, markets, fairs and festivals and in other outdoor recreational areas such as trails and picnic areas.

The main reasons cited in comments by respondents in support of smoke-free outdoor spaces include wanting to protect children from second-hand smoke, being bothered by exposure to second-hand smoke in public spaces and being bothered by litter caused by cigarette butts. Support for smoking bylaws by current smokers was lower in each of the areas surveyed than support from non-smokers. Concerns identified by individuals opposed to a smoke-free outdoor policy were that all people who litter and not just people who litter cigarette butts should be corrected, second-hand smoke is not an issue, infringement of personal rights, that smokers would be too marginalized if they couldn't smoke in these areas and that there are already too many laws.

Of Wellington County respondents, 51% agreed that they would feel comfortable asking someone who was smoking in a restricted area to stop or to move to an unrestricted area, which is consistent with research that shows smoke-free bylaws to be largely self-enforcing. Overall, high public support, strong scientific evidence and success in other municipalities indicate that a smoke-free outdoor spaces bylaw in Wellington County would promote health and positive role modeling, and create a healthier physical and social environment for all residents to enjoy.

The purpose of this report is four-fold:

- 1) To provide Wellington County and municipalities within with evidence about the health effects associated with second-hand smoke outdoors and how to mitigate them;
- 2) To describe local public opinion about a bylaw restricting smoking in outdoor public places from the smoke-free outdoor spaces survey results;
- 3) To provide an overview of municipalities in Ontario with existing smoke-free outdoor spaces bylaws and what they include;
- 4) To make recommendations to council, based on existing literature and public opinion data, on adopting a local smoke-free outdoor spaces by-law.

## **Background**

Tobacco use remains the leading cause of preventable illness and premature death in Ontario, killing about 13,000 Ontarians each year.<sup>2</sup> A substantial amount of evidence has confirmed that exposure to second-hand smoke (SHS) leads to adverse health effects such as heart disease, lung cancer and respiratory tract infections and premature deaths among exposed children and adults.<sup>1</sup> Health authorities (including the World Health Organization) agree that there is no safe level of exposure to second-hand smoke, even outdoors.

The effort to control second-hand smoke exposure in public places in Ontario began at the municipal level of government; with the first wave of 100% smoke-free indoor bylaws developed and passed by municipalities between 1995 and 1997. Together, the leadership of a few municipalities ultimately led to the development of the Smoke-Free Ontario Act (SFOA) which is considered a major milestone in tobacco control. The SFOA was successfully enacted provincially in 2006 as a result of a public education campaign highlighting the adverse health effects of SHS exposure in enclosed spaces.

The SFOA protects the public from exposure to second-hand smoke primarily in indoor public spaces such as workplaces and restaurants. The SFOA also prohibits smoking on all school and day nursery property (public and private) both indoors and on the grounds. It also prohibits the display of tobacco products at stores and strengthens the laws against sale of tobacco products

to minors in order to reduce tobacco exposure to youth. One year after the implementation of the SFOA, self-reported exposure to second-hand smoke among Ontarians decreased from 22.1% to 8.6% in restaurants illustrating the protective effect that the bylaw had on employees and patrons.<sup>3</sup> Although the SFOA protects children by prohibiting smoking outdoors on properties that contain day nurseries, elementary and high schools, it does not apply to other areas like parks and playgrounds that are highly used by children.

In Ontario today many municipalities have created bylaws that go beyond the SFOA to restrict smoking in outdoor spaces. In the WDG region, Orangeville successfully implemented a smoke-free outdoor spaces bylaw in June of 2012 which restricts smoking on municipally owned property, in parks and on trails. Section 115 of the Municipal Act authorizes the council of a local municipality to pass a bylaw to prohibit or regulate the smoking of tobacco in public places and workplaces within the municipality, and section 12 of the SFOA permits municipalities to enact smoking bylaws that are more restrictive than sections 9 and 10 of the Act. As of September 2013, 93 municipalities in Ontario have passed their own legislation to protect residents from SHS outdoors, though the bylaws do vary widely in the degree of protection provided.

Bylaws restricting smoking in outdoor spaces are important because they:

- Promote positive role modeling for children and youth;
- Protect the environment, reduce cigarette litter and fire risk;
- Provide protection to the public from direct exposure to second-hand smoke and;
- Create supportive environments for those who are interested in cutting back or quitting smoking.

Public support for smoke-free outdoor spaces in Ontario is high. A recent survey conducted in 2012 by the Ontario Tobacco Research Unit found that 88% of Ontarians support smoke-free children's playgrounds.<sup>4</sup> Evidence from other municipalities in Ontario shows that smoke-free outdoor space bylaws tend to be self-enforcing and complaint driven if the bylaw is supported in the community and accompanied by strong public education, appropriate signage and enforcement if necessary. A study conducted by the University of Waterloo in 2012 reviewed 44 communities in Ontario with a smoke-free outdoor spaces bylaw in effect for a minimum of 2 years and found that 95% of municipalities used signage to support awareness of the bylaw; 76% used bylaw enforcement officers (municipal staff) to enforce the bylaw; 57% had issued warnings; and 16% reported issuing tickets with the majority of those issuing 1 or 2 tickets since the bylaw came into effect. The study also found that all municipalities used a "grace period" system and that no municipality reported that they had hired additional enforcement staff as a result of their community's smoke-free bylaw; rather, existing bylaw officers have managed

complaints and non-compliance.<sup>5</sup> The initial phase of enforcement generally consists of awareness raising and education, and then moves towards warnings and/or charges as appropriate.

## **Methods**

Between May 31 and August 20, 2013 Public Health administered a survey to Wellington, Dufferin and Guelph (WDG) residents (Appendix C). The survey was created using an online questionnaire tool called FluidSurveys and was made available on the Public Health website, via email (providing a link to the survey), over the phone, by scanning the QR code, in-person at local outdoor events or by picking up a paper copy at a Public Health office.

In Wellington County, the survey was promoted by social media (Facebook, Twitter), through community partners and stakeholders (libraries, OPP, local fire departments, Wellington Chamber of Commerce, Arthur Chamber of Commerce, Fergus and Elora BIAs, municipal websites, family health teams, medical centres, churches, arenas, community centres, Early Years Centres, Upper Grand District School Board, Humane Society, soccer clubs, sports clubs, local businesses, etc.), and by sending a letter to the Wellington County Warden and Council, as well as each of the local Mayors and Council members.

The survey was also promoted through paid media in the Wellington Advertiser and earned media in the Guelph Mercury, Guelph Tribune, Wellington Advertiser and CBC Waterloo, as well as through posters, postcards and in-person at local events and festivals such as the Puslinch minor soccer tournament, Fergus Relay for Life, Food Festival, Arthur Art in the Street, Elora Art in the Yard, Mt. Forest Fireworks Festival and local farmers markets. Additionally, local youth were involved throughout the entire project to help with community engagement, conducting surveys and educating younger children about tobacco and smoke-free outdoor spaces.

The quantitative data collected through the survey was analyzed using Microsoft Excel and PowerPivot. NVivo software was used to analyze the qualitative data additional comments provided by respondents in an open ended text box on the survey. A sample size calculator was used to determine the sample sizes (i.e., number of responders) required in order for the survey results to accurately reflect the populations in the respective communities.

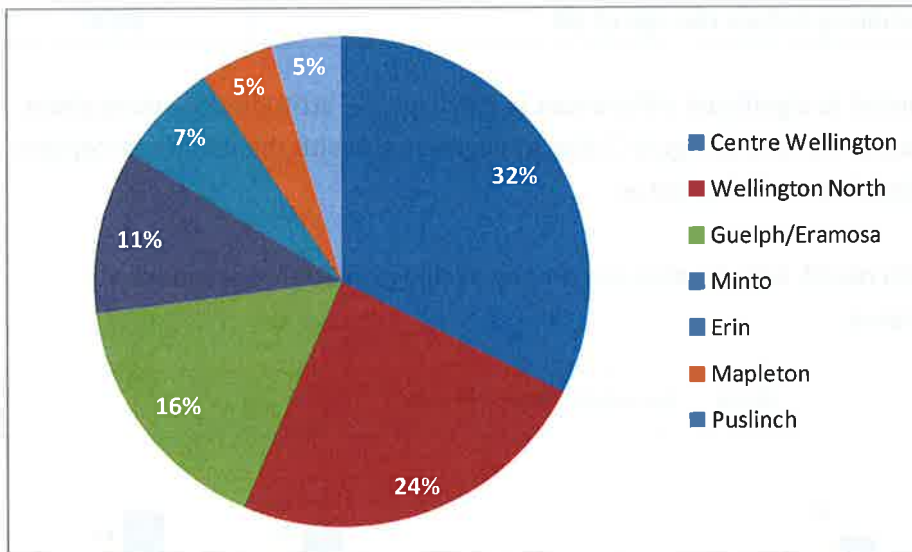
## Results

See Appendix B for a 1 page summary of survey results.

### Demographics

In total, 481 Wellington County residents completed the survey, well exceeding the minimum sample of 384 required. Survey respondents from Wellington County ranged in age from under 17 to over 65; however, the majority of respondents were between the ages of 25 and 64 (79%). A much higher proportion of survey respondents were female (68%). Among survey respondents from Wellington, 44% identified themselves as parents of children under 18 years old. Finally, 12% of respondents from Wellington County identified themselves as current smokers which is lower than the Ontario rate of 18%.<sup>4</sup>

**Figure 1** Breakdown of Wellington County respondents by municipality



### Health Beliefs

Survey respondents were asked whether they agree, disagree or are undecided about six health statements. Responses from the Wellington County respondents are summarized in Table 1.

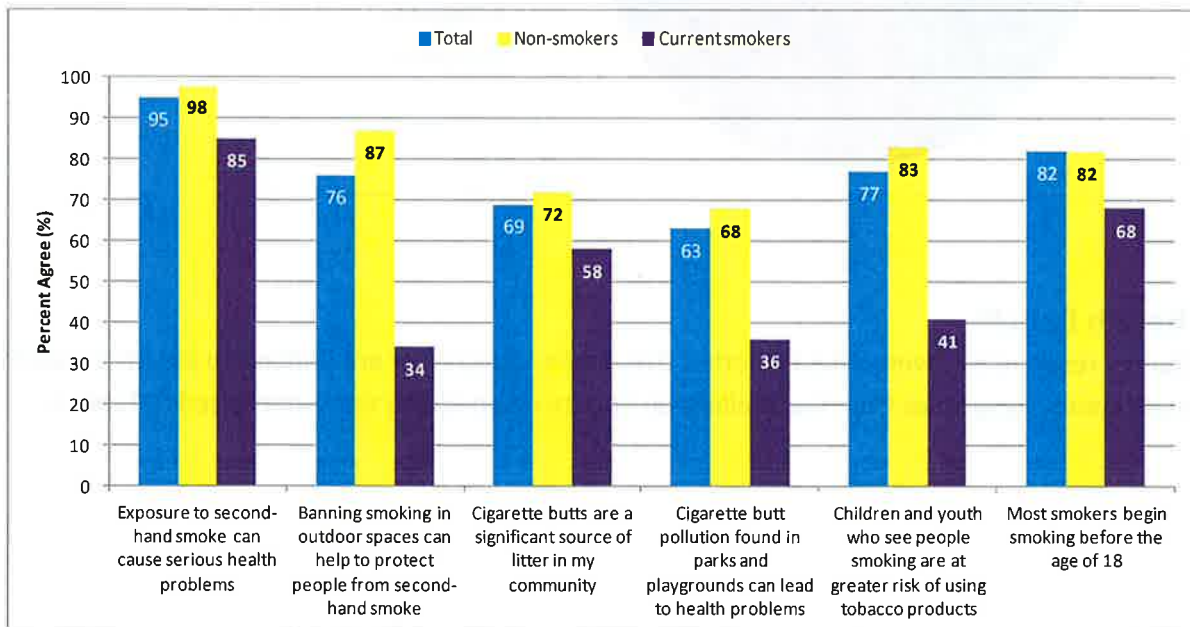


**Table 1** Percent agreement for the health belief statements among Wellington County respondents

Health Perception Statements	Percent Agreement
Exposure to second-hand smoke can cause serious health problems	95%
Banning smoking in outdoor spaces can help to protect people from second-hand smoke	76%
Cigarette butts are a significant source of litter in my community	69%
Cigarette butt pollution found in parks and playgrounds can lead to health problems	63%
Children and youth who see people smoking are at greater risk of using tobacco products	77%
Most smokers begin smoking before the age of 18	82%

Smoking status contributed to significant differences in participants' attitudes/opinions about smoking in outdoor spaces. Therefore, Figure 2 displays agreement with the health perception statements stratified based on smoking status.

**Figure 2** Agreement with health belief statement among Wellington County respondents stratified by smoking status



## **Support for 100% Smoke-Free Policies**

Survey participants were also asked about whether or not they supported a number of different policy options for restricting smoking outdoors. Support for some form of outdoor smoking restriction in Wellington County was very high, with 97% of respondents supporting at least one of the smoke-free policy options. Overall, the results of the survey show a high level of support for smoke-free outdoor spaces in Wellington County compared to Ontario. For example, 76% of Wellington County residents support a ban on smoking on restaurant patios and 63% support a smoking ban on bar patios, compared to 57% of Ontarians. In the general population of Ontario, support for smoke-free parks is 55% whereas in Wellington County 68% of total respondents support smoke-free parks.<sup>4</sup> Generally, support for smoke-free outdoor spaces was higher among non-smokers and parents than smokers and non-parents. Support from Wellington residents for each of the 13 smoke-free outdoor space policy options is shown in Appendix A, which also displays the differing levels of support based on smoking status.

Among respondents from Wellington County, support for smoke-free outdoor pools and splash pads had the highest level of support (92%), followed by support for smoke-free playgrounds (90%), 9 metres from doorways (83%), hospital grounds (83%), municipal property (78%), restaurant patios (76%), sports fields (75%), bus stops (73%), outdoor ice rinks (69%), parks (68%), outdoor special events (66%), other outdoor recreational areas (65%) and bar patios (63%).

Support among non-smokers was higher in all cases ranging from 94% support for splash pads, outdoor pools and playgrounds to 74% for bar patios. On average, support from non-smokers, who form the majority of the population (82%) was 44% higher than support from current smokers who form the minority of the population (18%). Support from current smokers ranged from 83% support for smoke-free splash pads and outdoor pools to 12% for smoke-free bar patios.

Among respondents from Wellington County, 51% agreed (39% disagreed, 10% preferred not to answer) to the final question asking whether they “would feel comfortable asking someone who was smoking in a restricted area to stop smoking or to move to an unrestricted area.” This suggests that a bylaw with appropriate signage would:

1. Support the residents who do not feel comfortable addressing this issue on their own (39% of Wellington residents);
2. Support residents who are willing to ask someone who is smoking in a restricted area to stop or move (51% of Wellington residents) by making reference to a law and signage and;

3. Be largely self-enforcing since 1 in 2 people are willing self-enforce the bylaw.

These results are consistent with research and experiences in other municipalities that show that smoke-free outdoor spaces bylaws tend to be mostly self-enforcing, requiring no additional enforcement staff.

### **Qualitative Statements**

Of the 481 survey respondents from Wellington County, 108 (22%) provided a comment in the open-ended comment box. By far, the main theme identified from respondents supportive of creating a smoke-free outdoor space bylaw was protection of children from second-hand smoke. The second most common theme cited by this group was about being bothered by exposure to second-hand smoke in public spaces. Other themes identified by this group were being bothered by litter caused by cigarette butts, wanting to include apartments and other multi-unit dwellings (which was not listed on the survey) in the bylaw, having health issues aggravated by second-hand smoke exposure when they go out in public and feeling excluded from patios, outdoor events and recreation due to fear of second-hand smoke exposure.

Others who left comments were not in favour of any type of smoke-free outdoor spaces bylaw. By far the main theme cited by this group was that the bylaw would be an infringement on personal rights and freedoms. Other themes identified were that all people who litter and not just people who litter cigarette butts should be corrected; that second-hand smoke is not an issue; infringement of personal rights; that all air pollution should be regulated not just tobacco smoke; that smokers would be too marginalized; that there are already too many laws; and that partial bans or designated smoking areas would be better than 100% smoke-free areas.

The remaining comments were neither for nor against a bylaw. Many of these neutral comments were from people who classified themselves as respectful smokers who were upset by other smokers that litter and smoke in areas that bother other people giving the smoking population overall a bad reputation. Other general comments were primarily themed about concern for how the bylaw could be enforced, that good signage would be important and stories about personal experiences.

### **Recommendations**

1. Taking into account high local public support, health evidence associated with the effects of SHS and the success of smoke-free outdoor spaces bylaws in other Ontario municipalities, Public Health recommends the development of a comprehensive smoke-free outdoor spaces bylaw throughout Wellington County. Public Health recommends that Wellington County create a bylaw to prohibit outdoor smoking on all municipally owned properties including parks, playgrounds, sports fields, splash pads and bus

shelters, as well as on restaurant patios and 9m from doorways to public places and workplaces.

2. Public Health recommends that the bylaw consists of a complete smoking ban in these outdoor locations rather than a partial ban. A blanket ban that does not make exceptions more closely aligns with what more than 90 other municipalities have done across the province and is considered best practice. A complete ban is more effective, easier to communicate and easier to enforce.
3. Public Health recommends that the bylaw includes a system or process for event organizers and private businesses to apply for or create smoke-free events and properties. This could include festivals, fairs, fundraising events and sporting events.
4. Public Health recommends that public education rather than enforcement is used to implement the bylaw. A strong public educational component has been demonstrated to be more effective in garnering public support and ensuring compliance.
5. Public Health recommends that positive messaging rather than anti-smoking messaging is used in a public education campaign to accompany the bylaw. A focus on the healthy and constructive benefits of a complete ban rather than the negative aspects of smoking is important as the issue of SHS is controversial and continues to polarize as seen in the survey comments. A campaign emphasizing resident's reasons for supporting the bylaw, as listed in the qualitative section would help to keep the message positive and encouraging.
6. Public Health recommends that appropriate signage be used to indicate smoke-free outdoor areas outlined by the bylaw. Proper signage increases public awareness of and compliance with outdoor smoking restrictions.

## **Conclusion**

Wellington-Dufferin-Guelph Public Health can support the Wellington County to move forward on these recommendations in a number of ways. These include, but are not limited to consultations with staff, providing additional required evidence, delivering presentations to council, drafting a bylaw, supporting an educational campaign to implement the bylaw, creating an enforcement plan, and training enforcement officers.

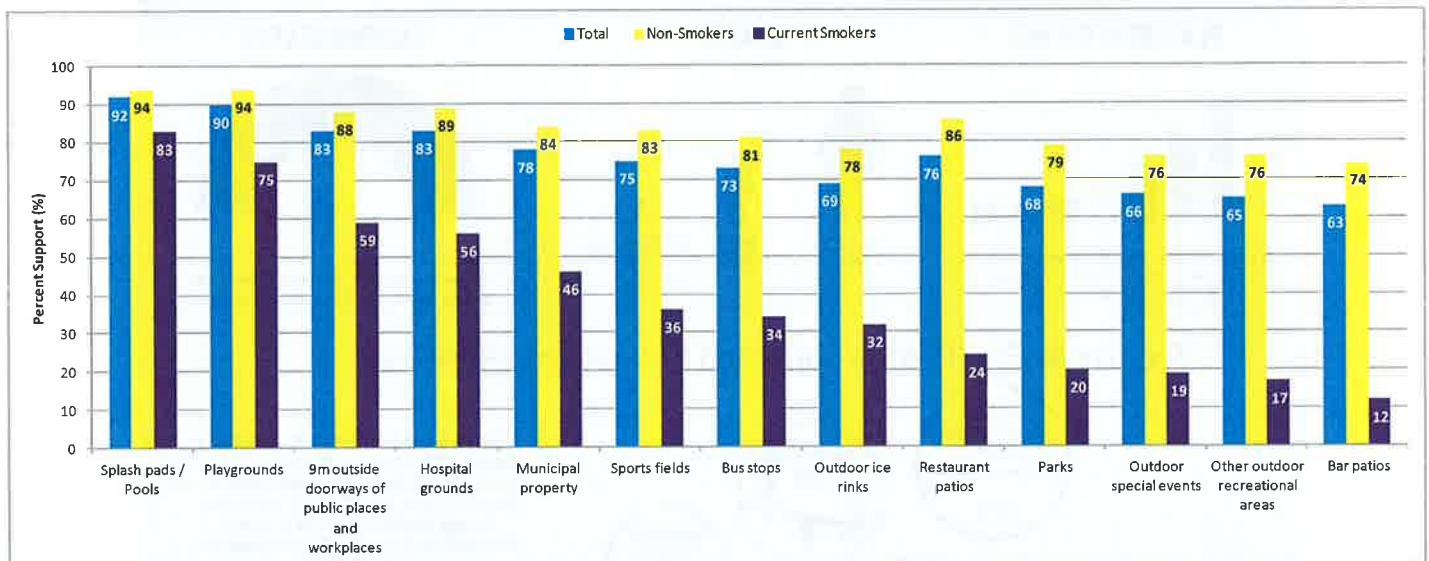
Support for smoke-free outdoor spaces in the Wellington County is high with 97% of the 481 survey respondents supporting 1 or more smoke-free outdoor spaces policies. This high level of public support combined with the positive experiences from other Ontario municipalities that have already implemented comprehensive smoke-free outdoor spaces bylaws is a good indication that a smoke-free outdoor spaces bylaw in Wellington County would be effective and supported by the community.

## References

- <sup>1</sup> World Health Organization. (2003). Framework Convention on Tobacco Control. Geneva, Switzerland.
- <sup>2</sup> Rehm J, Baliunas D, Brochu S, Fischer B, Gnam W, Patra J et al. (2006). *The costs of substance abuse in Canada 2002*. Canadian Centre on Substance Abuse. Ottawa, Canada.
- <sup>3</sup> Dubray, J., Schwartz, R. (May 2010). *Formative Evaluation of the Smoke-Free Ontario Act: Comprehensive Report*. Ontario Tobacco Research Unit, Special Report Series. Toronto, ON.
- <sup>4</sup> Ontario Tobacco Research Unit. (November 2012). *Smoke-Free Ontario Strategy Evaluation Report (Special Report)*. Toronto, Ontario: Tobacco Research Unit.
- <sup>5</sup> Kennedy, R.R., Zummach, D., Filsinger, S., Leatherdale, S.T. (March 2013) *Reported Municipal Costs from Outdoor Smoke-free bylaws – the Ontario Experience*. Society for Research in Nicotine and Tobacco 2013 International Meeting. Boston, MA, USA.

## APPENDIX A

Support for 100% smoke-free policy among Wellington County respondents stratified by smoking status

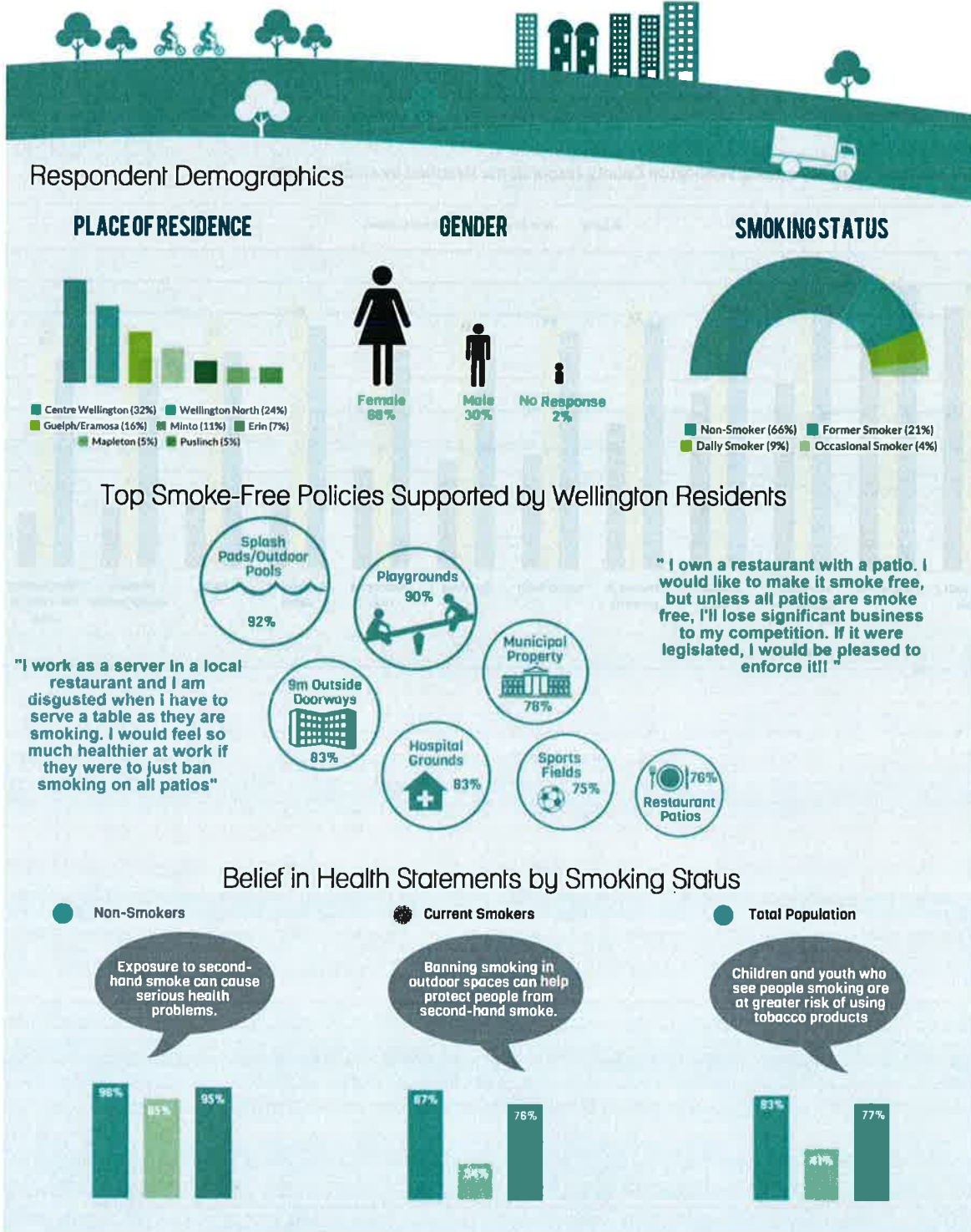


# APPENDIX B

## Key Survey Findings

# Smoke-Free Outdoor Spaces

## Survey Results from Wellington County



## APPENDIX C

# Smoking in Outdoor Spaces Survey

---

Smoking in Outdoor Spaces important survey information: Purpose: The purpose of this survey is to collect feedback from residents of Wellington, Dufferin and Guelph about smoking in outdoor public spaces. Your responses are important and will help to shape policy recommendations that will be made to the each of the municipalities in WDG. What does participation involve? This survey should take about 5 minutes to complete. You should not feel obligated to answer any questions that make you feel uncomfortable. You may withdraw from the survey at any time without consequence. Risks: There are no known risks associated with this survey and your anonymity will be secured. All responses will be kept confidential. If you choose not to participate in this project, there will be no adverse consequences. The results of this survey will be published in a written report. If you are interested in receiving a copy of the study findings or have any questions regarding the survey, you can contact Laura Campbell at [laura.campbell@wdgpublichealth.ca](mailto:laura.campbell@wdgpublichealth.ca) or (519) 846-2715 ex. 3711. Incentive: At the end of the survey you will be asked if you would like to have a chance to win a prize. If you respond "yes" to this question, you will be asked to provide personal contact information. Your contact information will never be connected with your survey responses.

By selecting "I agree to participate" below you confirm that you:

1. Understand what is required based on reading the information above
2. Understand that your participation is voluntary and you are free to withdraw at any time
3. Understand that your responses will be kept confidential.

- I agree to participate
- I do not agree to participate

The information on this form is collected under the authority of the Health Protection and Promotion Act in accordance with the Municipal Freedom of Information and Protection of Privacy Act and the Personal Health Information Protection Act. This information will be used for the delivery of public health programs and services; the administration of the agency; and the maintenance of healthcare databases, registries and related research, in compliance with legal and regulatory requirements. Any questions about the collection of this information should be addressed to the Chief Privacy Officer at 1-800-265-7293 ext 2975.

Where do you live?



- Amaranth
- Centre Wellington
- City of Guelph
- East Garafraxa
- East Luther Grand Valley
- Erin
- Guelph/Eramosa
- Mapleton
- Melancthon
- Minto
- Mono
- Mulmur
- Orangeville
- Puslinch
- Shelburne
- Wellington North
- Prefer not to answer
- Other, please specify... \_\_\_\_\_

### What is your age?

- 17 or under
- 18-24
- 25-34
- 35-44
- 45-54
- 55-64
- 65 or older
- Prefer not to answer

### What is your gender?

- Female

- Male
- Prefer not to answer
- Other \_\_\_\_\_

**Are you a parent or guardian of a child under 18 years of age?**

- Yes
- No
- Prefer not to answer

**Do you smoke cigarettes and/or other lit tobacco products (e.g. cigars)?**

- No
- No, but I used to
- Yes, occasionally (smoked in the last 30 days but not every day)
- Yes, daily
- Prefer not to answer

**Do you agree or disagree with the following statements?**

	Agree	Disagree	Undecided	Prefer not to answer
Exposure to second-hand smoke can cause serious health problems	<input type="radio"/>	<input type="radio"/>	<input type="radio"/>	<input type="radio"/>
Banning smoking in outdoor spaces can help to protect people from second-hand smoke	<input type="radio"/>	<input type="radio"/>	<input type="radio"/>	<input type="radio"/>
Cigarette butts are a significant source of litter in my community	<input type="radio"/>	<input type="radio"/>	<input type="radio"/>	<input type="radio"/>
Cigarette butt pollution found in parks and playgrounds can lead to health problems	<input type="radio"/>	<input type="radio"/>	<input type="radio"/>	<input type="radio"/>
Children and youth who see people smoking are at greater risk of using tobacco products	<input type="radio"/>	<input type="radio"/>	<input type="radio"/>	<input type="radio"/>
Most smokers begin smoking before the age of 18	<input type="radio"/>	<input type="radio"/>	<input type="radio"/>	<input type="radio"/>

**Do you support or oppose a 100% smoking ban in the following outdoor spaces:**

	Support	Oppose	Neither support or oppose	Prefer not to answer
Parks	<input type="radio"/>	<input type="radio"/>	<input type="radio"/>	<input type="radio"/>
Playgrounds	<input type="radio"/>	<input type="radio"/>	<input type="radio"/>	<input type="radio"/>
Outdoor sports fields	<input type="radio"/>	<input type="radio"/>	<input type="radio"/>	<input type="radio"/>
Other outdoor recreational areas (e.g. trails, picnic areas)	<input type="radio"/>	<input type="radio"/>	<input type="radio"/>	<input type="radio"/>
Splash pads or outdoor pools	<input type="radio"/>	<input type="radio"/>	<input type="radio"/>	<input type="radio"/>
Outdoor special events (e.g. festivals, markets, fairs)	<input type="radio"/>	<input type="radio"/>	<input type="radio"/>	<input type="radio"/>
Municipal properties (e.g. library, recreation centre, municipal office (outside the building))	<input type="radio"/>	<input type="radio"/>	<input type="radio"/>	<input type="radio"/>
9 m outside of doorways to public places and workplaces	<input type="radio"/>	<input type="radio"/>	<input type="radio"/>	<input type="radio"/>
Outdoor ice rinks	<input type="radio"/>	<input type="radio"/>	<input type="radio"/>	<input type="radio"/>
Bus stops	<input type="radio"/>	<input type="radio"/>	<input type="radio"/>	<input type="radio"/>
Hospital grounds	<input type="radio"/>	<input type="radio"/>	<input type="radio"/>	<input type="radio"/>
Restaurant patios	<input type="radio"/>	<input type="radio"/>	<input type="radio"/>	<input type="radio"/>
Bar patios	<input type="radio"/>	<input type="radio"/>	<input type="radio"/>	<input type="radio"/>
Provincial parks	<input type="radio"/>	<input type="radio"/>	<input type="radio"/>	<input type="radio"/>

Please indicate your level of agreement with the following statement:

	Agree	Disagree	Undecided	Prefer not to answer
I would feel comfortable asking someone who was smoking in a restricted area to stop smoking or to move to an unrestricted area.	<input type="radio"/>	<input type="radio"/>	<input type="radio"/>	<input type="radio"/>

Please feel free to add any additional comments

Thank you for completing this survey about smoking in outdoor spaces in Wellington, Dufferin, and Guelph. Please click submit to complete the survey.

**RECRUITMENT OF CHAIR  
OF THE HALTON-  
HAMILTON SOURCE  
PROTECTION  
COMMITTEE**

**KELSO/CAMPBELLVILLE  
TIER 3 RISK  
ASSESSMENT**

**UPDATED CSA  
STANDARD FOR EARTH  
ENERGY SYSTEMS**

**SOURCE WATER  
PROTECTION OFEC  
FRAMEWORK**

**THREAT VERIFICATION**

**SOURCE PROTECTION  
PLAN REVIEW**

**VACATIONS**

For additional information  
on any of these topics  
please contact:

Diane Bloomfield  
dbloomfield@hrca.on.ca

Or

Virginia Bancur  
vbancur@hrca.on.ca

**RECRUITMENT OF CHAIR OF THE HALTON-HAMILTON SOURCE  
PROTECTION COMMITTEE**

As you are aware, the Provincial Appointments Secretariat advertised the position of chair of the Halton-Hamilton Source Protection Committee. I have been informed that they received five applications. The Province is developing a selection process which will include the screening of applications, interviewing of potential candidates, and the selection and appointment of a new chair. Section 7 (4) of the *Clean Water Act, 2006* requires that the Minister of the Environment consider recommendations made by the source protection authority. The authority has not yet been informed of how they will be included in the selection process. MOE Source Protection Branch indicated that it may take until December for a chair to be appointed.

In an e-mail sent October 1 Diane Bloomfield requested that members of the Source Protection Committee interested in filling the position of interim chair (until a chair is appointed by the Minister of the Environment) make her known of your willingness to stand by October 8 to begin the selection process. Diane will circulate a list of candidates to all members and each Committee member will be asked to send their selection from that list to Ken Phillips, CAO of Conservation Halton. A condition of the selection is the ability of the candidate to attend a Source Protection Chairs' meeting to be held over two days in November.

**KELSO/CAMPBELLVILLE TIER 3 RISK ASSESSMENT**

The risk assessment report is the final report for a Tier 3 assessment of the sustainability of a municipal water supply. This report has been produced for the Kelso/Campbellville study and is under review by the peer review team. The draft report indicates that the Campbellville system is at low risk including during a drought period. The Kelso system was identified as at low risk from a water quantity perspective including a drought scenario, and at a significant risk in relation to other water use considerations related to aquatic habitat. This significant risk is based on a modeled scenario of existing land cover with water taking at the maximum value of Kelso's permit to take water. This result has been realized for other municipal water systems in Ontario and MNR and MOE have been discussing a course of action. It is expected that the risk level will be reduced to moderate since the municipality already has a permit to take water. It is also expected that the municipality will use the study results to make decisions on operating practices, etc. to try to avoid the potential impacts on aquatic habitat.

If the peer review team signs off on the study as reported this project will be complete. And, if we are directed by the MOE to revise the risk level of the Kelso system to moderate, it will be a decision of the SPC whether water quantity policies will be included in the Source Protection Plan. Any policy included will not have mandatory action since the threat would not be significant.

**UPDATED CSA STANDARD FOR EARTH ENERGY SYSTEMS**

The Canadian Standards Association has updated C448—Design and installation of earth energy systems. The Ontario Geothermal Association reports that some of the major changes made were to requirements for:

- Borehole decommissioning and abandonment
- Drilling
- Excavating
- Backfilling

This standard is relied on by the municipal building officials and hopefully will assist the municipalities with implementation of proposed policy O-1-S g.

Municipalities are requested to prepare bylaws/procedures/processes that ensure the construction of closed loop, earth energy systems within wellhead protection areas A and B will not result in the establishment of transport pathways.

## Halton-Hamilton Source Protection staff:

Project Manager—Diane  
Bloomfield  
dbloomfield@hrca.on.ca

Project Assistant—Virginia  
Bancur  
vbancur@hrca.on.ca

GIS/Data Specialist—Jeff  
Lee  
jlee@hrca.on.ca

Hydrogeologist—Jacek  
Strakowski  
jstrakowski@hrca.on.ca

## Conservation Authority Liaisons:

Conservation Halton—Kathy  
Menyes  
kmenyes@hrca.on.ca

Hamilton CA—Scott Peck  
tspeck@conservationhamilt  
on.ca

**MOE Liaison:**  
Kate Turner  
Kate.turner@ontario.ca

**Health Liaison:**  
Dave King  
dave.king@hamilton.ca

## SOURCE WATER PROTECTION OFEC FRAMEWORK

The Ontario Farm Environmental Coalition (OFEC) has been developing a tool to aid farmers affected by source protection policies with their negotiations with risk management officials when risk management plans are required. Gavin Smuk and Nick DiGirolamo have been updating us on this tool at Committee meetings.

On September 16, Diane Bloomfield attended a provincial workshop hosted by the Ontario Farm Environmental Coalition (OFEC) for risk management officials and inspectors and conservation authority staff. The objective of the workshop was to present the results of the pilot testing program for the assessment tool. Five case studies were presented.

The tool is a self-assessment of the level of effort that a farmer has undertaken for activities associated with drinking water threats under the *Clean Water Act*. The farmer ranks his/her efforts as not meeting, meeting or exceeding the current standards, which will be helpful when negotiating compliance with the source protection plan policies. However, the tool does not relate the activities on the farm to the specific source protection plan policies that apply and in one case study the farmer completed the exercise only to find out from the RMO that none of the activities require a risk management plan. The RMO suggested that the farmer contact the RMO to confirm which significant threats require a risk management plan prior to undertaking any assessment.

OFEC has sought feedback on the tool from participants of the pilot program and from others. They will be finalizing the document by the end of October.

## THREAT VERIFICATION

Letters have been sent to nineteen landowners that have been identified as having significant drinking water threats occurring on their properties but assumptions were made in the initial assessments and confirmation of the threat is outstanding. Response to the letters has been minimal and follow up phone calls will occur soon when phone numbers are known. If a threat cannot be verified they will continue to be counted and the appropriate risk management official will be required to follow-up. One response received resulted in the removal of an agricultural threat for the use of pesticide in the Carlisle area.

## SOURCE PROTECTION PLAN REVIEW

We have not received the final comments from the MOE yet, however, they are still stating "fall" as a due date. As soon as the comments are received they'll be sent out and the date for a Source Protection Committee meeting will be confirmed. Staff recommendations will follow prior to the meeting.

**Please hold December 17 for a SPC meeting starting at 1 pm and finishing at 5 pm. Since we don't have the comments we don't know how long the discussion will take.**

## VACATIONS

Diane Bloomfield will be on vacation November 6 through 27. If the MOE comments are received during this time, Virginia Bancur will send them out and confirm the meeting for December 17. Please contact Virginia in Diane's absence.

If you will be away this fall/winter we'd appreciate hearing when so we can work around your vacations. Please send an e-mail to Virginia Bancur.



RECEIVED  
OCT 01 2013  
Township of Puslinch

905.336.1158  
Fax: 905.336.7014  
2596 Britannia Road West  
Burlington, Ontario L7P 0G3  
conservationhalton.ca

Protecting the Natural  
Environment from  
Lake to Escarpment

September 23, 2013

Mayor Lever and Members of Council  
c/o Karen Landry, Clerk-Treasurer  
Township of Puslinch  
R. R. # 3  
Gueiph, Ontario  
N1H 6H9

CLERK'S DEPARTMENT	
TO	MH ✓
Copy	
Please Handle	
For Your Information	✓
Council Agenda	Oct 16/13
File	

Dear Mayor Lever and Members of Council:

**Re: Conservation Halton 2014 Budget**

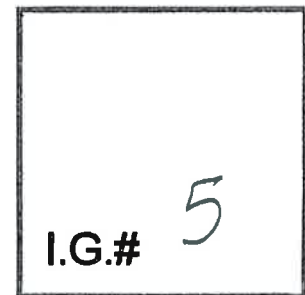
Please be advised that the 2014 Budget for Conservation Halton will be presented by staff to the Conservation Halton Board of Directors on October 24, 2013 and considered for approval.

In accordance with the Conservation Authorities Act we are hereby providing you with 30 days notice with regard to our budget presentation at the full Board.

Please contact me if you have any questions or concerns regarding the Conservation Halton 2014 Budget.

Yours truly,

Ken Phillips  
CAO/Secretary-Treasurer



cc Marnie Piggot, Director Financial and Administrative Services

Karen

# HAMILTON REGION CONSERVATION AUTHORITY

## MINUTES

### Board of Directors Meeting

September 5, 2013

RECEIVED I.G.#

OCT 02 2013

Township of Puslinch

Minutes of the Board of Directors meeting held on Thursday, September 5, 2013 at Woodend Auditorium, 838 Mineral Springs Road, Ancaster, Ontario at 7:00 p.m.

**PRESENT:** Brian McHattie, in the Chair  
Dan Bowman  
Tom Jackson  
Duke O'Sullivan  
Maria Topalovic

Chad Collins  
Santina Moccio  
Robert Pasuta  
Brad Whitcombe

Richard MacDonald, Foundation Chair

**PHONE:** James Howlett

**REGRETS:** Brad Clark

CLERK'S DEPARTMENT	
To	Council
Copy	
Please Handle	
For Your Information	
Council Agenda	✓ Oct 16/13
File	

**STAFF PRESENT:** Joan Bell, Hazel Breton, Lisa Burnside, Chris Firth-Eagland, Bruce Harschnitz, Tony Horvat, Darren Kenny, Judy Love, Bruce Mackenzie, Neil McDougall, and Scott Peck – HCA Staff

**OTHERS:** Richard Leitner – Media

#### 1. CALL TO ORDER

The Chair called the meeting to order and welcomed everyone present.

#### 2. DECLARATIONS OF CONFLICT OF INTEREST

The Chair asked members to declare any conflicts under the Board's Governance Policy. There were none.





#### 4.2 Amendment to Discharge Date – Maple Leaf Foods/Rothsay

Brian McHattie introduced David Willison, Plant Manager from Rothsay. David Willison provided a PowerPoint presentation.

Rothsay has requested an extension for their fall discharge period so that wastewater can be discharged a month earlier. The discharge is released into a pond located on Rothsay property before being released into a wetland that flows into Pond 4 at Christie Lake Conservation Area. The request for an extension is required to facilitate the removal of an existing filter system and the installation of a replacement Dynasand polishing continuous backwash sand filter.

Extensions of the discharge period must be approved by the HCA as per conditions as specified in their Environmental Compliance Approval.

HCA staff and Rothsay are working to develop and implement a monitoring protocol to review the impact of the discharge on HCA lands and receiving watercourses. Rothsay has committed to support and fund additional testing during this year's discharge.

Brian McHattie thanked David Willison for attending our meeting.

**BD12,1882**

**MOVED BY: Robert Pasuta  
SECONDED BY: Duke O'Sullivan**

**THAT the Board of Directors approve the following recommendation:**

**THAT, provided the wastewater to be discharged complies with all standards identified in Rothsay's Environmental Compliance Approval (formerly known as Certificate of Approval) for wastewater works as issued by the Ministry of Environment (MOE), the HCA will permit an early commencement of the normal fall discharge period on October 1, 2013; and**

**THAT all regular testing of wastewater continue by Rothsay and the Ministry of Environment for the early discharge period of October 1, 2013 to October 31, 2013; and,**

**THAT monitoring of parameters to be determined by staff be carried out, at the expense of Rothsay, at locations as determined through discussions with HCA staff and Rothsay; and further**

**THAT Rothsay report on the results of the early commencement of the normal fall discharge period to HCA and MOE staff.**

**CARRIED**

**4.3 Line 10 and Line 11 Westover Segment Replacement Project**

Brian McHattie introduced Chris Lupaschuk, Brian Cikaluk, and Jeannette Gasser from Enbridge. Brian Cikaluk provided an overview on the Line 10 and Line 11 Westover Segment Replacement Project.

Enbridge is currently in the development stage for both projects.

The Line 10 Replacement Project work includes:

- The proposed replacement of 6 segments of existing pipeline between the Westover Station and the Nanticoke Junction. A total of 33 km of existing pipeline and one existing isolation valve (Powerline Road) will be replaced to address pipeline features identified during pipeline inspection versus completing integrity digs.

The Line 11 Replacement Project work includes:

- The proposed replacement of one 3 km segment of the existing Line 11 pipeline downstream of the Westover Station in the new ROW, to address pipeline features identified during pipeline inspection versus completing integrity digs.

Pending all required regulatory approvals, construction will start in the summer 2014.

Brian Cikaluk answered Board member's questions. Brian McHattie thanked the Enbridge staff for attending our meeting and providing an overview of the project. The Board asked staff to keep the Board members updated and to report back to the Board.

**5. MEMBER BRIEFING**

**5.1 Remedial Action Plan (RAP) and Bay Area Restoration Council (BARC)**

Brian McHattie introduced John Hall, RAP Coordinator and Kristin O'Connor, RAP Researcher/Report Writer. Kristen O'Connor provided a brief presentation and indicated that the water quality and fish habitat has improved in the harbour.

Kristen O'Connor also provided a brief update for BARC. She indicated that climate change is one of the challenges that they face and the next action plan is to reduce the phosphorus and sediment in the harbour.

Kristen thanked our staff and appreciates HCA's participation in bringing the harbour back.

Brian McHattie thanked Kristen and John for the informative update.

**6. APPLICATIONS - DEVELOPMENT, INTERFERENCE WITH WETLANDS, AND ALTERATIONS TO SHORELINES AND WATERCOURSES**

(Copies of the supporting staff report are available from the Authority's Administration Office)

Darren Kenny presented the report and answered Board member's questions.

**BD12,1883**

**MOVED BY**

**Santina Moccio**

**SECONDED BY**

**Dan Bowman**

**THAT the Board of Directors receive the Summary Enforcement Report SER – 7/13.**

**CARRIED**

**7. MINUTES OF PREVIOUS MEETING (July 4, 2013)**

**BD12,1884**

**MOVED BY:**

**Robert Pasuta**

**SECONDED BY:**

**Duke O'Sullivan**

**THAT the Board of Directors approve the following recommendation:**

**THAT the minutes of the Board of Directors meeting held on July 4, 2013 be approved.**

**CARRIED**

**8. BUSINESS ARISING FROM THE MINUTES**

There was none.

**9. PRE-DISTRIBUTED CORRESPONDENCE**

There was none.

**10. OTHER CORRESPONDENCE**

There was none.

**11. REPORTS****11.1 Conservation Advisory Board (Minutes – July 11, 2013)**

Maria Topalovic presented the minutes of the Conservation Advisory Board meeting held on July 11, 2013 and indicated that there were no motions requiring Board of Directors approval.

**Motion to Receive the Minutes****BD12,1885****MOVED BY: Maria Topalovic****SECONDED BY: Santina Moccio**

**THAT the minutes of the Conservation Advisory Board held on July 11, 2013 be approved.**

**CARRIED****11.2 Foundation Chairman's Report**

Richard MacDonald reported on the following:

- Total Donations – for July - \$34,210 and for August \$16,032
- EcoPark Campaign continues to be a major focus for the Foundation
- The Foundation sold 500 cacti at the Dundas Cactus Festival
- Promoted the EcoPark at the Greenbelt Harvest Picnic
- Next Nature Crawl Event is the "Fall Colour Bus Tour of the EcoPark on October 19

**12. OTHER STAFF REPORTS/MEMORANDUMS****12.1 Upcoming Events**

Bruce Mackenzie provided an update of the upcoming events that are included in the agenda package.

**12.2 Construction Tender – Desjardins Canal Park Enhancement Project**

Tony Horvat presented the report. The tender is required to prepare the site for the clean fill cap required by MOE.

**BD12,1886****MOVED BY: Chad Collins  
SECONDED BY: Tom Jackson****THAT the Board of Directors approve the following recommendation:****THAT the tender for this project be awarded to:****G.S. Wark Limited, Hamilton****For a total cost of \$497,900 including HST and a \$20,000 contingency sum.****CARRIED****13. NEW BUSINESS**

There was no new business.

**14. IN-CAMERA ITEMS FOR MATTERS OF LAW, PERSONNEL AND PROPERTY**

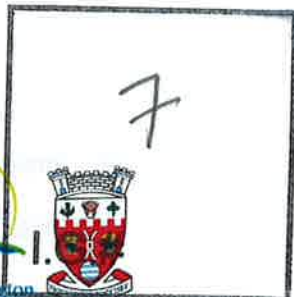
There were no in-camera items.

**15. NEXT MEETING**

The next meeting of the Board of Directors will be held on Thursday, October 3, 2013 at 7:00 p.m. at Woodend Auditorium, 838 Mineral Springs Road, Ancaster, Ontario.

**16. ADJOURNMENT**

On motion, the meeting adjourned.



*Wellington County Municipal Economic Development Group*

Minutes  
WWCFDC Boardroom, Elora,  
September 10, 2013  
9:30 a.m.

**Present:**

John Brennan (Town of Erin), George Bridge (Mayor, Town of Minto), Brad Dixon (GRCA), Crystal Ellis (Mapleton Township), Alex Goss (LIP), Gerry Horst (OMAFRA), Mandy Jones (Town of Minto), Karen Landry (Township of Puslinch), Andy Lennox (WFA), April Marshall (Township of Wellington North), Carolyn O'Donnell (County of Wellington), Andrea Ravensdale (County of Wellington), Doug Reddick (MEDI), Jana Reichert (County of Wellington), Patricia Rutter (Township of Centre Wellington), Jane Shaw (WWCFDC), Janice Sheppard (Township of Guelph/Eramosa), Carol Simpson (WFPB), Patty Sinnamon (Township of Mapleton), Dale Small (Township of Wellington North), Scott Williams (GBEC),

**Regrets:**

Rose Austin (Saugeen Economic Development), Kathryn Ironmonger (CAO, Town of Erin), Don McKay (Councillor, County of Wellington), Chris White (Warden, County of Wellington), Scott Wilson (County of Wellington)

**Others Present:**

Genny Smith (Guelph/Eramosa & Puslinch BR&E Coordinator), Mary Vennemem (Town of Erin)

**1. Approval of Agenda**

Motion to approve agenda as written.

**Moved by Jana Reichert, seconded by John Brennan.**

**Carried**

**2. Declaration of Pecuniary Interest**

None declared.

**3. Approval of Minutes**

Motion to approve the minutes from the meeting held August 6, 2013, as written.

**Moved by Dale Small, seconded by John Brennan.**

**Carried**

#### **4. Implementation Plan Update**

##### **BR&E**

The base survey is currently being edited and therefore the survey packages will be delivered soon. The pre-interview letters will be distributed by mid-September. WFA have hired a program coordinator and will be conducting interviews to provide additional information for the agriculture sector. Each member will have access to the agriculture sector interview questions and the data entry will consist of both agriculture and county projects. Each municipality will have 10 interviews for each sector (agriculture, manufacturing, creative economy and health care) plus there will be 14 newcomer interviews, 20 downtown interviews from Minto and Guelph/Eramosa, 10 transportation interviews from Puslinch and the WFA interviews. All interviews will be conducted between the months of September and November.

#### **5. Roundtable/Other Business**

##### **Centre Wellington**

- No update

##### **County**

- If you require assistance to make documentation accessible for your municipality, please contact Andrea Ravensdale.
- Jana presented to Standard and Poor's and provided a supplementary socio economic report on Wellington. A few weeks later we received notice that Wellington's credit rating outlook increased from AA stable to AA positive!
- September 19<sup>th</sup> is the RTO 4 Trails of Tourism Summit.
- There will be a Safe Communities meeting on September 19<sup>th</sup> to discuss programming.
- A Fundraising dinner for the Wellington County Sustainable Agriculture (WCSA) will be held on September 20<sup>th</sup> at the Elora Legion.
- The Taste Real Field Dinner will be held September 22<sup>nd</sup>.

##### **GBEC**

- The Self Employed Benefit (SEB) Program is ongoing plus new programs being offered.
- A new Youth Starter Program which includes mentor training and funds to start a business is scheduled to begin in the fall.

##### **Guelph/Eramosa**

- On Wednesday, September 11<sup>th</sup> the township will be launching the new Community Guide.

##### **GRCA**

- Parks are open until October 15<sup>th</sup>.

##### **Erin**

- September 22<sup>nd</sup> is the annual carrot festival.
- The Farmers Market has been successful and will be closing at the end of September.
- Thanksgiving Weekend will be the 163<sup>rd</sup> Erin Fall Fair.

## **LIP**

- Looking to promote businesses across the City of Guelph and the County of Wellington. If you have any new businesses in your area please contact Alex.

## **MAPLETON**

- Currently working with two local businesses on expanding.
- Working with engineers to determine if a new water tower will be installed.
- Working with ministry on waste water capacity.
- Working in Rural Wellington will be held October 30<sup>th</sup> at the PMD Arena in Drayton.
- On September 21<sup>st</sup> from 9am - 4pm the 2013 Harvest Festival will take place at the Drayton Agricultural Fairgrounds.

## **MEDI**

- MSW Plastics received funds from the SOCFDC program
- Linamar received a grant of \$1.5 million
- In the next 3 years 1325 new jobs will be available in South Western Ontario.
- Doug is looking for success stories for small-medium sized organizations accessible for employees with disabilities. Stories that show how businesses in the area have implemented procedures to make a business accessible.

## **Minto**

- Rural Creative Summit deadline is September 13<sup>th</sup>.
- Cultural Days this year will include – “Ghosts of Many Pasts” on the Friday evening and “Investigations of the Old Town Hall”
- Minto bus tour will be held on Saturday, September 14<sup>th</sup>.
- Harriston-Minto Fall Fair is September 13<sup>th</sup> – 15<sup>th</sup>.
- Mayors’ Charity Golf Tournament was a success and raised \$9000.

## **OMAFRA**

- Applications are being accepted for Growing Forward 2 until October 24<sup>th</sup>. The program is a 5 year Federal Provincial Partnership agreements
- Rural Economic Development (RED) Fund will begin accepting applications at the end of October 2013.
- Outdoor Farm Show and IPM take place in September
- Premier Kathleen Wynne visited the St. Jacobs Market

## **Puslinch**

- Aberfoyle Fall Fair was held the weekend of September 6<sup>th</sup>.

## **Wellington North**

- The Grand Opening for the Arthur Walking Trail will be held September 14<sup>th</sup>.
- Wellington North has announced the new CAO will be past treasurer and acting CAO, Michael Givens.
- Minto, Centre Wellington and Wellington North have joined to pass a “not a willing host” resolution regarding wind turbine development.
- The township is in the final stages of the cultural draft
- June may be recognized as “National Butter Tart” month.



**WPBWWD**

- Received approval from OMAFRA for a 3 year grant which will start October 1<sup>st</sup>.
- Unemployment rate in Guelph is higher than Waterloo due to business owners looking to hire, no matter the individuals qualifications whereas Waterloo is looking to hire qualified individuals.

**Next meeting will be held October 1<sup>st</sup>, 2013 in the WWCFDC Boardroom at 9:30am.**

Meeting adjourned.

Moved by Patty Sinnamon

---

George Bridge, Chair

---

Jane Shaw, Recording Secretary