

Township of Puslinch & BDT GREENROADS Project Announcement

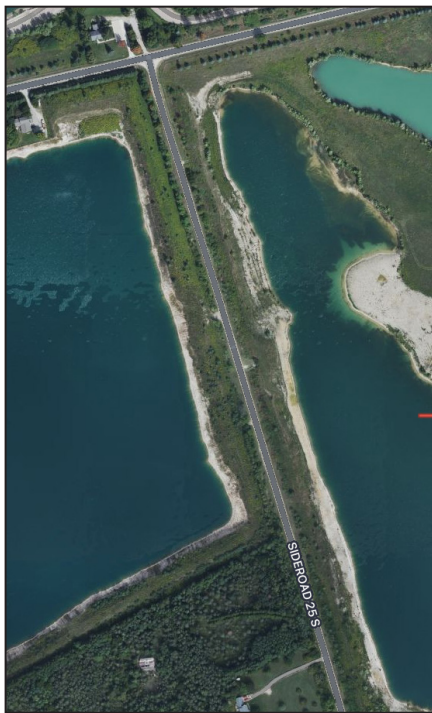
The Township of Puslinch, in collaboration with Biodiffusion Technologies Inc (BDT) and Dufferin Construction, a CRH Company, will be executing a road surface stabilization project along one kilometer on Side Road 25 starting at Concession Rd. 2. As part of this project, Dufferin Construction will create a variety of driving surfaces commonly used by Townships and Municipalities in Ontario. The purpose of this project is to demonstrate the economic value, superior performance, and environmental benefits of building GREENROADS with an all-natural bioresin.

BDT is a Canadian company, located in Cambridge ON, which produces a 100% environmentally safe, plant-based bioresin developed as a natural binder to stabilize and strengthen both driving surfaces and the base material below using existing surface material, recycled aggregate, reclaimed asphalt, or a combination of one or more of these materials. Because this product works so well with recycled road construction materials, it can help municipalities and townships extend their budgets, build stronger and more resilient roads, and source sustainable solutions to reduce reliance on newly mined materials such as asphalt or aggregate.

The timeline of this project is expected to run between Wednesday September 27th and Wednesday Oct 4th. The timing of the project will be dependant on weather. The section of road under construction will remain open to school buses and emergency service vehicles but will be closed to all other traffic.

To ensure the construction of safe and durable driving surfaces, the team working on the project has extensive experience designing projects, working with new materials, and building roads in Canada. The project was designed by Dave Hein, a road construction engineer. The construction work will be completed by Dufferin Construction, one of Canada's leading road contractors.

Dufferin Construction will build four 250m long sections of road using BDT's bioresin and industry-standard aggregate materials. Section one will be constructed with hot mix asphalt using 50 percent recycled asphalt and the BDT bioresin as an additive. Section two will be built using a specialized plant mix design of BDT bioresin and 100 percent recycled asphalt and applied using a 'cold in place' construction process. Section three will use a mix of BDT bioresin and 100 percent recycled asphalt using an in-situ sprayed application process, and section four will use the BDT bioresin in combination with existing road aggregate to build a stabilized hard surface.



Puslinch Side Road 25



View looking south from the intersection of Concession 2 & Side Road 25



For more information please contact:

*Mike Fowler Director of Public Works, Parks and Facilities
Township of Puslinch, 7404 Wellington Rd 34, Puslinch ON NOB 2J0
phone: 519 763-1226 ext 220
email: mfowler@puslinch.ca*