

N3	ANS	Hwy 6 North To Be Closed	W3	AWS	Closed Tonight
		Hwy 401 - Midblock Interchange			or
		Starts XXX YY			Open Tonight
					Follow D-3
					or
N4	ANS	Hwy 6 North To Be Closed	W4	AWS	Closed Tonight
		Midblock Interchange - Hwy 401			or
		Starts XXX YY			Open Tonight
					Follow D-4
					or

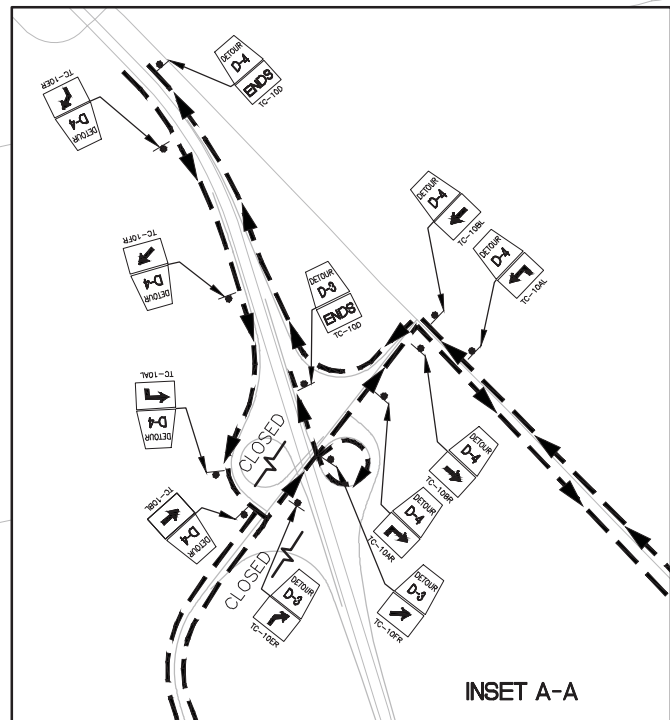
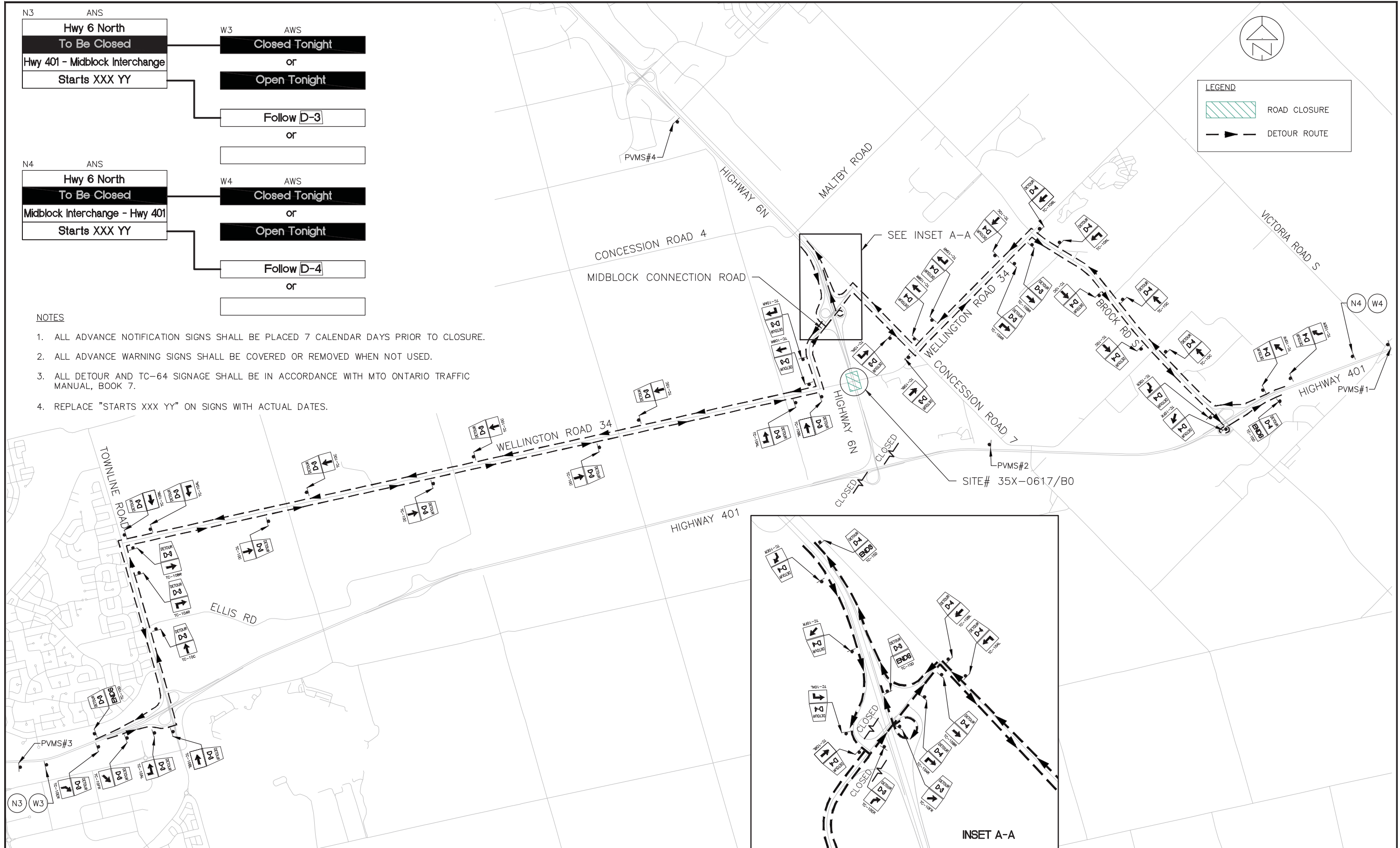
NOTES

1. ALL ADVANCE NOTIFICATION SIGNS SHALL BE PLACED 7 CALENDAR DAYS PRIOR TO CLOSURE.
2. ALL ADVANCE WARNING SIGNS SHALL BE COVERED OR REMOVED WHEN NOT USED.
3. ALL DETOUR AND TC-64 SIGNAGE SHALL BE IN ACCORDANCE WITH MTO ONTARIO TRAFFIC MANUAL, BOOK 7.
4. REPLACE "STARTS XXX YY" ON SIGNS WITH ACTUAL DATES.

LEGEND

ROAD CLOSURE

DETOUR ROUTE

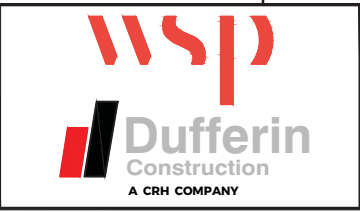


0	23/10/20	ISSUED FOR CONSTRUCTION	OR	DC	OR	MM
NO.	DATE	REVISIONS	BY	CHK	LEAD	PROJ. MAN.

SCALE :
N.T.S.



DESIGNED	O. RAHMAN	OR	23/10/20
DRAWN	B. McCANDLESS	BM	23/10/20
CHECKED	D. CAMPBELL	DC	23/10/20
APPROVED LEAD ENGR.	O. RAHMAN	OR	23/10/20
APPROVED PROJ. MANAGER	M. MACH	MM	23/10/20
NAME (PRINT)	INIT.	DATE	



TITLE							
HIGHWAY 6 HANLON EXPRESSWAY							
DETOUR ROUTE							
HWY 6 FULL CLOSURE AT							
AT WELLINGTON RD 34							
PROJECT NO.	SUBMISSION	DISCIPLINE	STRUCTURE NUMBER	DESIGN ELEMENT	DOCUMENT TYPE	DRAWING NUMBER	REVISION NUMBER
H6D	IFC	HWY	000	STG	DWG	143	0