

Township of Puslinch Election By-law Sign Guide

In accordance with Township of Puslinch By-law 2025-038



TOWNSHIP OF

PUSLINCH

EST. 1850

Contact Us

Township of Puslinch
7404 Wellington RD 34,
Puslinch, ON, NOB 2J0

T. 519-763-1226
E. admin@puslinch.ca

 [Puslinch.ca](https://puslinch.ca)

 [@TownshipofPuslinch](https://www.facebook.com/TownshipofPuslinch)

 [@TwpPuslinchON](https://twitter.com/TwpPuslinchON)

 [@townshipofpuslinch](https://www.instagram.com/townshipofpuslinch)

Regular Office Hours

Monday-Friday
9:00 a.m. to 4:30 p.m.

Saturday and Sunday
Closed

Summer Office Hours

(July 2nd-August 31st)

Monday-Friday
8:30 a.m. to 4:00 p.m.

Saturday and Sunday
Closed

Table of Contents

What is an Election Sign	3
Who must Follow this By-law	
When can Election Signs be Placed	
Where can Election Signs be Placed	4
Sign Locations	
Spacing Between Signs	
Where are Election Signs Not Permitted	5
Election Sign Requirements	
What must be on the Sign?	6
Removal of Election Signs	
Enforcement	



Election Signs - Quick Guide

What is an Election Sign?

Section 2.0

Any sign that promotes, supports, opposes or shares a message about something related to an election.

This includes:

- A candidate or political party
- An issue connected to a candidate or party
- A question, law or by-law that voters are being asked to decide on



Who Must Follow this By-law?

Section 3.1

The requirements of the by-law apply to:

- Anyone who places, installs, or displays an election sign
- Candidates and third parties
- Property owners allowing elections signs to be posted on their property

When Can Election Signs be Placed?

Section 3.4

Municipal Elections

- No earlier than the day that the Candidate has been nominated or registered and no earlier than 45 days prior to Election Day

Federal and Provincial Elections

- No earlier than the election is officially called (writ issued)

For the 2026 Municipal Election, this date is September 11, 2026.

Election Signs - Quick Guide

Where Can Election Signs be Placed?

Private Property (Section 3.6)



- Must have permission from the property owner or tenant
- There is a maximum of 1 sign per candidate per property or 1 per unit per candidate for multi-unit properties and placed 1 metre from each other
- Signs must be at least 1 metre from the property line or street

Highways and Boulevards (Section 3.7)



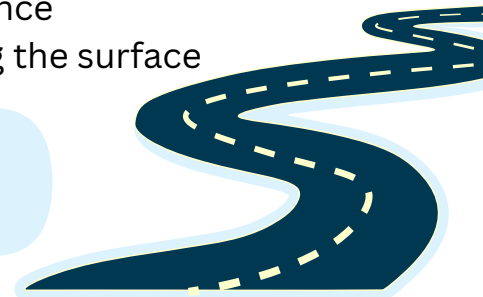
- Election signs may be placed on highways and boulevards so long as they:
 - Do not block pedestrians or vehicles
 - Do not interfere with snow removal or maintenance
 - Are not installed by digging, drilling, or damaging the surface

Spacing Between Signs

Section 3.7

When placing election signs on highways:

- **Residential areas:** Minimum 10 metres apart (same candidate/ third party)
- **Commercial/industrial areas:** Minimum 50 metres apart (same candidate/third party)



Election Signs - Quick Guide

Where are Election Signs Not Allowed?

General Restrictions (Section 3.5)



- Election signs are not allowed where they create a safety hazard or where they block:
 - Traffic visibility
 - Sidewalks
 - Emergency access (hydrants, exits etc.)



Public Property (Section 3.9)

- Election signs are not permitted on public property



Structures and Objects (Section 3.5.4)

- Election signs are not allowed to be attached to trees, utility polls (hydro, telephone, light standard), fences or infrastructure



Roadways and Traffic Areas (Section 3.7)

- Election signs are not allowed on the roadway, on medians or roundabouts, or on highway structures



Near Voting Locations (Section 3.8)

- No election signs are allowed within 100 metres of a voting place on voting days with the exception of a residential private property

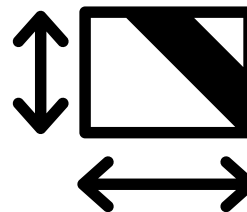
Election Sign Requirements

Section 3.2

- All election signs must be in good condition and not create a safety hazard
- Election signs must not:
 - Be illuminated
 - Move, swing, or rotate
 - Be a roof sign, inflatable sign, or banner sign

Size Limits

- Maximum area: 1.5 metres²
- Maximum height: 2.0 metres



Election Signs - Quick Guide

What Must be on the Sign?

Section 3.3

- All election signs must clearly identify who is responsible for the sign
- Third Party Signs must also include:
 - The name of the registered third party
 - The municipality where the third party is registered
 - Contact information (phone number, email address, or mailing address)

Signs must not:

- Include the Township logo, election logo, crest or seal
- Be obscene, defamatory or discriminatory

For the 2026 Municipal Election, this date is October 29, 2026.

Removal of Election Signs

Section 3.10

- All election signs must be removed within 72 hours (3 days) after Election Day
- Campaign office signs must be removed within 1 week following Election Day
- The Township may remove signs without notice if they are unsafe or non-compliant, recover removal costs from the sign owner, and dispose of removed signs

For more information, questions, or clarification on election sign rules, including key dates for upcoming municipal, provincial, or federal elections, contact the Corporate Services Department at admin@puslinch.ca.

