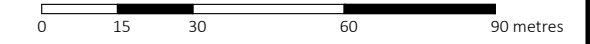


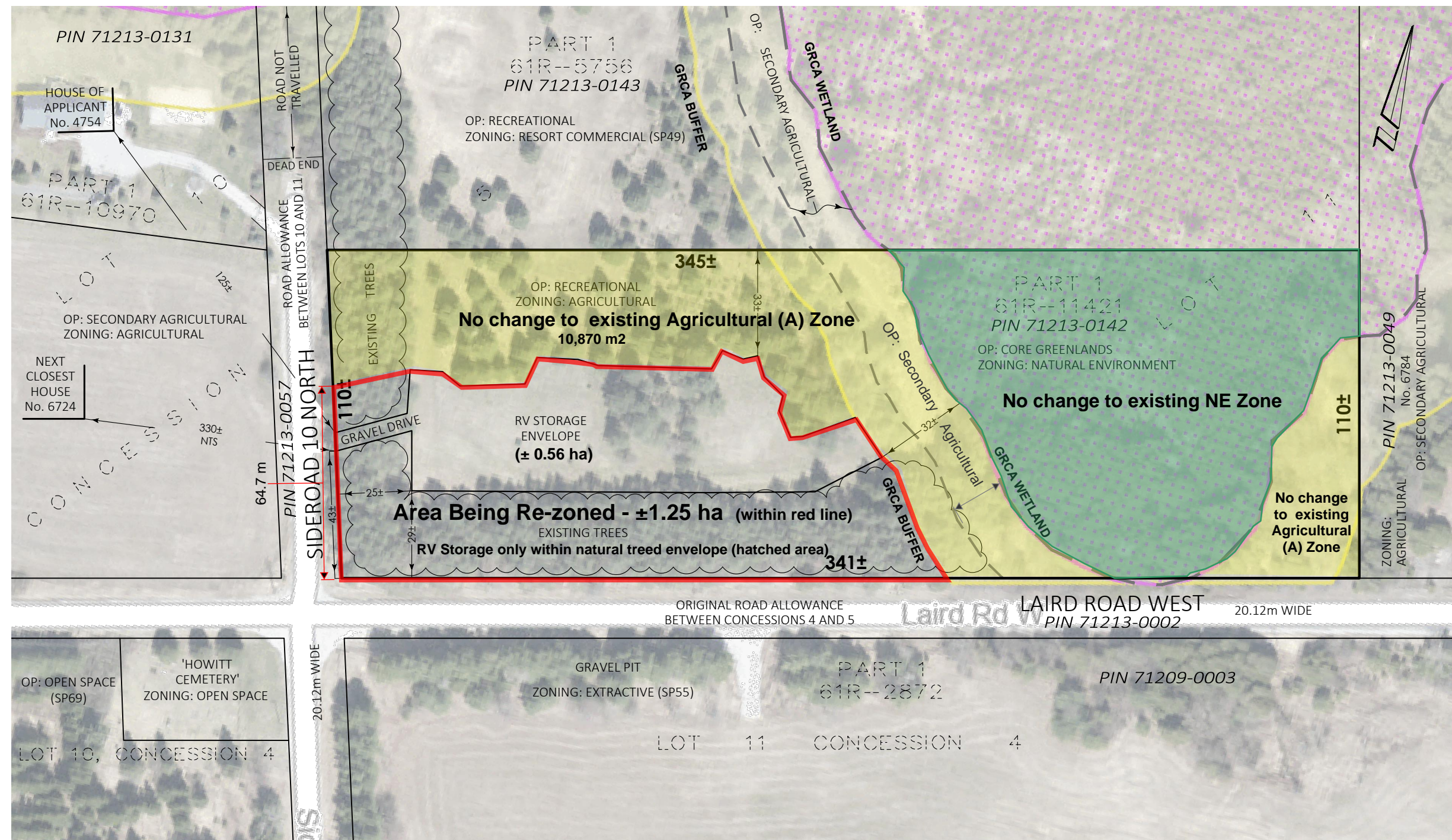
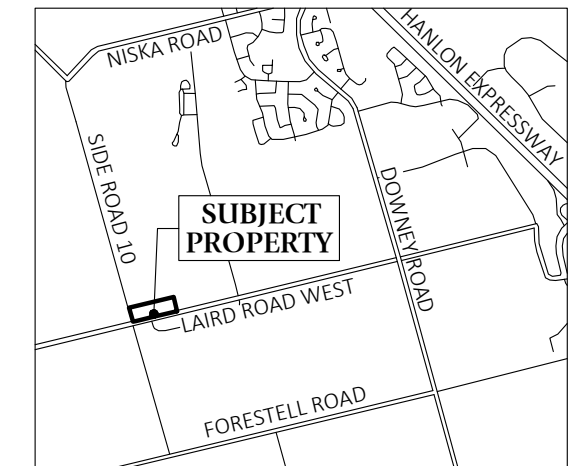
**ILLUSTRATIVE SKETCH  
FOR ZONE CHANGE  
PART OF LOT 11, CONCESSION 5  
TOWNSHIP OF PUSLINCH  
COUNTY OF WELLINGTON**

SCALE 1 : 1500



VAN HARTEN SURVEYING INC.

KEYMAP:



**NOTES:**

1. **THIS IS NOT A PLAN OF SURVEY AND SHOULD NOT BE USED FOR REAL ESTATE TRANSFERS OR MORTGAGES.**
2. FOR THE PURPOSE OF THIS APPLICATION, THE SUBJECT LANDS ARE ZONED AGRICULTURAL AND HAVE AN OFFICIAL PLAN DESIGNATION OF RECREATIONAL AREAS.
3. DISTANCES ON THIS PLAN ARE SHOWN IN METRES AND CAN BE CONVERTED TO FEET BY DIVIDING BY 0.3048.
4. DIMENSIONS ON THIS SKETCH ARE APPROXIMATE AND HAVE NOT BEEN VERIFIED BY SURVEY.
5. N.T.S. DENOTES NOT TO SCALE

**NOTES:**

STORAGE - TRAVEL TRAILERS, RV'S, CARGO TRAILERS, UTILITY TRAILERS & BOATS

FIRE ACCESS- FENCED SITE / LOCKED WITH A PADLOCK. PADLOCK CAN BE CUT EASILY WITH BOLT CUTTERS BY PFD. GATE IS ACCESSIBLE FROM SR10 WITH AMPLE ROOM FOR STAGING FIRE TRUCKS OFF THE MAIN ROAD (LAIRD ROAD). ENTRANCE HAS WIDTH WITH TREES TRIMMED UP TO 6 METERS FOR FIRE TRUCK ACCESS AND CLEARANCE. LANEWAY INTO THE SITE AND OPEN AREA IS LESS THAN 30 METERS IN LENGTH AND STRAIGHT.

**EMERGENCY RESPONSE PLAN**

- RV'S SCREENED FOR LEAKS/ISSUES BEFORE THEY ARE ALLOWED ENTRY
- NO REPAIRS PERMITTED ON SITE
- RV'S REQUIRED TO EMPTY TANKS OFF SITE BEFORE STORAGE
- NO DUMP FACILITIES OR GARBAGE ON SITE
- CURRENT PUSLINCH FIREFIGHTER / TRAINED WITH SPILL CONTAINMENT.
- HAZMAT LEVEL 1 & 2 TRAINING THOUGH PUSLINCH FIRE AND RESCUE
- FIRE PLAN INCLUDING EXITS AND TWO PALLETS OF WATER STORED ON SITE
- TRACTOR AND OTHER EQUIPMENT ON HAND (OWNER RESIDES NEXT DOOR)
- SITE IS FULLY FENCED, LOCKED AND SECURE.
- MULTIPLE MOTION LIGHTS & CAMERAS ARE INSTALLED THROUGHOUT THE SITE.

**WINTER MAINTENANCE PLAN**

- LARGE TRACTOR WITH HYDRAULIC SNOWBLOWER AVAILABLE
- ACCESS LANE AND STORAGE AREA PERIMETER ARE CLEARED OF SNOW
- SITE IS CLOSED FROM NOV 1- APRIL 30 (NO ACCESS)
- MOST RV'S ARE LEFT FOR THE OFF SEASON ON SITE WITH NO ACCESS.
- STORAGE AREA WELL REMOVED FROM GCRA RESTRICTED AREAS
- SITE HAS OPERATED WITHOUT ISSUE FOR OVER 5 YEARS
- NO ADDITIONAL CLEARING OR ON SITE WORKS REQUIRED

**SURVEYOR'S CERTIFICATE:**  
THIS SKETCH WAS PREPARED  
ON THE 23rd DAY OF MARCH, 2026

**JEFFREY E. BUISMAN**  
ONTARIO LAND SURVEYOR



Kitchener/Waterloo Ph: 519-742-8371	Guelph Ph: 519-821-2763	Orangeville Ph: 519-940-4110
www.vanharten.com		info@vanharten.com
DRAWN BY: TJH	CHECKED BY: JB	PROJECT No. 33816-24
Mar 24, 2026-3:07:29 PM G:\PUSLINCH\Con5\ACAD\SK ZC LOT11 BARDWELL (33816-24) UTM 2010.dwg		
© 2025 THIS SKETCH IS PROTECTED BY COPYRIGHT		